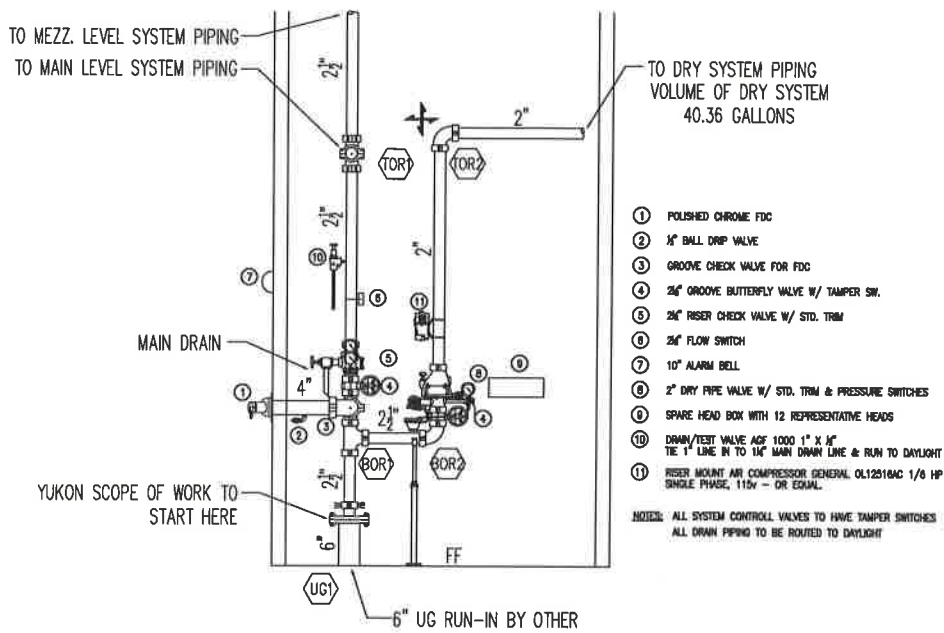



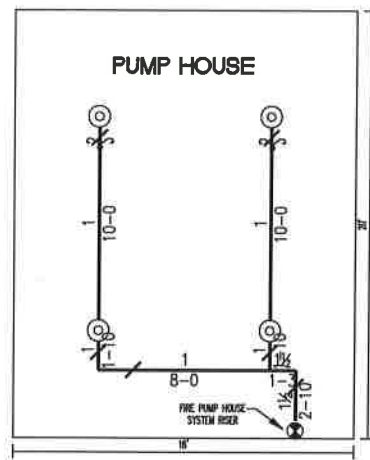
JUNE 25, 2024
UPPER TANANA HEALTH CENTER

SYSTEM AREA
17,299 SF



SYSTEM RISER DETAIL

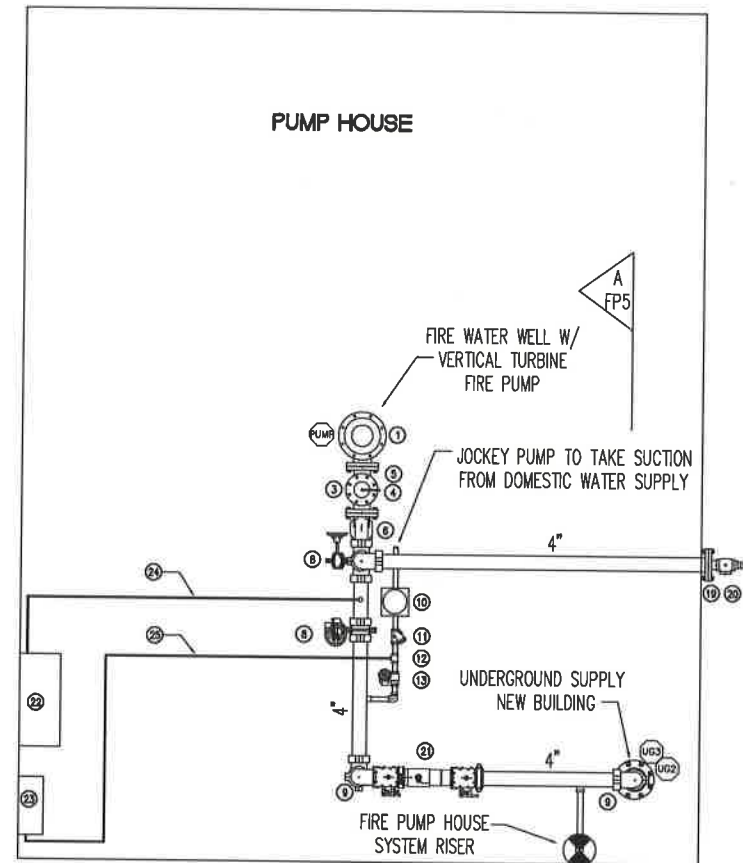
SCALE: $1/2" = 1'-0"$ 



PUMP HOUSE FIRE PROTECTION PLAN

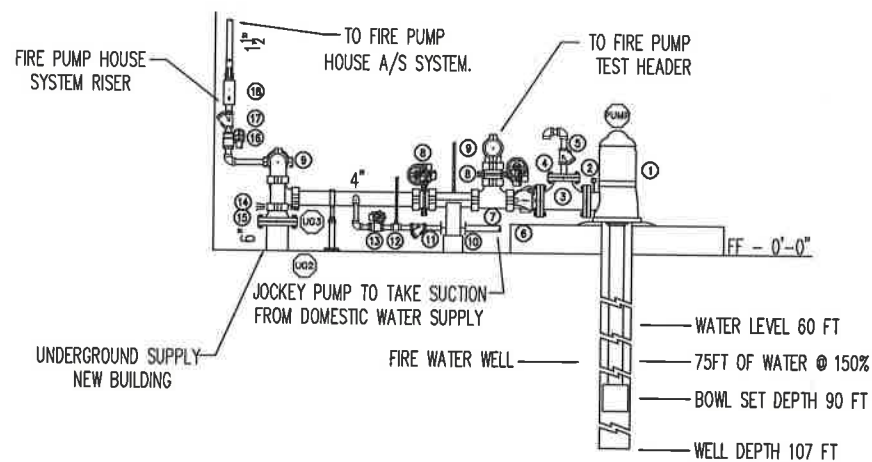
SCALE: $1/4" = 1'-0"$

Sprinkler Head Schedule					
Symbol	Count	Thread	K-Factor	Description	Note
⊙	4	1/2"	5.8	TY3131 1/2 QR 200 B UP	
4 = Total Number of Heads This Floor					



FIRE PUMP PLAN VIEW

SCALE: $1/2" = 1'-0"$

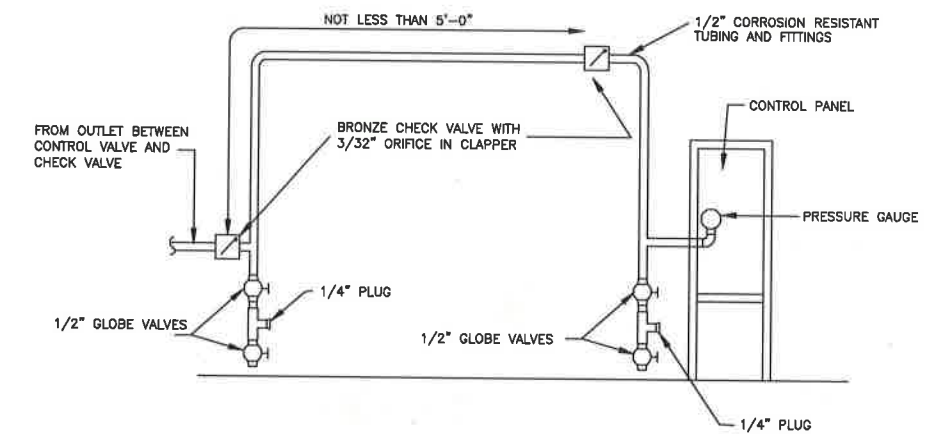


FIRE PUMP SECTION VIEW "A"

SCALE: $1/2" = 1'-0"$

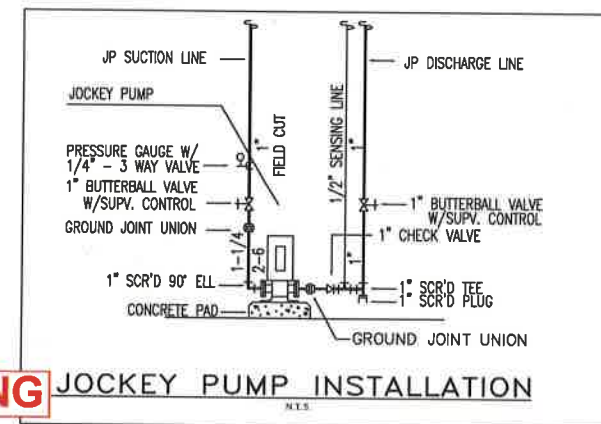
FIRE PUMP LEGEND

- ① 250 CFM @ 140 PSI VERTICAL TURBINE FIRE PUMP
- ② 30 PSI, 208V 3 PHASE.
- ③ PUMP DISCHARGE PRESSURE GAUGE
- ④ 4" FLANGE TEE
- ⑤ 8" X 1.5" COMPANION FLANGE
- ⑥ AUTOMATIC AIR RELEASE VALVE
- ⑦ 4" GROOVE CHECK VALVE
- ⑧ 4" GROOVE TEE
- ⑨ 4" GROOVE BUTTERFLY VALVE W/ TAMPER SWITCH
- ⑩ 4" GROOVE ELL
- ⑪ JOCKEY PUMP -- 1.5 HP, 208V 3 PHASE
- ⑫ 1" THIRD CHECK VALVE
- ⑬ 1 X 1" X 1/2" TEE FOR SENSING LINE
- ⑭ 1" THREADED BUTTERBALL VALVE
- ⑮ 8" X 4" GROOVE CONCENTRIC REDUCER
- ⑯ 8" GROOVE FLANGE
- ⑰ 1 1/2" THREADED BUTTERBALL VALVE W TAMPER SWITCH
- ⑱ 1 1/2" THREADED CHECK VALVE
- ⑲ 1 1/2" THREADED RISER MANIFOLD
- ⑳ 8" X 2.5" COMPANION FLANGE
- ㉑ 2 1/2" ANGLE HOSE VALVE
- ㉒ 4" DEFENDER DOWN GGD W/ TAMPER SWITCH
- ㉓ FIRE PUMP CONTROL PANEL
- ㉔ JOCKEY PUMP CONTROL PANEL
- ㉕ FIRE PUMP SENSING LINE
- ㉖ JOCKEY PUMP SENSING LINE



FIRE/JOCKEY PUMP SENSING LINE DETAIL

SCALE: N.T.S.



YUKON
FIRE PROTECTION SERVICES
INCORPORATED

5601 SILVERADO WAY
ANCHORAGE, ALASKA 99518-1215
(907) 563-3808 FAX: 561-2352

ALL INFORMATION ON THIS DRAWING IS THE PROPERTY OF YUKON FIRE PROTECTION. THIS DRAWING IS RECEIVED IN CONFIDENCE THAT ITS CONTENTS MAY NOT BE DISCLOSED WITHOUT THE PRIOR WRITTEN CONSENT OF YUKON FIRE PROTECTION. YUKON FIRE PROTECTION MAKES NO WARRANTIES AS TO THE ACCURACY OR COMPLETENESS OF THE INFORMATION AND DISCLAIMS ANY LIABILITIES REGARDING ITS USE. EXCEPT THOSE SET FORTH IN THE STANDARD TERMS AND CONDITIONS OF THE SALE FOR THIS PRODUCT AND IN NO CASE SHALL YUKON FIRE PROTECTION BE LIABLE FOR ANY INCIDENTAL OR CONSEQUENTIAL DAMAGES ARISING FROM THE SALE, RESALE, USE OR MISUSE OF THE PRODUCT.

[illegible]

DESIGNED BY	N. STEPHENS
DESIGNER	SEAN J GUILLORY, CET. LISC. NO. 04-037
CHECKED BY	SEAN J GUILLORY, CET. LISC. NO.04-037
PROJECT MANAGER	LISC. NO.

UPPER TANANA HEALTH CLINIC
TOK, ALASKA

FIRE PUMP/ RISER DETAIL PLAN

DATE: 1/15/20

JOB #

M-77

FP-5

5 SHEET 5
OF