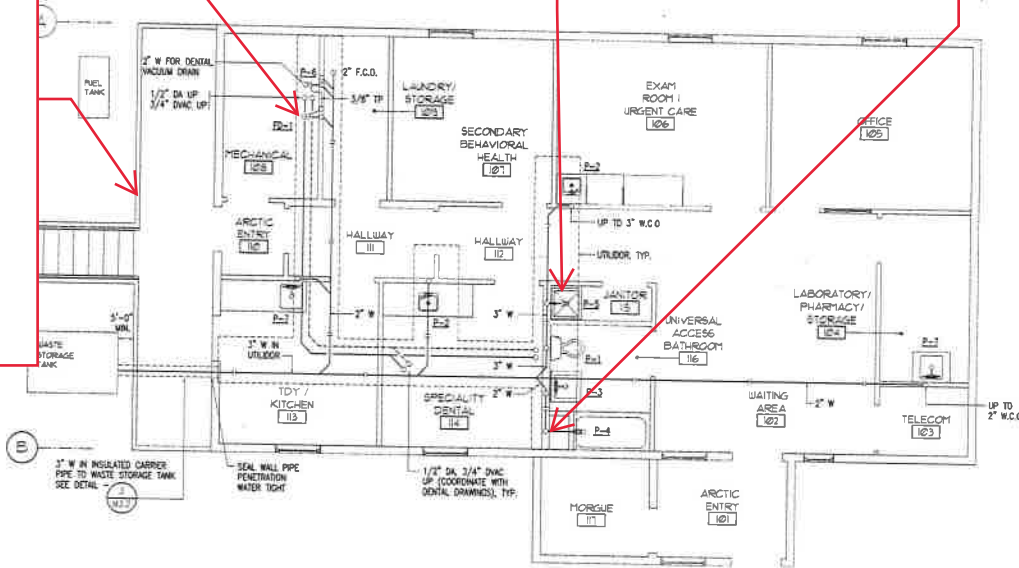


Location of
ice shown in
the
attachment
Hughes
Freeze
Damage 2

Suspect
broken trap

Suspect
broken trap

suspect
broken trap



1 UNDERFLOOR PLAN - GRAVITY SEWER SYSTEM
U2.2 SCALE: 1/4"=1'-0"

Oct 10, 2005 - 2:13pm - 2005\K3229\K3229-M2-1.dwg

RSA Engineering, Inc.
MECHANICAL AND ELECTRICAL CONSULTING ENGINEERS
322 ARCTIC BLVD., SUITE 200 • ANCHORAGE, AK 99503-2510 • (907) 561-0024

HEALTH CLINIC - HUGHES, ALASKA

5,500 SF CLINIC

1,500 SF CLINIC

FILE NAME:

FILE NAME:
LAYOUT NAME:

PROJ ENG:



LCMF LLC
132 2nd St. • Arlington, MA 02134 • (617) 477-1888

**ALASKA NATIVE
TRIBAL HEALTH CONSORTIUM**
1801 SOUTH BRADLEY STREET, SUITE 200
ANCHORAGE, ALASKA 99503-3440
PH: 214-278-8200

(601) 729-2529

[illegible]
