



1026 E 7TH AVENUE
ANCHORAGE, ALASKA 99501
TEL: 907/285-7722
FACSIMILE: 907/215-8779

Consultant:

FRANKLIN & ASSOCIATES
STRUCTURAL ENGINEERS
MECHANICAL & ELECTRICAL ENGINEERS
1015 W 25TH AVENUE, ANCHORAGE, ALASKA 99503



Project Name:

GALENA CENTER

GALENA, ALASKA

Project Phase: *Struct*

IN-PROGRESS
CONSTRUCTION
DRAWINGS

Project No. 0001
Drawing File: 0001-01
Date: 01/15/01
Drawn By: [Signature]
Checked By: [Signature]
Reviewed By: [Signature]

Drawing Name:

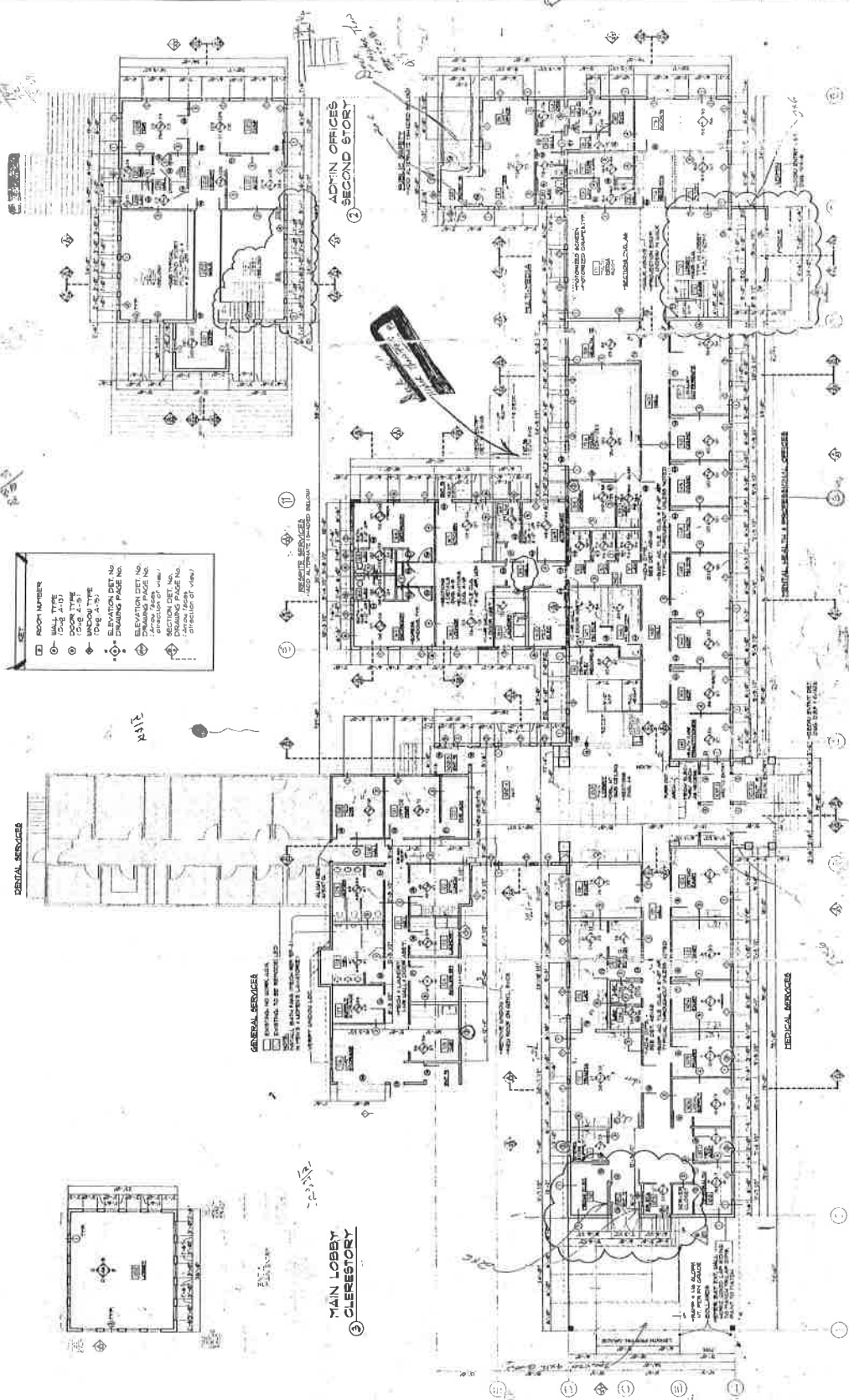
PLAN
UNSCALED

SEE LIST SCHEDULES, PLANS 414, 420
SHEET NUMBER

A-1

2 OF 18

26 PLAN
TYPE: 26T-11.0
ENTER DIAG. NO.
CORR. DATA



KEY	
□	ROOM NUMBER
—	WALL TYPE
⊕	DOOR TYPE
⊙	DOOR TYPE (SGL. 2-1)
⊙	DOOR TYPE (DGL. A-1)
⊙	ELEVATION DET. NO. DRAWING PAGE NO.
⊙	ELEVATION DET. NO. DRAWING PAGE NO.
⊙	ELEVATION DET. NO. DRAWING PAGE NO. (direction of view)
⊙	ELEVATION DET. NO. DRAWING PAGE NO. (direction of view)

Handwritten notes and annotations on the left side of the drawing, including:

- 17-00-1
- 17-00-2
- 17-00-3
- 17-00-4
- 17-00-5
- 17-00-6
- 17-00-7
- 17-00-8
- 17-00-9
- 17-00-10
- 17-00-11
- 17-00-12
- 17-00-13
- 17-00-14
- 17-00-15
- 17-00-16
- 17-00-17
- 17-00-18
- 17-00-19
- 17-00-20
- 17-00-21
- 17-00-22
- 17-00-23
- 17-00-24
- 17-00-25
- 17-00-26
- 17-00-27
- 17-00-28
- 17-00-29
- 17-00-30
- 17-00-31
- 17-00-32
- 17-00-33
- 17-00-34
- 17-00-35
- 17-00-36
- 17-00-37
- 17-00-38
- 17-00-39
- 17-00-40
- 17-00-41
- 17-00-42
- 17-00-43
- 17-00-44
- 17-00-45
- 17-00-46
- 17-00-47
- 17-00-48
- 17-00-49
- 17-00-50



KARLUK DESIGN INCORPORATED
 1042 E. 57th Avenue
 Anchorage, Alaska 99501
 TEL: 907.268.7220
 FACSIMILE: 907.276.6879

Consultant:
FRANKLIN & ASSOCIATES
 CONSULTANTS, INC. (F&A)
 1015 CONVENT DRIVE, SUITE 100
 ANCHORAGE, ALASKA 99501
 TEL: 907.268.7220



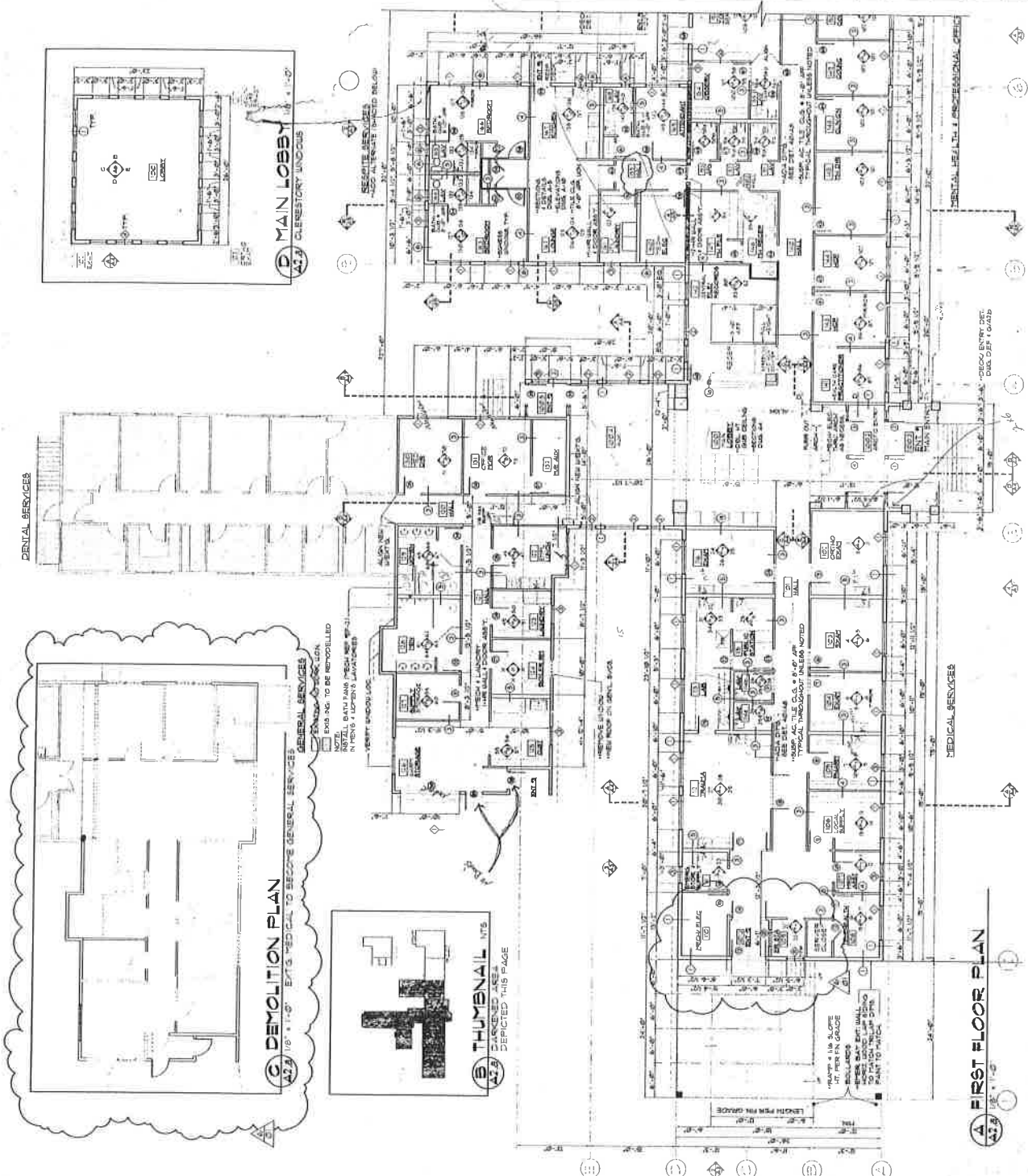
Project Name:
GALENA CENTER
 GALENA, ALASKA

Project Phase/Status:
IN-PROGRESS CONSTRUCTION DRAWINGS

Project No.: 9333
 Drawing File #: 9333/AA
 Date: 06-00
 Drawn By: M. J.
 Checked By: J.M.
 Revisors:

Drawing Name:
FLOOR PLAN
PARTIAL
FIRST FLOOR

Sheet Number:
A2.a
 3 OF 18



NOTES

1. CONTRACTOR SHALL PROVIDE WASTE CONTAINER FOR DEMOLITION DEBRIS.
2. DEMOLITION SHALL BE COMPLETED WITHIN 14 DAYS OF START DATE.
3. DEMO PLAN, REMOVED APPEAR AS DASHED LINE PLAN.
4. SALVAGE REPAIRS SHALL BE PERFORMED AS SHOWN.
5. VERIFY DOORS TO REMAIN IN SITU.

KEY

- ROOM NUMBER
- WALL TYPE
- DOOR TYPE (CUE A-37)
- WINDOW TYPE
- DOOR SWING (CW/CC)
- DRAWING SCALE (1/8" = 1'-0")
- DRAWING PAGE NO.
- SECTION REF. NO.
- DRAWING DATE
- DRAWING NAME
- DRAWING NUMBER
- DRAWING TITLE
- DRAWING DATE
- DRAWING NAME
- DRAWING NUMBER
- DRAWING TITLE

DEMOLITION PLAN
 A2.a / 10' x 14' - 0" E.T.S. MEDICAL TO BECOME GENERAL SERVICES

THUMBNAILED AREA
 DEPICTED THIS PAGE

FIRST FLOOR PLAN
 A2.a / 10' x 14' - 0"

GENERAL SERVICES

DENTAL SERVICES

MEDICAL SERVICES

MAN LOBBY

CLERESTORY WINDOWS

REMOVE WINDOW

REPAIR WINDOW

REPLACE WINDOW

REMOVE WINDOW

REPAIR WINDOW

REPLACE WINDOW

REMOVE WINDOW

REPAIR WINDOW

REPLACE WINDOW

REMOVE WINDOW

REPAIR WINDOW

REPLACE WINDOW

REMOVE WINDOW

REPAIR WINDOW

REPLACE WINDOW

REMOVE WINDOW

REPAIR WINDOW

REPLACE WINDOW

REMOVE WINDOW

REPAIR WINDOW

REPLACE WINDOW

REMOVE WINDOW

REPAIR WINDOW

REPLACE WINDOW

REMOVE WINDOW

REPAIR WINDOW

REPLACE WINDOW

REMOVE WINDOW

REPAIR WINDOW

REPLACE WINDOW

REMOVE WINDOW

REPAIR WINDOW

REPLACE WINDOW

REMOVE WINDOW

REPAIR WINDOW

REPLACE WINDOW

REMOVE WINDOW

REPAIR WINDOW

REPLACE WINDOW

REMOVE WINDOW

REPAIR WINDOW

REPLACE WINDOW

REMOVE WINDOW

REPAIR WINDOW

REPLACE WINDOW

REMOVE WINDOW

REPAIR WINDOW

REPLACE WINDOW

REMOVE WINDOW

REPAIR WINDOW

REPLACE WINDOW

REMOVE WINDOW

REPAIR WINDOW

REPLACE WINDOW

REMOVE WINDOW

REPAIR WINDOW

REPLACE WINDOW

REMOVE WINDOW

REPAIR WINDOW

REPLACE WINDOW

REMOVE WINDOW

REPAIR WINDOW

REPLACE WINDOW

REMOVE WINDOW

REPAIR WINDOW

REPLACE WINDOW

REMOVE WINDOW

REPAIR WINDOW

REPLACE WINDOW

REMOVE WINDOW

REPAIR WINDOW

REPLACE WINDOW

REMOVE WINDOW

REPAIR WINDOW

REPLACE WINDOW

REMOVE WINDOW

REPAIR WINDOW

REPLACE WINDOW

REMOVE WINDOW

REPAIR WINDOW

REPLACE WINDOW

REMOVE WINDOW

REPAIR WINDOW

REPLACE WINDOW

REMOVE WINDOW

REPAIR WINDOW

REPLACE WINDOW

REMOVE WINDOW

REPAIR WINDOW

REPLACE WINDOW

REMOVE WINDOW

REPAIR WINDOW

REPLACE WINDOW

REMOVE WINDOW

REPAIR WINDOW

REPLACE WINDOW

REMOVE WINDOW

REPAIR WINDOW

REPLACE WINDOW

REMOVE WINDOW

REPAIR WINDOW

REPLACE WINDOW

REMOVE WINDOW

REPAIR WINDOW

REPLACE WINDOW

REMOVE WINDOW

REPAIR WINDOW

REPLACE WINDOW

REMOVE WINDOW

REPAIR WINDOW

REPLACE WINDOW

REMOVE WINDOW

REPAIR WINDOW

REPLACE WINDOW

REMOVE WINDOW

REPAIR WINDOW

REPLACE WINDOW

REMOVE WINDOW

REPAIR WINDOW

REPLACE WINDOW

REMOVE WINDOW

REPAIR WINDOW

REPLACE WINDOW

REMOVE WINDOW

REPAIR WINDOW

REPLACE WINDOW

REMOVE WINDOW

REPAIR WINDOW

REPLACE WINDOW

REMOVE WINDOW

REPAIR WINDOW

REPLACE WINDOW

REMOVE WINDOW

REPAIR WINDOW

REPLACE WINDOW

REMOVE WINDOW

REPAIR WINDOW

REPLACE WINDOW

REMOVE WINDOW

REPAIR WINDOW

REPLACE WINDOW

REMOVE WINDOW

REPAIR WINDOW

REPLACE WINDOW

REMOVE WINDOW

REPAIR WINDOW

REPLACE WINDOW



KARLUK DESIGN
INCORPORATED
1092 E. 6TH AVENUE
ANCHORAGE, ALASKA 99501
TEL 907.239.7722
FACSIMILE 907.276-0079

Consultant:

FRANKLIN & ASSOCIATES
ARCHITECTS
1000 W. 7th Avenue
MBA CONSULTING ENGINEERS
1000 W. 7th Avenue
ANCHORAGE, ALASKA 99501



Stamp

Project Name

GALENA CENTER
GALENA, ALASKA

Project Phase / Status

IN-PROGRESS
CONSTRUCTION
DRAWINGS

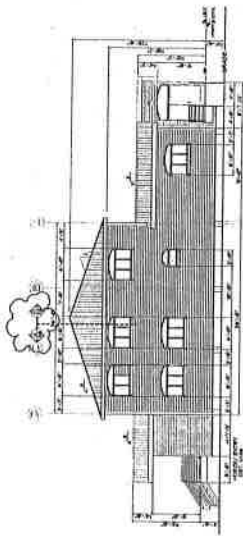
Project #: 9930
Drawing File #: 9930/A3
r. Date: 05-2001
Drawn By: [Signature]
Checked By: JK
Revisions: 6-2 REVISIONS
Drawing Name

BUILDING ELEVATIONS

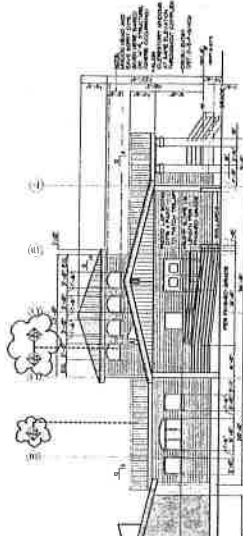
Sheet Number

A-3

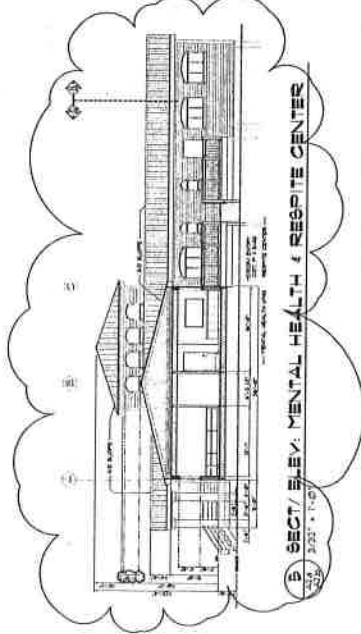
5 Of 18



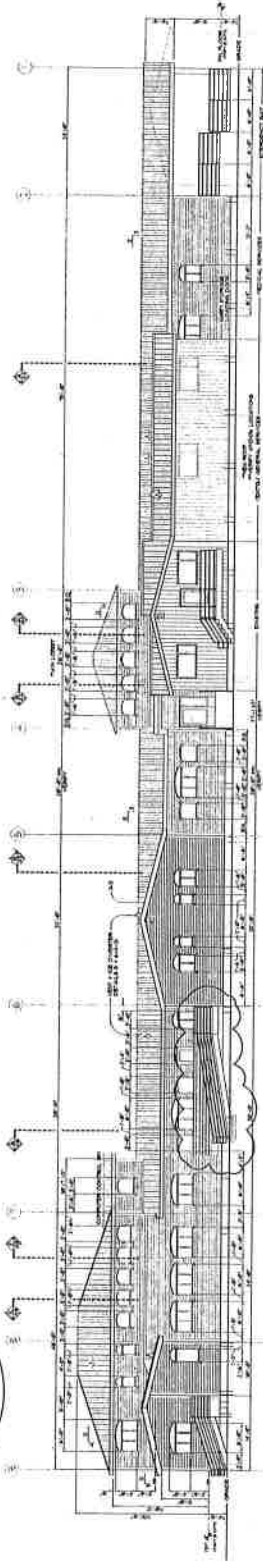
1 ELEV. ADMIN/ PUBLIC SAFETY OFFICES
AS30 3/32" = 1'-0"



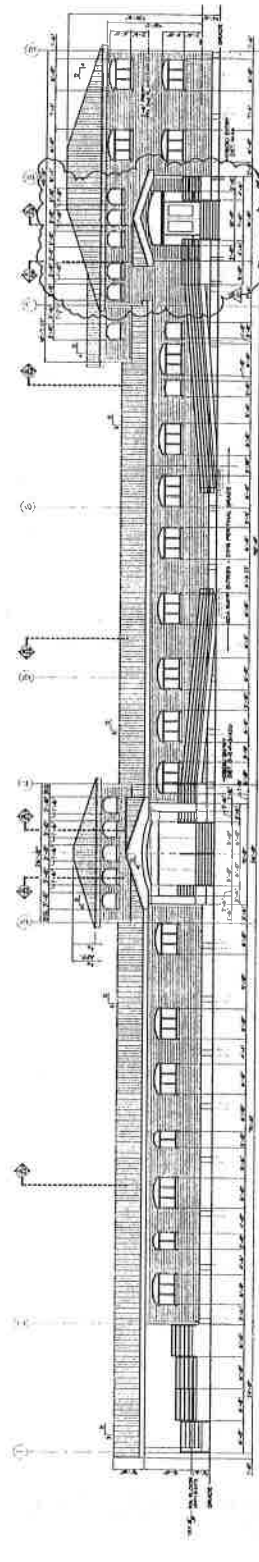
2 ELEV. EMERGENCY ENTRANCE
AS30 3/32" = 1'-0"



B SECT. ELEV. MENTAL HEALTH / RESPIRE CENTER
AS30 3/32" = 1'-0"



3 REAR ELEVATION
AS30 3/32" = 1'-0"



4 FRONT ELEVATION
AS30 3/32" = 1'-0"



KARLUK DESIGN
INCORPORATED
1042 E. 6TH AVENUE
ANCHORAGE, ALASKA 99501
TEL: 907.938-7129
FACSIMILE: 907.975-9879

Consultant:
FRANKLIN E. ASSOCIATES
STRUCTURAL, MECHANICAL,
ELECTRICAL & PLUMBING
ENGINEERS
1000 W. 11TH AVENUE
ANCHORAGE, ALASKA 99501



Project Name

GALENA CENTER
GALENA, ALASKA

Project Phase / Status

**IN-PROGRESS
CONSTRUCTION
DRAWINGS**

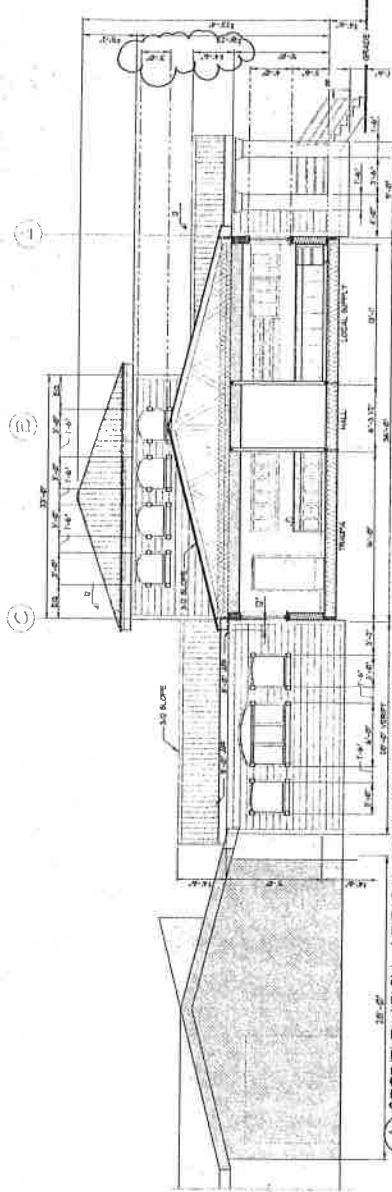
Project #: 9930
Drawing File #: 9930/44
Date: 06-2001
Drawn By: KI
Checked By: JM
Reviewed By: JM
PROJECT ENGINEER: JAMES M. JOHNSON, P.E.

Drawing Name
**BUILDING
SECTIONS
MAIN LOBBY**

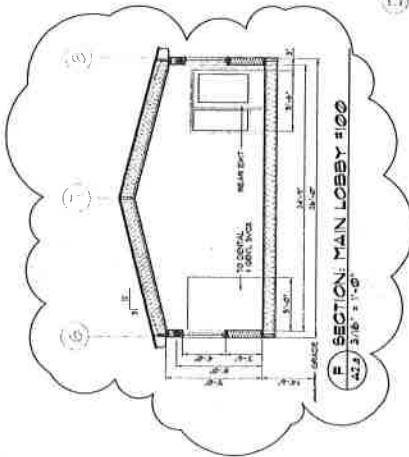
Sheet Number

A-4

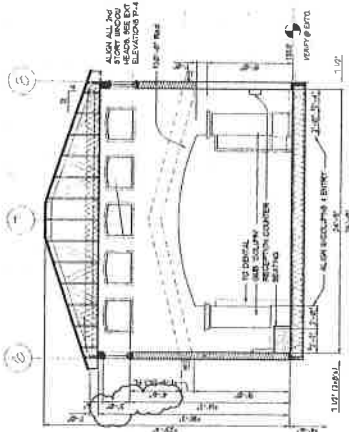
6 OF 18



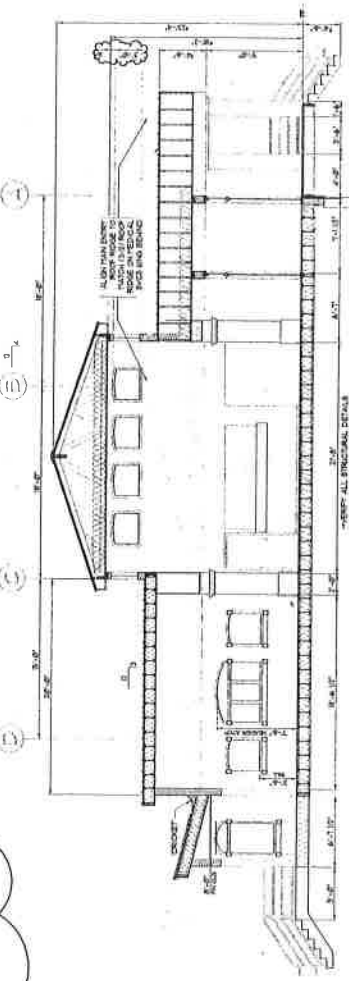
A SECTION ELEVATION: MEDICAL TOWARDS MAIN LOBBY
A2.3 3/16" x 11-0"



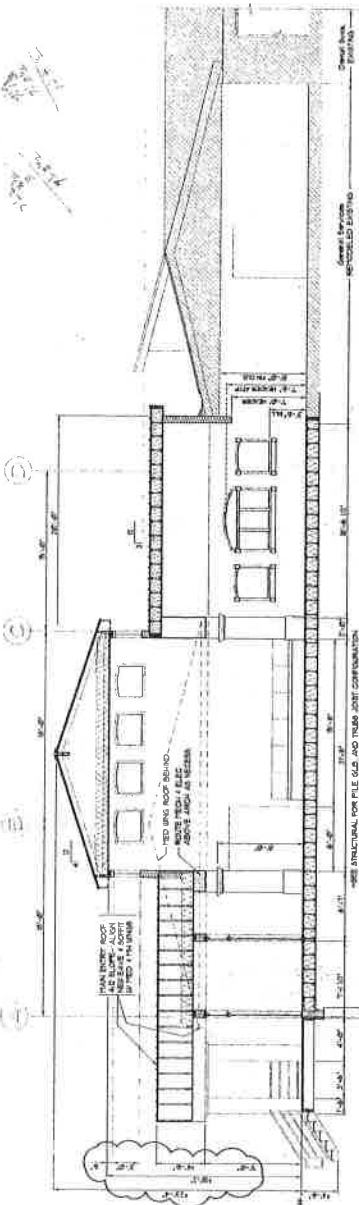
F SECTION: MAIN LOBBY #100
A2.3 3/16" x 11-0"



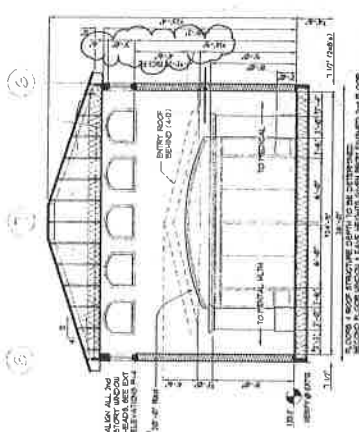
C SECTION: MAIN LOBBY #100
A2.3 3/16" x 11-0"



B SECTION: MAIN LOBBY #100
A2.3 3/16" x 11-0"



D SECTION: MAIN LOBBY #100
A2.3 3/16" x 11-0"



E SECTION: MAIN LOBBY #100
A2.3 3/16" x 11-0"



KARLUK DESIGN INCORPORATED
 1002 E. 6TH AVENUE
 ANCHORAGE, ALASKA 99501
 TEL: (907) 288-4728
 FACSIMILE: (907) 276-0879

Consultant:
 FRANKLIN & ASSOCIATES
 1000 W. 17th AVENUE
 ANCHORAGE, ALASKA 99501
 MECHANICAL & ELECTRICAL
 CONSULTING ENGINEERS



Stamp
 Project Name

GALENA CENTER
 GALENA, ALASKA

Project Phase / Status

IN-PROCESS
CONSTRUCTION DRAWINGS

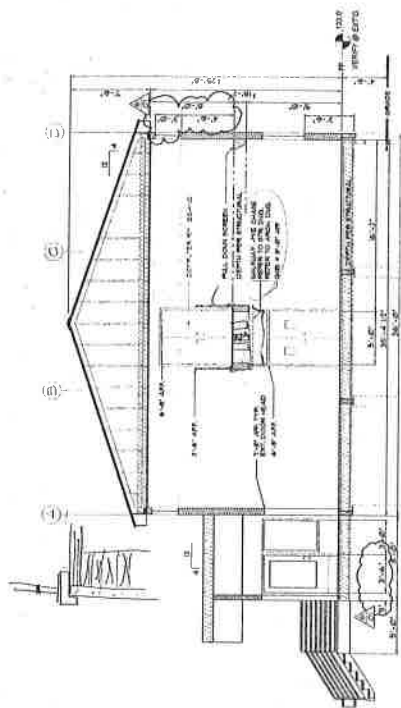
Project # 9930
 Drawing File # 9930/A6
 Date 06-2001
 Drawn By: KJ
 Checked By: JM
 Revisions: 01/09/2001 RJ

Drawing Name

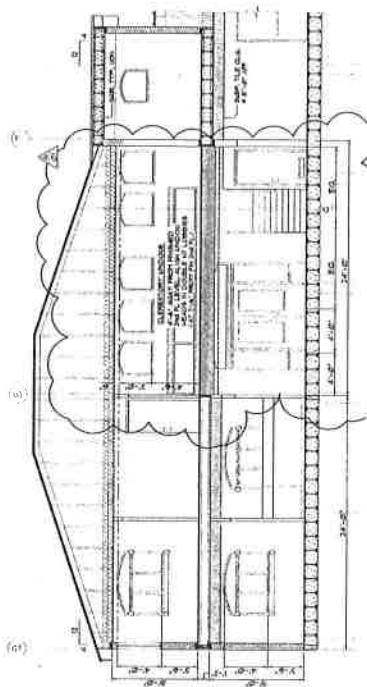
**BUILDING SECTIONS
 ADMIN & MULTI-MEDIA**

Sheet Number:

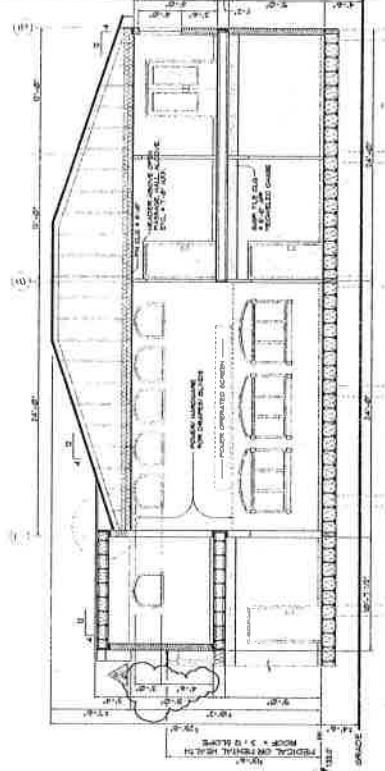
A-6
 8 OF 18



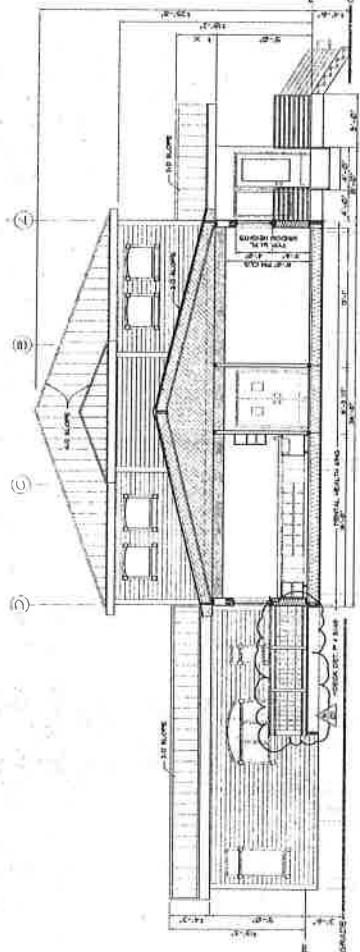
F SECTION: MULTI-MEDIA ROOM & ADMIN OFFICES
 3/8" = 1'-0"



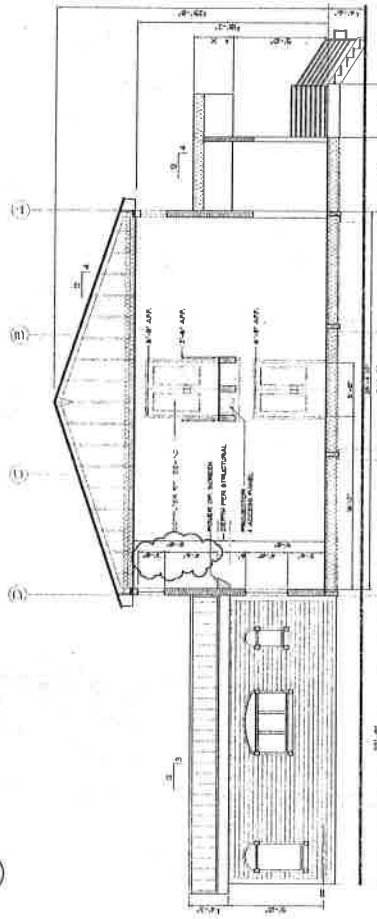
H SECTION: ADMIN OFFICES, MULTI-MEDIA & COMPUTER RM
 3/8" = 1'-0"



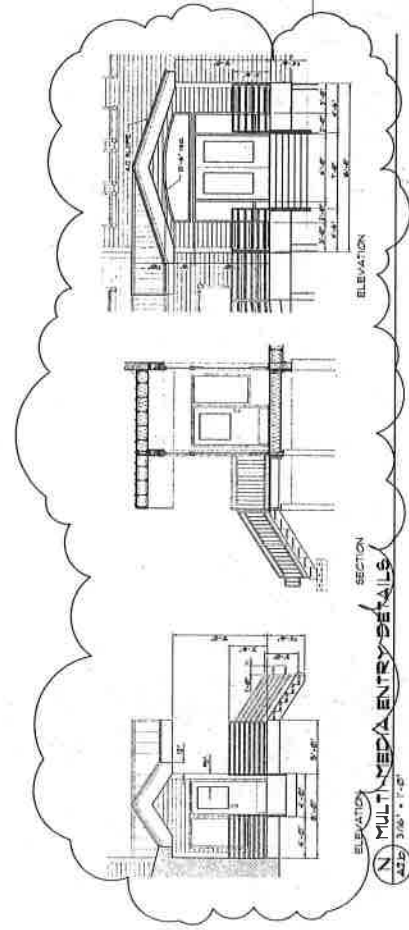
M SECTION: MULTI-MEDIA ROOM
 3/8" = 1'-0"



G SECT. ELEVATION: MENTAL HEALTH & ADMIN OFFICES
 3/8" = 1'-0"



K SECTION: MULTI-MEDIA ROOM
 3/8" = 1'-0"



N MULTI-MEDIA ENTRY DETAILS
 3/8" = 1'-0"



PRYVALIN & ASSOCIATES
 REGISTERED PROFESSIONAL ENGINEERS
 1024 CONSULTING ENGINEERS
 455 PENNSYLVANIA AVENUE
 ANCHORAGE, ALASKA 99501



Stamp

Project Name
GALENA CENTER
 GALENA, ALASKA

Project Phase / Status

IN PROGRESS
CONSTRUCTION DRAWINGS

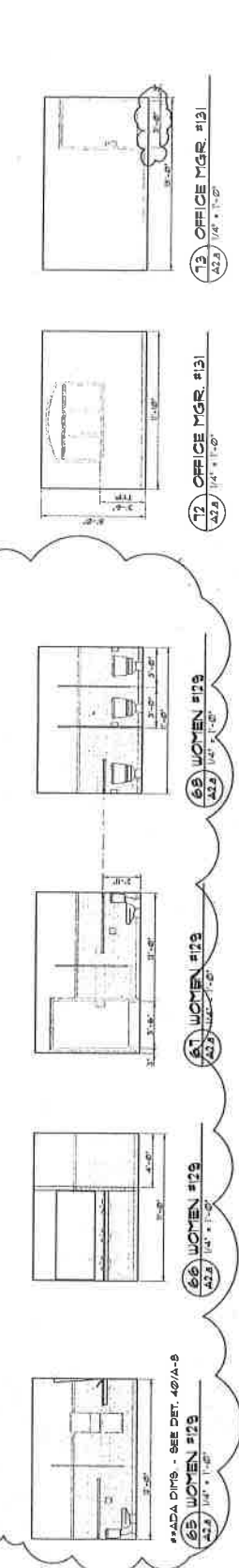
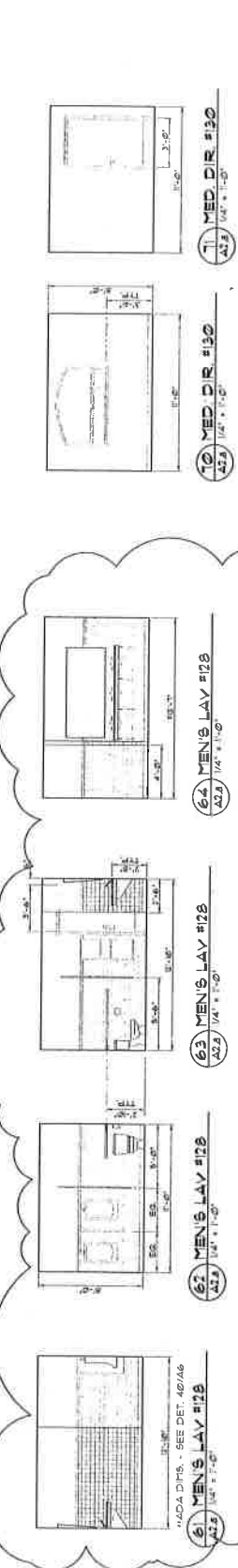
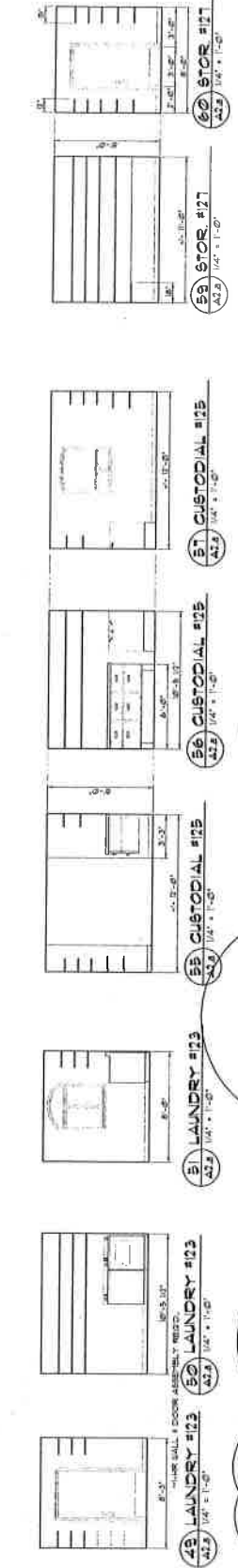
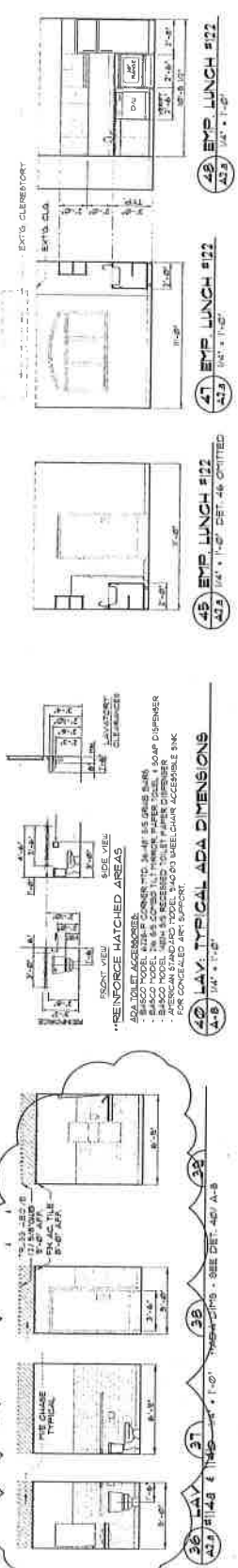
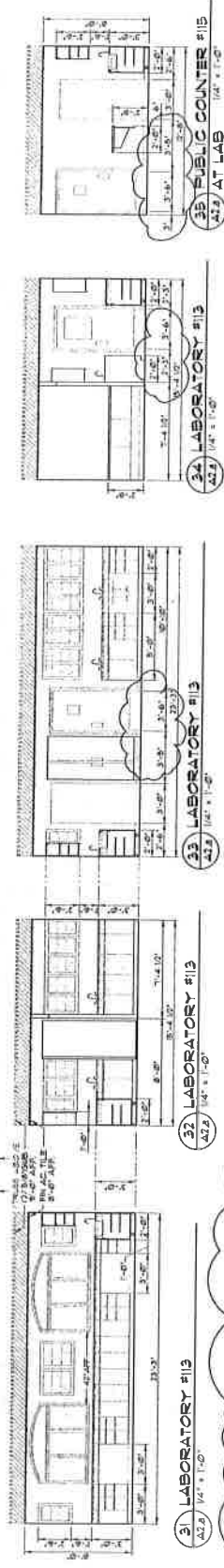
Project No. 9930
 Drawing File # 9930/AR
 S. Date 06-10-01
 Drawn By: JM
 Checked By: JM
 Revisions:

Drawing Name
INTERIOR ELEVATIONS MEDICAL & GENERAL SERVICES

Sheet Number

A-8

10 OF 18





1045 E. 6TH AVENUE
ANCHORAGE, ALASKA, 99501
TEL 907.258-1722
FACSIMILE 907.272-9479

Consultant:
FRANKLIN & ASSOCIATES
ARCHITECTS
1000 W. 11TH AVENUE
ANCHORAGE, ALASKA 99501
MBA CONSULTING ENGINEERS
MECHANICAL & ELECTRICAL
1000 W. 11TH AVENUE
ANCHORAGE, ALASKA 99501



Project Name:

SALENA CENTER

SALENA, ALASKA

Project Phase: Shells

IN-PROGRESS CONSTRUCTION DRAWINGS

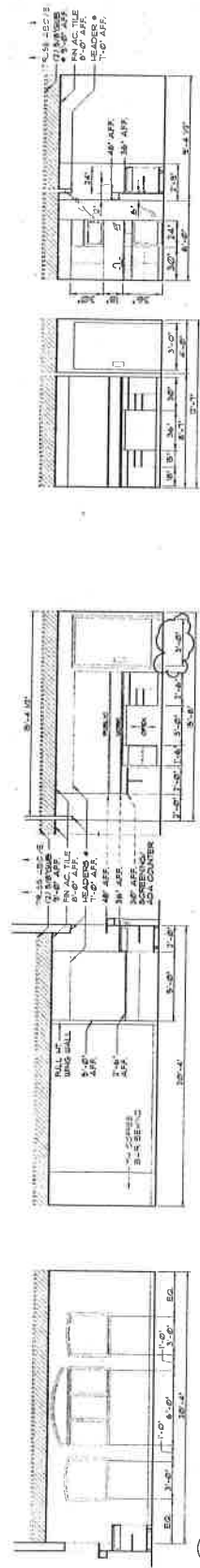
Project #: 9910
Drawing File #: 9920/A9
Date: 05-2001
Drawn By: KI
Checked By: UK
Revisions:

Drawing Name:

INTERIOR
ELEVATIONS
MENTAL HEALTH
& PROF. OFFICES

A-9

11 OF 18



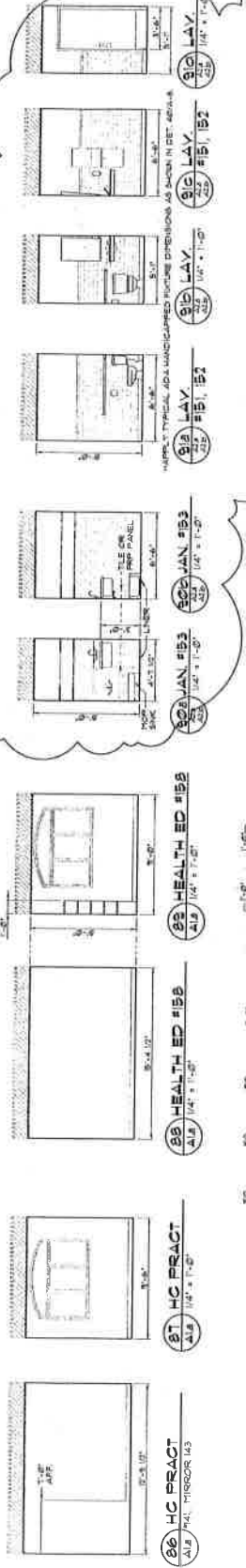
83 MH RECEPTION/FILE
A1.5 1/4" x 1'-0"

84 MH FILE
A1.5 1/4" x 1'-0"

85 CENTRAL FILE #142
A1.5 1/4" x 1'-0"

87 CENTRAL FILE #142
A1.5 1/4" x 1'-0"

80 CENTRAL FILE #142
A1.5 1/4" x 1'-0"



89 LAY. #151, #152
A2.5 1/4" x 1'-0"

90 LAY. #151, #152
A2.5 1/4" x 1'-0"

91 LAY. #151, #152
A2.5 1/4" x 1'-0"

92 LAY. #151, #152
A2.5 1/4" x 1'-0"

93 JAN. #153
A2.5 1/4" x 1'-0"

94 JAN. #153
A2.5 1/4" x 1'-0"

95 HEALTH ED #155
A1.5 1/4" x 1'-0"

96 HEALTH ED #155
A1.5 1/4" x 1'-0"

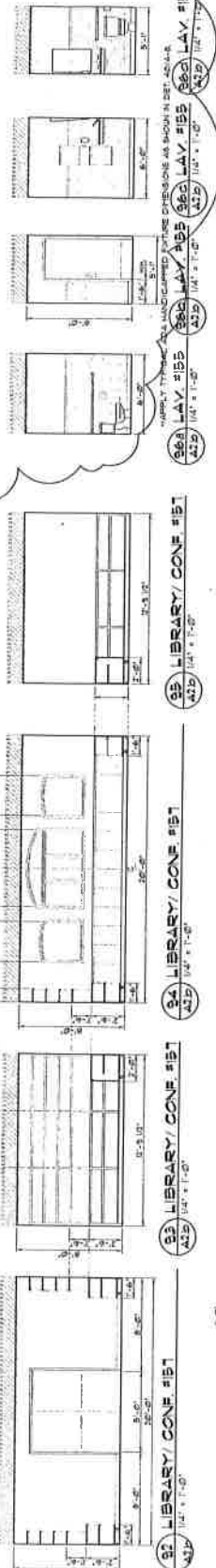
97 HC PRACT
A1.5 1/4" x 1'-0"

98 HEALTH ED #155
A1.5 1/4" x 1'-0"

99 HEALTH ED #155
A1.5 1/4" x 1'-0"

81 HC PRACT
A1.5 1/4" x 1'-0"

86 HC PRACT
A1.5 1/4" x 1'-0"



96 LAY. #155
A2.5 1/4" x 1'-0"

97 LAY. #155
A2.5 1/4" x 1'-0"

98 LAY. #155
A2.5 1/4" x 1'-0"

99 LAY. #155
A2.5 1/4" x 1'-0"

90 LIBRARY/CONF #151
A2.5 1/4" x 1'-0"

91 LIBRARY/CONF #151
A2.5 1/4" x 1'-0"

92 LIBRARY/CONF #151
A2.5 1/4" x 1'-0"

93 LIBRARY/CONF #151
A2.5 1/4" x 1'-0"

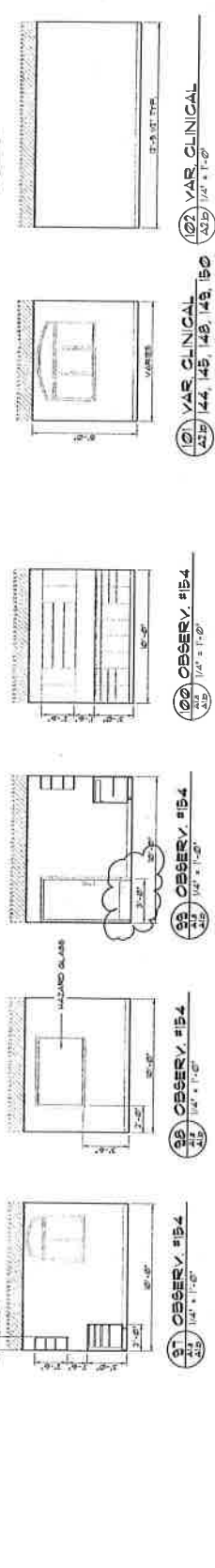
94 LIBRARY/CONF #151
A2.5 1/4" x 1'-0"

95 LIBRARY/CONF #151
A2.5 1/4" x 1'-0"

96 LIBRARY/CONF #151
A2.5 1/4" x 1'-0"

97 LIBRARY/CONF #151
A2.5 1/4" x 1'-0"

98 LIBRARY/CONF #151
A2.5 1/4" x 1'-0"



101 VAR CLINICAL
A2.5 1/4" x 1'-0"

102 VAR CLINICAL
A2.5 1/4" x 1'-0"

103 VAR CLINICAL
A2.5 1/4" x 1'-0"

104 VAR CLINICAL
A2.5 1/4" x 1'-0"

105 OBSERY #154
A2.5 1/4" x 1'-0"

106 OBSERY #154
A2.5 1/4" x 1'-0"

107 OBSERY #154
A2.5 1/4" x 1'-0"

108 OBSERY #154
A2.5 1/4" x 1'-0"

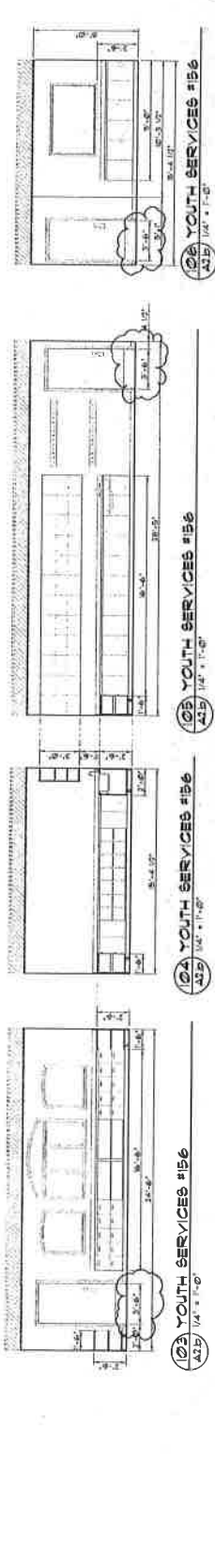
109 OBSERY #154
A2.5 1/4" x 1'-0"

110 OBSERY #154
A2.5 1/4" x 1'-0"

111 OBSERY #154
A2.5 1/4" x 1'-0"

112 OBSERY #154
A2.5 1/4" x 1'-0"

113 OBSERY #154
A2.5 1/4" x 1'-0"



120 YOUTH SERVICES #156
A2.5 1/4" x 1'-0"

121 YOUTH SERVICES #156
A2.5 1/4" x 1'-0"

122 YOUTH SERVICES #156
A2.5 1/4" x 1'-0"

123 YOUTH SERVICES #156
A2.5 1/4" x 1'-0"

124 YOUTH SERVICES #156
A2.5 1/4" x 1'-0"

125 YOUTH SERVICES #156
A2.5 1/4" x 1'-0"

126 YOUTH SERVICES #156
A2.5 1/4" x 1'-0"

127 YOUTH SERVICES #156
A2.5 1/4" x 1'-0"

128 YOUTH SERVICES #156
A2.5 1/4" x 1'-0"

129 YOUTH SERVICES #156
A2.5 1/4" x 1'-0"

130 YOUTH SERVICES #156
A2.5 1/4" x 1'-0"

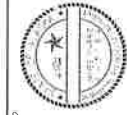
131 YOUTH SERVICES #156
A2.5 1/4" x 1'-0"

132 YOUTH SERVICES #156
A2.5 1/4" x 1'-0"



KARLUK DESIGN
INCORPORATED
1926 4TH AVENUE
ANCHORAGE, ALASKA, 99501
TEL: 907-298-7722
FACSIMILE: 907-276-8779

Consultant:
FRANKLIN & ASSOCIATES
ARCHITECTS
1000 W. 11TH AVENUE
ANCHORAGE, ALASKA 99501
MECHANICAL & ELECTRICAL
DESIGNERS



Stamp

PROJECT NAME:

GALENA CENTER

GALENA, ALASKA

Project Phase / Status:

IN-PROGRESS
CONSTRUCTION
DRAWINGS

Project #: 9810
Drawing File #: 9810/110
Date: 08-2001
Drawn By: JH
Checked By: JH
Revisions:

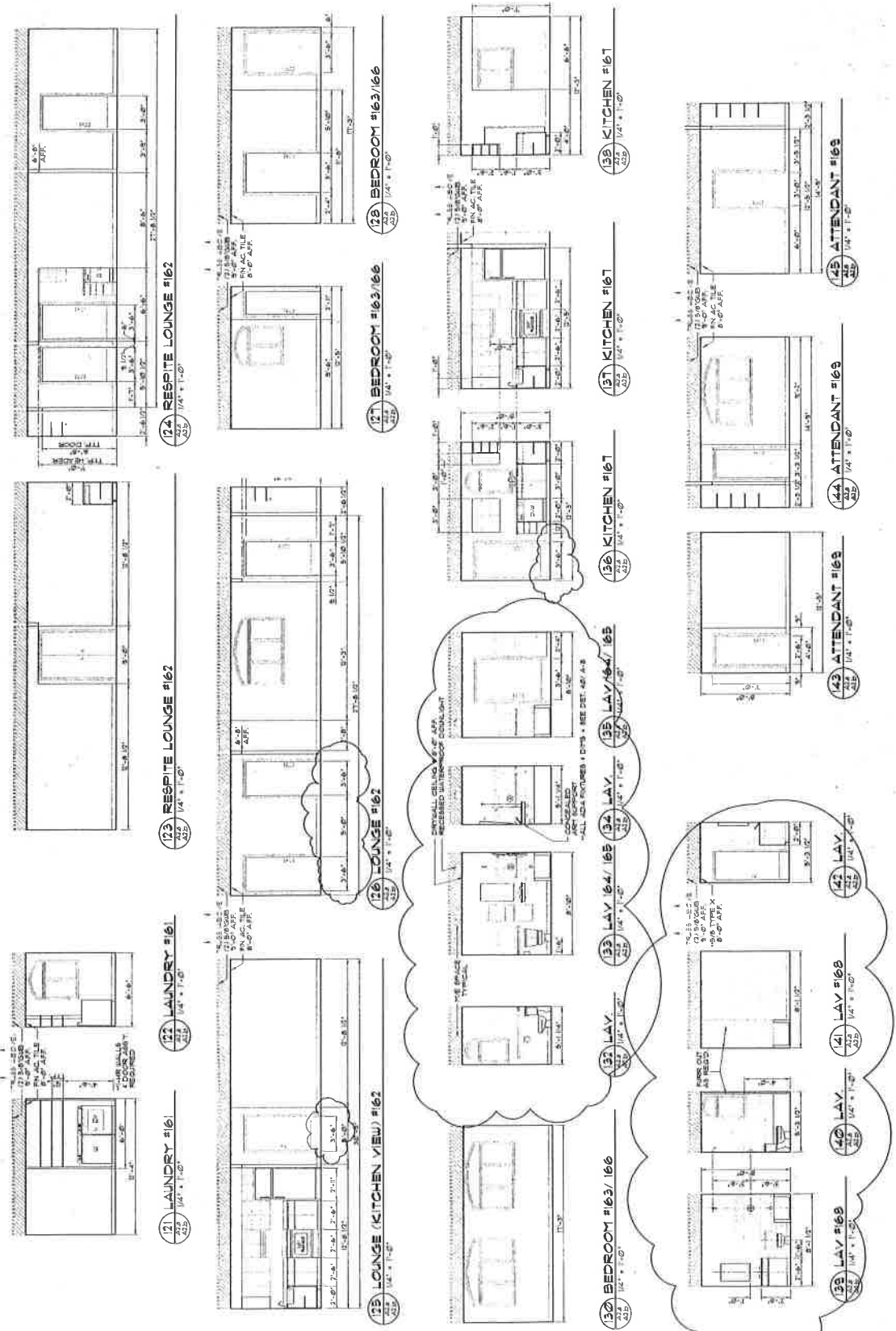
Drawing Name:

INTERIOR
ELEVATIONS
RESPIRE
CENTER

Sheet Number

A-10

12 OF 18

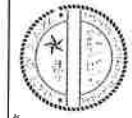




KARLUK DESIGN
INCORPORATED
1062 F 6TH AVENUE
ANCHORAGE ALASKA 99501
TEL 807 289-7722
FACSIMILE 807 276-8789

Consultant:

FRANKLIN & ASSOCIATES
1000 W 17th AVENUE
MBA CONSULTING ENGINEERS
1000 W 17th AVENUE
ANCHORAGE ALASKA 99501



Stamp

Project Name

GALENA CENTER

GALENA, ALASKA

Project Phase / Status

IN-PROGRESS CONSTRUCTION DRAWINGS

Project #: 9930
Drawing File #: 9930/A11
Date: 06-2001
Drawn By: KI
Checked By: JM
Revisions:

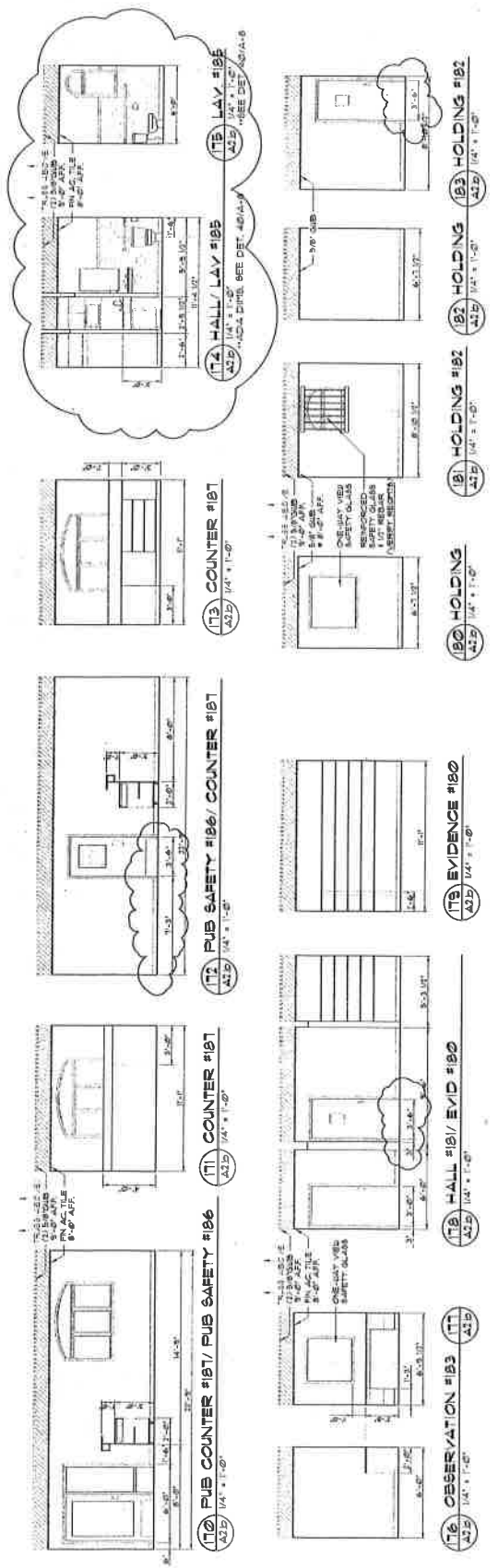
Drawing Name

INTERIOR ELEVATIONS PUBLIC SAFETY

Sheet Number

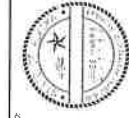
A-11

13 OF 18





Consultant:
FRANKLIN & ASSOCIATES
1000 W. 17th, Anchorage
MGA CONSULTING ENGINEERS
1000 W. 17th, Anchorage
WEST HONOLULU, HAWAII, HONOLULU



Stamp

Project Name

GALENA CENTER GALENA, ALASKA

Project Phase / Status

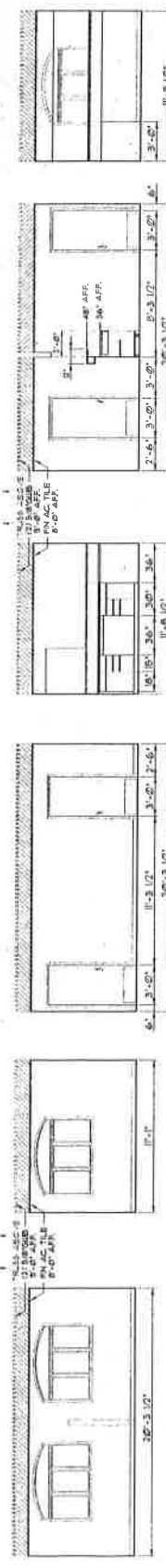
IN-PROGRESS CONSTRUCTION DRAWINGS

Project #: 9930
Drawing File #: 9930/A12
Date: 06-2001
Drawn By: KI
Checked By: JN
Revisions:

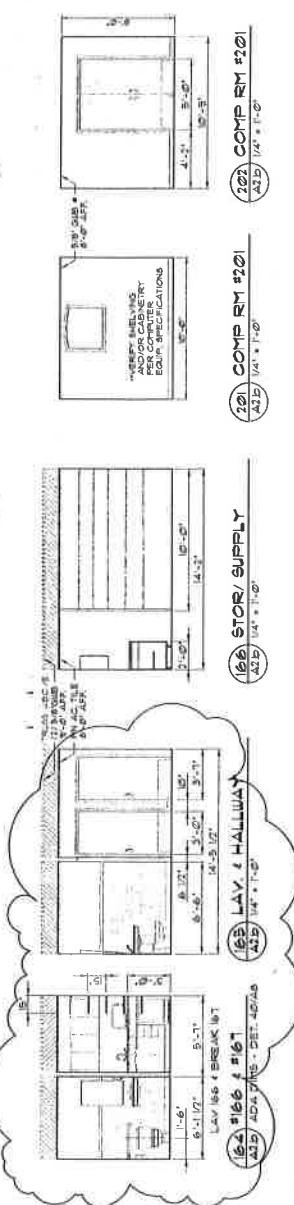
Drawing Name
INTERIOR
ELEVATIONS
ADMIN
SERVICES
1st & 2nd FLOORS
Sheet Number

A-12

14 OF 18



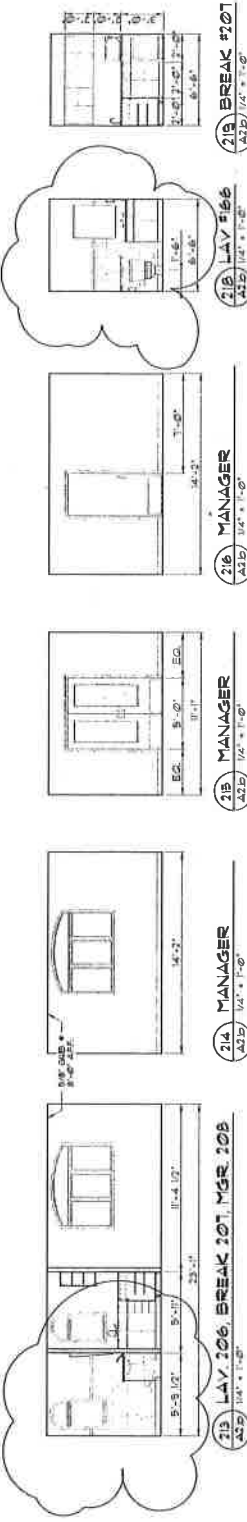
153 BOOKKEEPER #15
154 BOOKKEEPER #16
155 BOOKKEEPER #17
156 BOOKKEEPER #18
157 BOOKKEEPER #19
158 CLERK #13
159 CLERK'S RECEPTION #13 / 174
160 CLERK'S OFFICE



161 LAV & HALLWAY
162 LAV #66 & #167
163 RECEPTION / CLERKS
164 STORE / SUPPLY
165 COMP RM #20
166 COMP RM #20
167 COMP RM #20



168 ACCOUNTANT #202
169 ACCOUNTANT #203
170 CONF / WORK #203
171 CONF / WORK #203
172 CONF / WORK #203
173 CONF / WORK #203
174 CONF / WORK #203



175 LAY. 106, BREAK 107, MSR 108
176 MANAGER #204
177 MANAGER #205
178 MANAGER #206
179 MANAGER #207
180 MANAGER #208
181 LAY #66
182 BREAK #201



KARLUK DESIGN
INCORPORATED
1042 E. 67A AVENUE
ANCHORAGE, ALASKA 99501
TEL: (907) 258-7722
FACSIMILE: (907) 279-8899

FRANKLIN & ASSOCIATES
STRUCTURAL ENGINEERS
1000 W. 11TH AVENUE, SUITE 100
ANCHORAGE, ALASKA 99501
TEL: (907) 258-7722
FACSIMILE: (907) 279-8899



GALENA CENTER

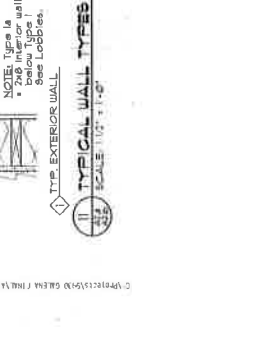
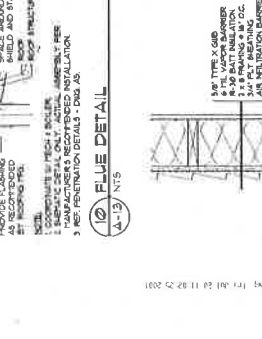
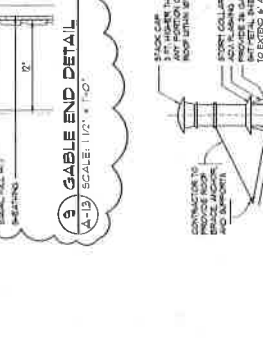
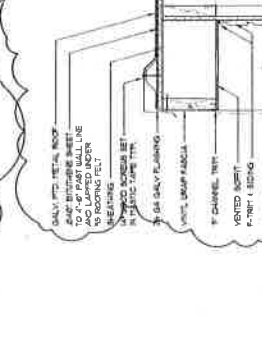
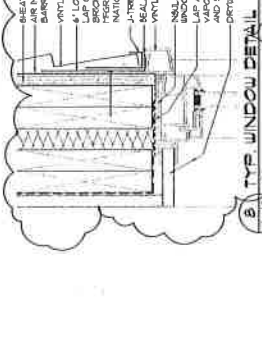
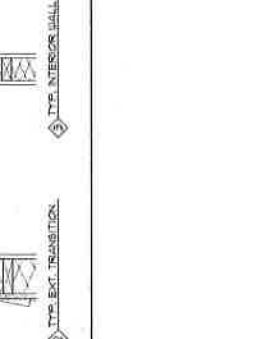
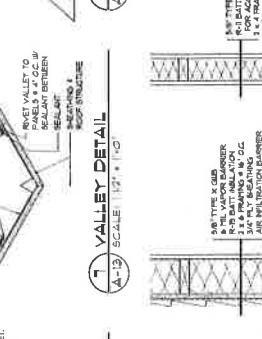
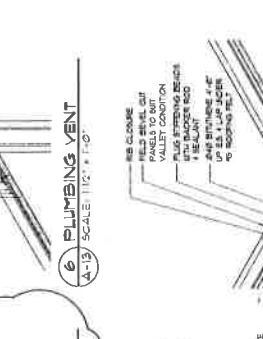
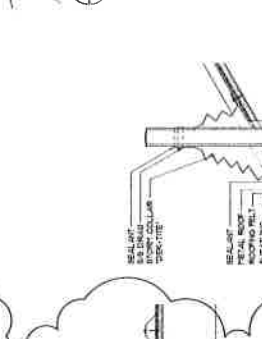
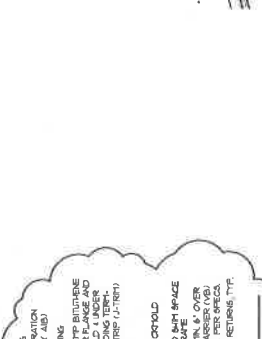
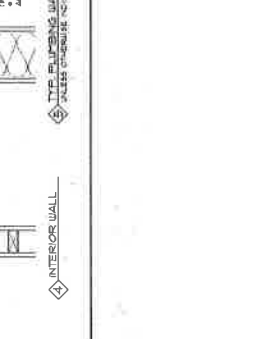
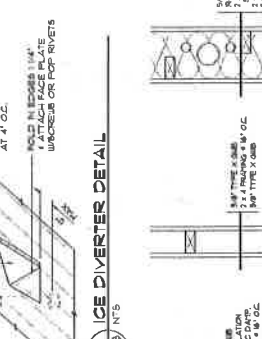
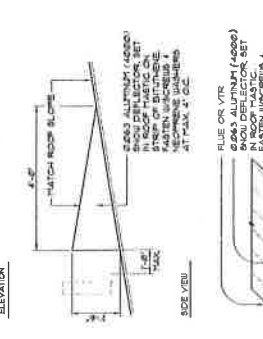
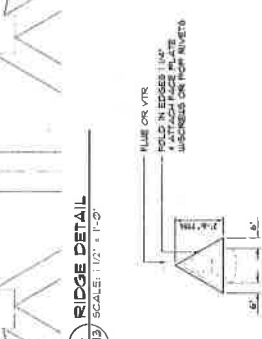
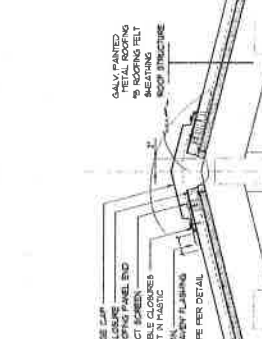
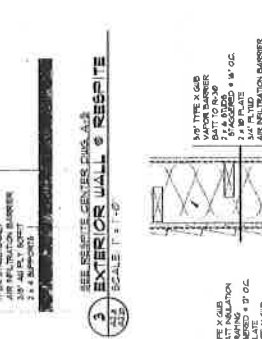
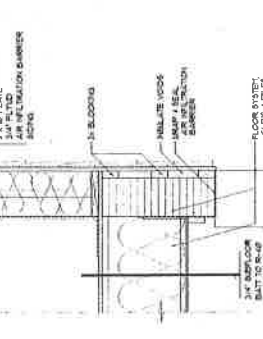
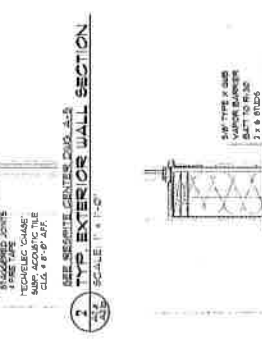
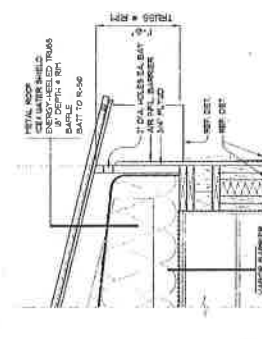
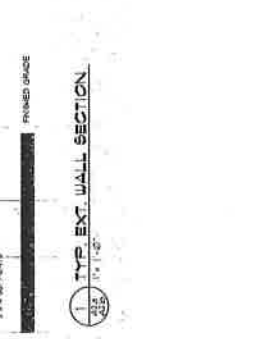
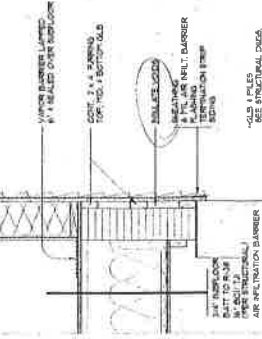
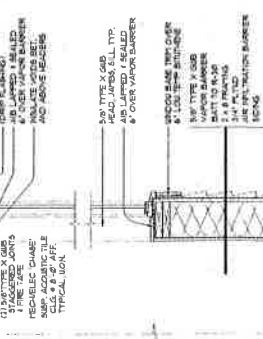
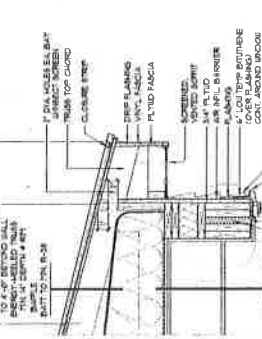
GALENA, ALASKA

Project Phase / Status
IN-PROGRESS
CONSTRUCTION
DRAWINGS

Project #: 9330
Drawing File #: 9330/A13
Date: 08-2000
Drawn By: KJ
Checked By: JJA
Revised: 08-21-00 (SEE PRELIM. MARKED)

Drawing Name
WALL & ROOF
DETAILS

Sheet Number:
A-13
15 OF 18





1042 E. 6TH AVENUE
ANCHORAGE, ALASKA 99501
TEL: (907) 288-7722
FACSIMILE: (907) 276-0939

Consultant:

Franklin & Associates
Consulting Engineers

205 EAST WHEATLAND AVENUE, SUITE 200
ANCHORAGE, ALASKA 99501, PHONE: (907) 771-1411



Project Name:

GALENA CENTER
GALENA, ALASKA

9-12
9-11

Project Phase / Status:

CONSTRUCTION DRAWINGS

Project #: 01-022

Drawing File #:

Drawn By: BPC

Checked By: NP

Revisions:

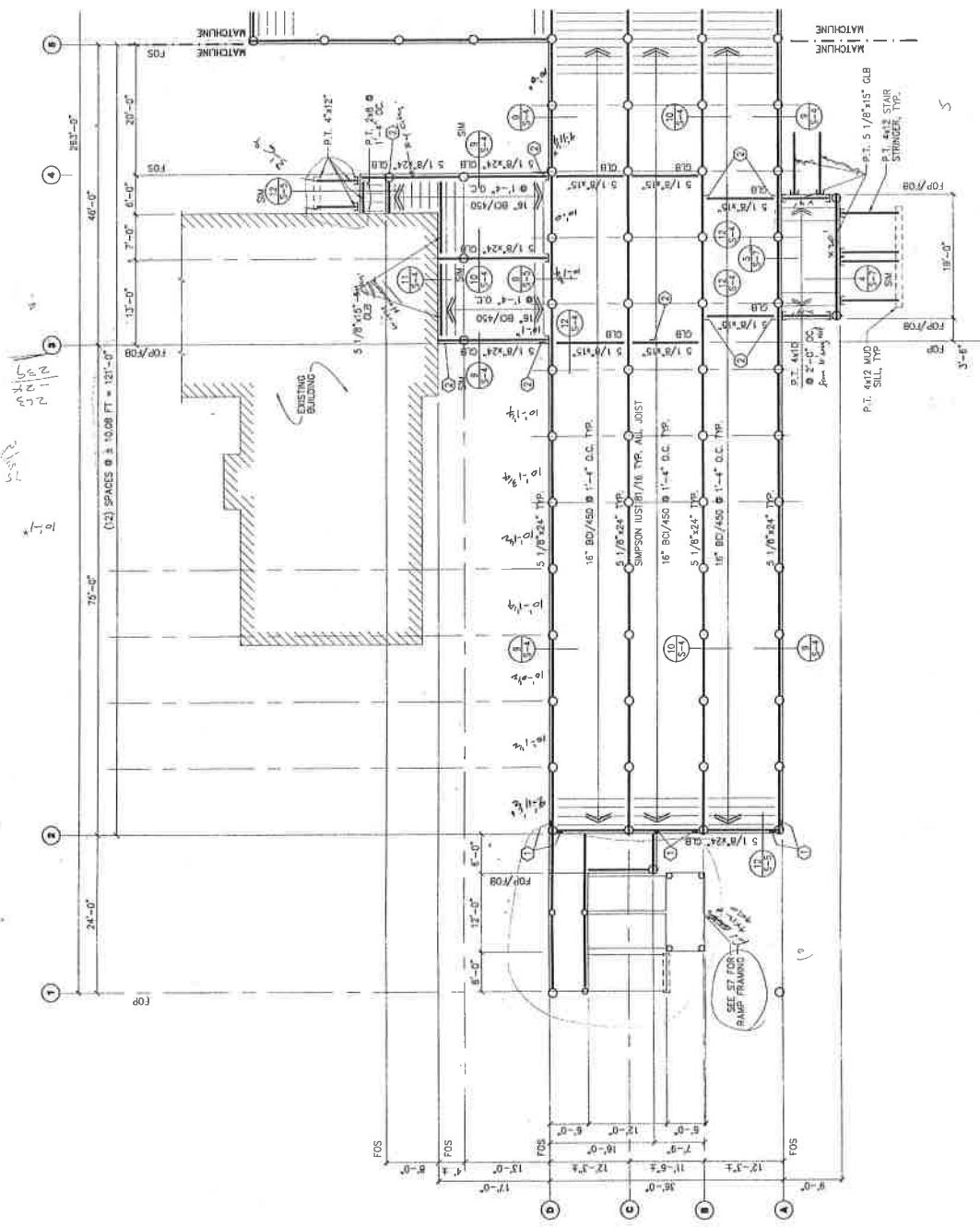
Drawing Name:

FLR. FRAM. PLAN
PARTIAL FIRST FLOOR

Sheet Number:

S1.a

1 OF 8



FOUNDATION / FLOOR FRAMING PLAN
1/8" = 1' - 0"

FOS - FACE OF STUD
F0B - FACE OF BEAM
PT - WOOD MEMBERS REQUIRED TO BE PRESSURE TREATED ARE INDICATED AS PT.
-O- - PILE LOCATIONS VARIES. VERIFY LOCATION IN FIELD



KARLUK DESIGN BUILDING
 1062 E. 67TH AVENUE, SUITE 101
 ANCHORAGE, ALASKA 99507
 TEL: 907.258.7272
 FACSIMILE: 907.276-9879

Consultant:

Franklin & Associates
 Consulting Engineers
 115 East 12th Avenue, Suite 100
 ANCHORAGE, ALASKA 99501

Stamp



Project Name:

GALENA CENTER
 GALENA, ALASKA

Project Phase / Status:

CONSTRUCTION DRAWINGS

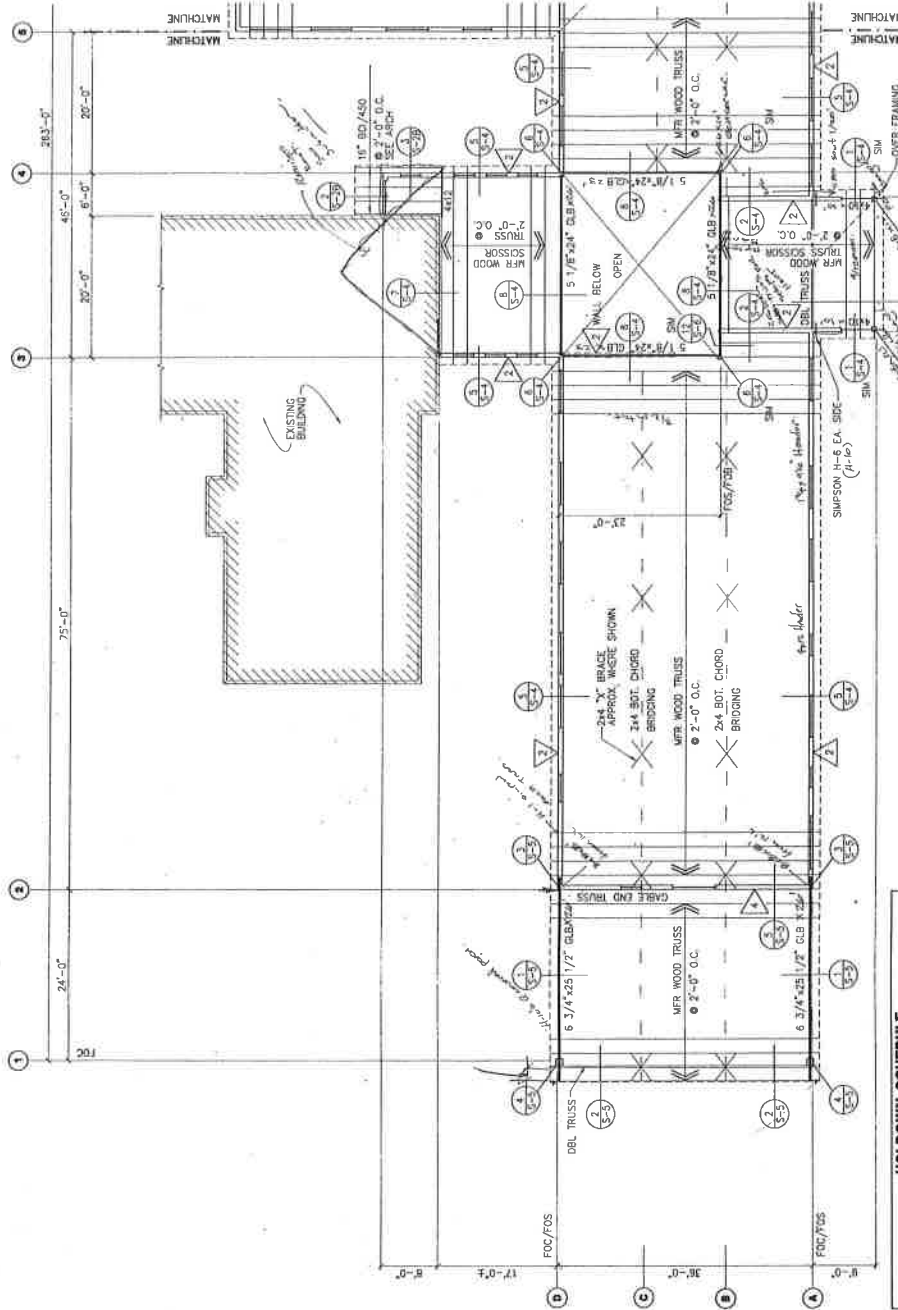
Project No. 01-022
 Drawing File -
 Drawn By: BFC
 Checked By: MF
 Revisions:

Drawing Name:

ROOF FRAM. PLAN
 PARTIAL
 FIRST FLOOR

Sheet Number:

S2.a
 3 OF 10



GENERAL NOTES - FRAMING PLANS

1. ALL DIMENSIONS ARE TO FACE OF STUD UNLESS OTHERWISE SHOWN.
2. ALL HEADERS UP TO 4'-0" SPAN ARE (2) 2X12. ALL HEADERS UP TO 8'-0" BEARING ARE (2) 2X12. ALL HEADERS OVER 8'-0" BEARING ARE (2) 2X12 THROUGH STUD SPANS LESS THAN 4'-0". PROVIDE (2) BEARING STUDS AND (2) THROUGH STUD SPANS 4'-0" TO 8'-0" UNLESS OTHERWISE SHOWN.
3. SHEAR WALL SCHEDULE INDICATES SIZING AND NAILING REQUIREMENTS FULL LENGTH OF WALL OR GRID. SEE FRAMING PLANS FOR WALL LOCATIONS BELOW THAT LEVEL.
4. SHEAR WALL NAILING SHOWS FOR EDGES AND ALL HOLD-DOWN FRAMING MEMBERS. NAIL OTHER FIELD MEMBERS AT 12 INCHES ON CENTER.

ROOF FRAMING PLAN

1/8" = 1' - 0"

- FOS - FACE OF STUD
- FBB - FACE OF BEAM
- PT - WOOD MEMBERS REQUIRED TO BE PRESSURE TREATED AS P.T.
- FOC - FACE OF COLUMN

HOLD-DOWN SCHEDULE

WALL MARK	HOLD-DOWN	STUDS	FASTENER	ANCHOR	MIN. EMBED.
(1)	15T-148	(2)2x6	16d NAILS	-	-
(2)	CS1802-0"	(2)2x6	10d NAILS	-	-

SHEAR WALL SCHEDULE

MARK	SHEATING	FASTENER	BOT. P. FASTENER	ANCH. BOLT
(1)	15/32 CDX	10d @ 6" O.C.	16d @ 8" O.C.	-
(2)	15/32 CDX	10d @ 4" O.C.	16d @ 4" O.C.	-
(3)	15/32 CDX	10d @ 3-1/2" O.C.	16d @ 4" O.C.	-
(4)	15/32 CDX	10d @ 4" O.C.	16d @ 2" O.C.	-

* STAGGER VERTICAL PLYWOOD JOINTS SO THAT BOTH SIDES DO NOT FALL ON THE SAME STUD.

SEE PLAN AND HOLD-DOWN SCHEDULE FOR END OF WALL CONDITION



1046 E. 67th AVENUE
ANCHORAGE, ALASKA 99501
TEL. 807.258-7322
FACSIMILE 807.276-9879

Consultant:

Franklin & Associates
Consulting Engineers

332 EAST HANCOCK AVE. SUITE 1 202
ANCHORAGE, ALASKA 99503 PHONE (907) 271-1821



Project Name

GALENA CENTER
GALENA, ALASKA

Project Phase - *Submit*

CONSTRUCTION DRAWINGS

Project # 04-022
Drawing File # -

Date:

Drawn By: BFG

Checked By: NF

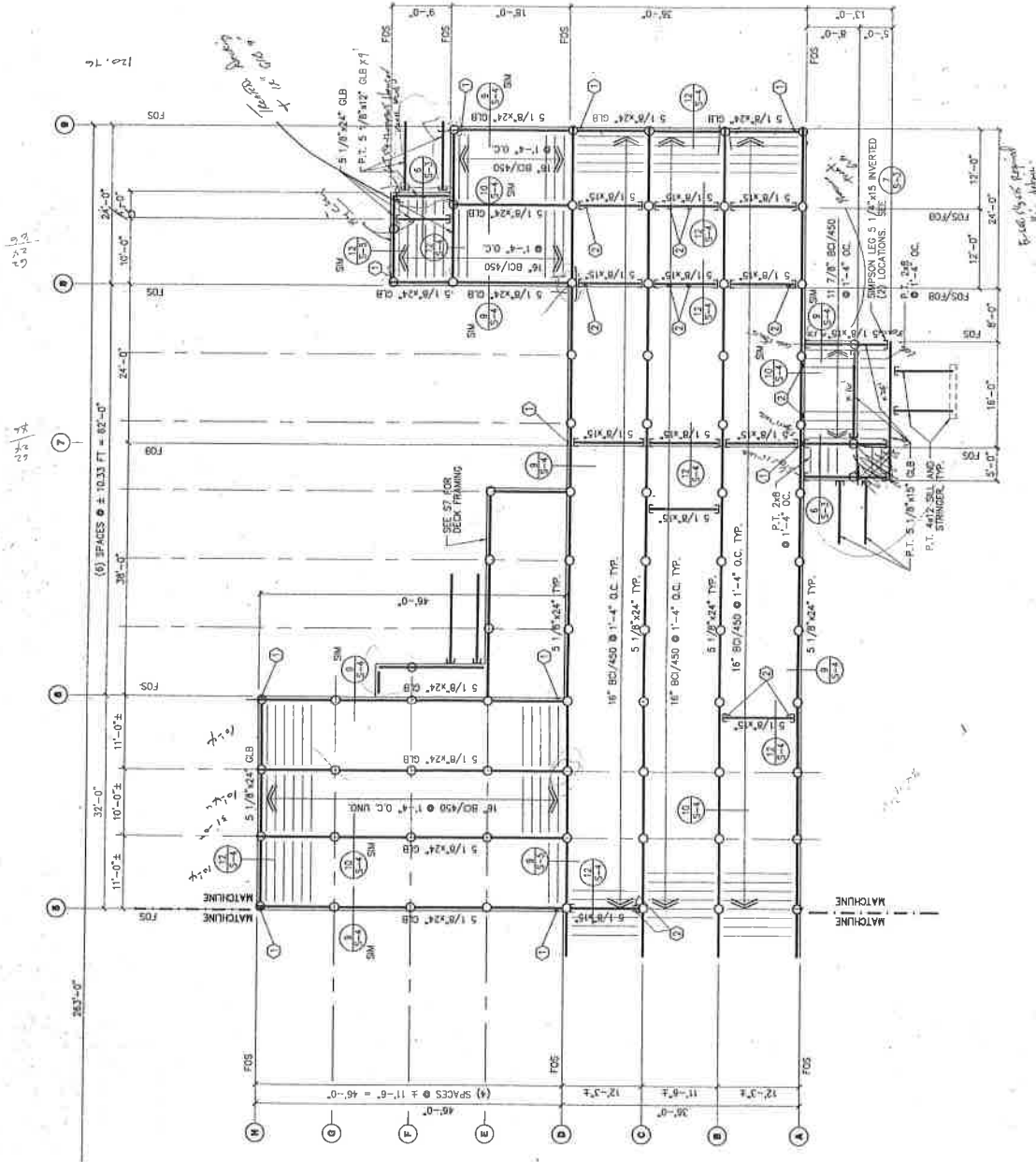
Revisions:

Drawing Name

FLR. FRAM.
PARTIAL
FIRST FLOOR

Sheet Number

S1.b
2 OF 9



FOUNDATION / FLOOR FRAMING PLAN
1/8" = 1'-0"

- FOS - FACE OF STUD
- FBB - FACE OF BEAM
- PT - WOOD MEMBERS REQUIRED TO BE PRESSURE TREATED ARE INDICATED AS P.T.
- OC - PILE LOCATIONS VARY. VERIFY LOCATION IN FIELD



1642 E. 6TH AVENUE
ANCHORAGE, ALASKA, 99501
TEL: 907.268-7722
FACSIMILE: 907.276-9875

Consultant:

Franklin & Associates
Consulting Engineers

225 EAST FRANKLIN AVE. SUITE # 202
ANCHORAGE, ALASKA 99501 PHONE: (907) 276-1122



Project Name:

GALENA CENTER
GALENA, ALASKA

Project Phase / Status:

CONSTRUCTION DRAWINGS

Project #: 01-022

Drawing File #:

Date:

Drawn By: BFG

Checked By: NF

Revisions:

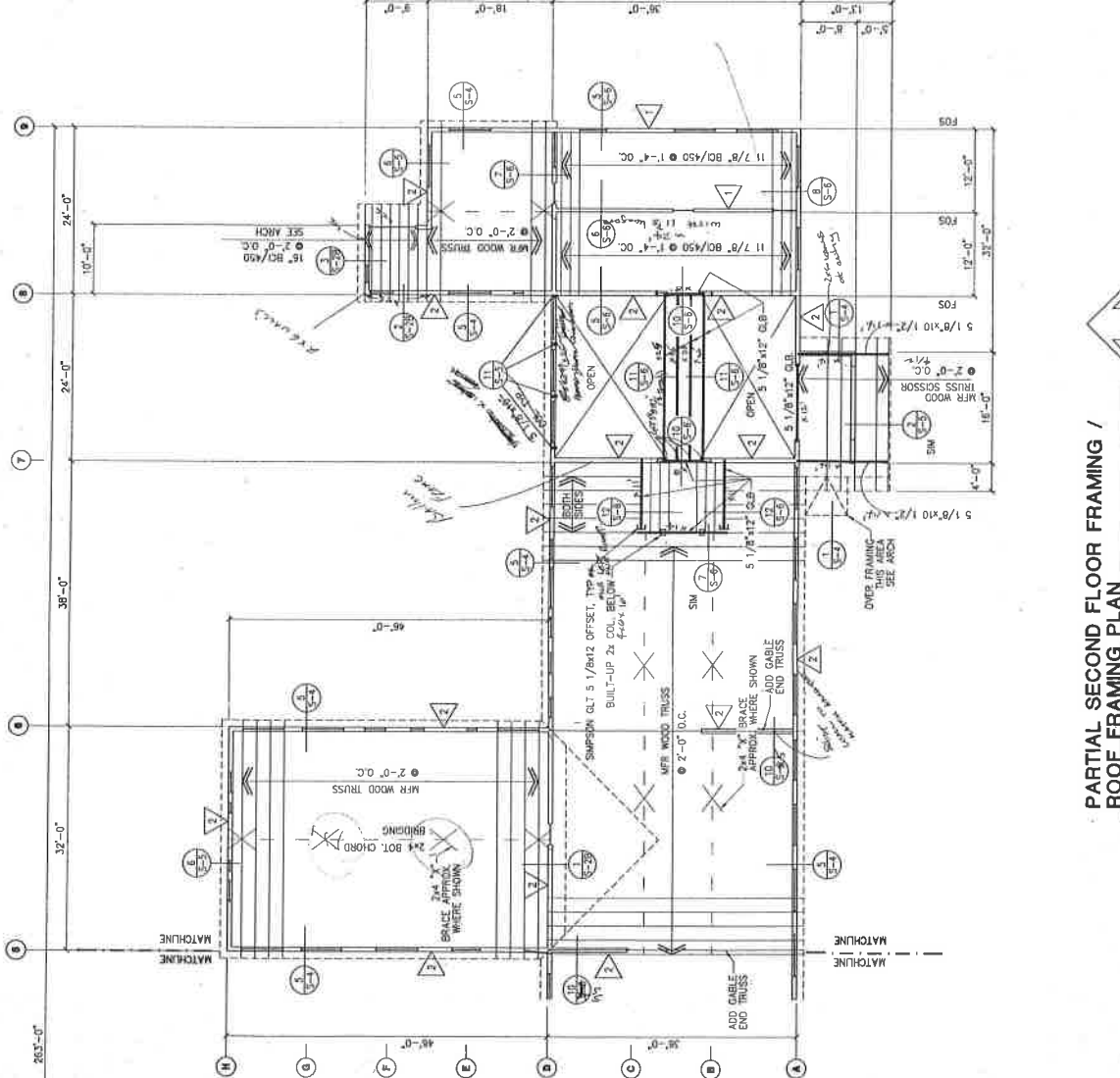
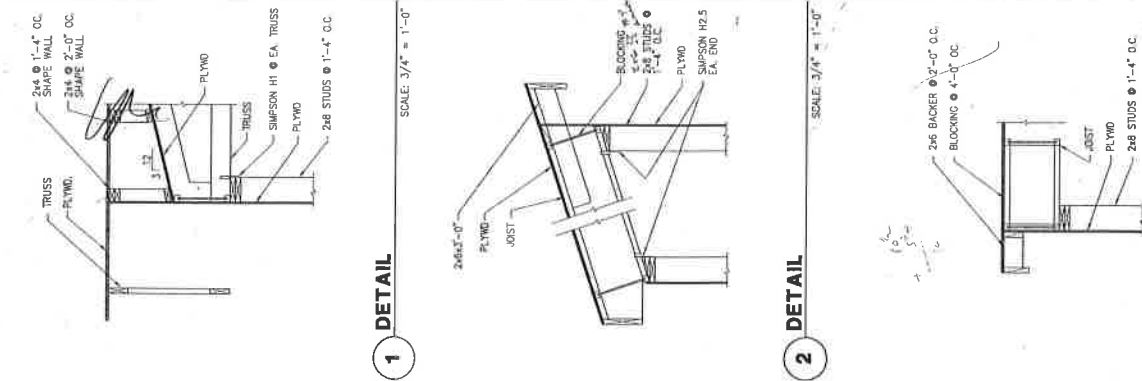
Drawing Number:

ROOF FRAM.
PLAN
W/ PARTIAL
SECOND FLOOR

Sheet Number:

S2.b

4 OF 10



PARTIAL SECOND FLOOR FRAMING / ROOF FRAMING PLAN

1/8" = 1' - 0"
FOS - FACE OF STUD
FOT - FACE OF TRUSS
FT - WOOD MEMBERS REQUIRED TO BE PRESSURE TREATED ARE INDICATED AS P.T.

3 DETAIL

SCALE: 3/4" = 1'-0"

2 DETAIL

SCALE: 3/4" = 1'-0"

1 DETAIL

SCALE: 3/4" = 1'-0"



KARLUK DESIGN
INCORPORATED
1042 E. 6TH AVENUE
ANCHORAGE, ALASKA 99501
TEL: 907/287-7722
FACSIMILE: 907/276-0839

Consultant:

Franklin & Associates
Consulting Engineers
3025 EAST BROADWAY, SUITE 100
ANCHORAGE, ALASKA 99503 PHONE: (907) 371-1431



Project Name:

GALENA CENTER
GALENA, ALASKA

Project Phase / Status:

CONSTRUCTION DRAWINGS

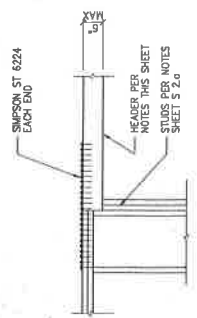
Project #: 01-024
Drawing File #:
G. Uite
Drawn By: BFG
Checked By: NF
Revisors:

Drawing Name:

ROOF FRAM. PLAN
PARTIAL UPPER ROOF

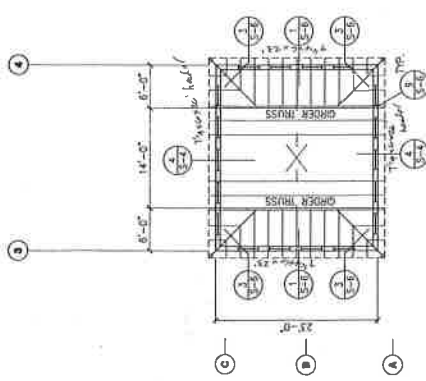
Sheet Number:

S2.C
6 OF 10



1 DETAIL

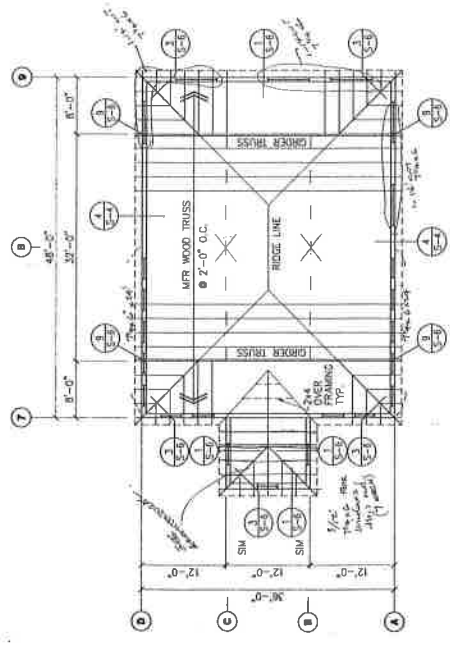
SCALE: 3/4" = 1'-0"



ROOF FRAMING PLAN

1/8" = 1' - 0"
- ROOF SLOPE 4:12 THIS PLAN
USE 2x6 HEADERS FOR ALL WINDOWS THIS PLAN. SEE DET (S2)

6x7 1/2 G-18



ROOF FRAMING PLAN

1/8" = 1' - 0"
- ROOF SLOPE 4:12 THIS PLAN
GRID (A) & (B) USE 2x6 HEADERS FOR 3'-0" WINDOWS THIS PLAN
- USE (C) 1x4x8" ML HEADERS FOR 6'-0" WINDOWS THIS PLAN
GRID (7) & (8) USE 6x6 HEADERS FOR ALL WINDOWS THIS PLAN. SEE DET (S2)



