



ALASKA AHEC PROGRAM 2021 ANNUAL REPORT



UAA Alaska Center for
Rural Health and Health Workforce
UNIVERSITY of ALASKA ANCHORAGE



MISSION AND ORGANIZATION

AHEC (Area Health Education Centers) program was developed by Congress in 1971 to recruit, train and retain a health professions workforce committed to underserved populations. The AHEC mission is to enhance access to quality health care, particularly primary and preventive care, by improving the supply and distribution of healthcare professionals via strategic partnerships with academic programs, communities and professional organizations.

The Health Resources and Services Administration (HRSA) provides funding under the direction of Bureau of Health Workforce (BHW). The Alaska AHEC Program supports the Bureau of Health Workforce with three (3) overarching goals:

1. Diversity: Preparing a diverse, culturally competent workforce.
2. Distribution: Improving workforce distribution among rural and underserved populations.
3. Practice Transformation: Developing primary care models that can deliver care in rural and underserved communities.

HISTORY

In 2005, the University of Alaska Anchorage received its first five year award and was also the first AHEC Program in the country to be awarded to a School of Nursing, rather than a School of Medicine. The Alaska AHEC Program Office and six regional centers conduct educational activities to recruit students into health professions, to engage and expose healthcare students to primary care in rural or underserved settings, and to provide Continuing Education in new and emerging issues such as COVID-19.

LETTER FROM THE DIRECTOR



It is hard to believe nearly two years have passed since the beginning of the COVID-19 pandemic. Although we all wish the pandemic was behind us, it is clear we are not there yet. We have adapted to a new normal and life as we once knew it may never be the same again.

The Alaska AHEC program continues to support healthcare workforce development across the state. Our healthcare workforce is more visible and essential yet also more overburdened and burnt out than ever before. In turn, our work is more important than ever!

This is the final year of our five-year grant cycle for core AHEC funding from the Health Resources and Services Administration. Our team is working diligently to complete our application for our next five year cycle. This new cycle will include some shifts for the AHEC Scholars program including two new core topic areas focused on Virtual Learning & Telehealth as well as Connecting Communities & Supporting Health Professionals.

As our healthcare landscape evolves, you can all count on the Alaska AHEC to provide high quality education and training for Alaska's current and future healthcare providers!

Gloria Burnett

Gloria Burnett, MS
Director, Alaska's AHEC
907-786-6705
gburnett3@alaska.edu

MEET OUR NEWEST RURAL HEALTH CARE ADVOCATES



NAOMI DIGITAKI

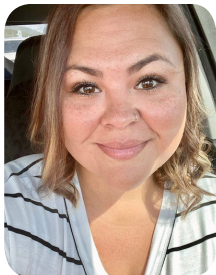
Born and raised in the Pacific Islands, Naomi Digitaki has lived in Hawaii for most of her life. She loves living and working among diverse cultures and communities and has a keen interest in learning new languages. She obtained a Bachelor of Science degree at BYU-Hawaii and an MBA at Hawaii Pacific University. Her career in education and her extensive volunteer experience have focused predominantly on serving and helping native populations and communities. For over fifteen years, Naomi worked as executive director of a technical/vocational school that served predominantly Native Hawaiian students. Upon arriving in Alaska in 2020, she added to her experience by being the HR Director for the North Slope Borough School District and volunteering at the Native Village of Barrow in America's northernmost city of Utqiagvik.

Naomi became the Yukon-Kuskokwim Region's AHEC Director in July 2021.



MARY MCEWEN

Mary McEwen is the incoming Southeast AHEC Director in Juneau. Born in Sitka and raised in Anchorage, she's passionate about improving access to healthcare in remote and underserved communities in Alaska and beyond. Mary's career in public health includes service as a Peace Corps volunteer in West Africa, several years with the State of Alaska Division of Public Health, and work with non-governmental organizations elsewhere in Africa, the Middle East, and the Pacific. Mary earned a Masters in Public Health from Yale in 2011 where she studied global health and health policy. A fan of vintage sewing machines, Mary has sewn over a thousand cloth face masks since the start of the pandemic (though she recommends using the best masks available to you, which might not be the homemade kind).



WHITNEY PAOLINO

Meet Whitney Paolino, Interior Alaska AHEC Director. She was born and raised in the Fairbanks/North Pole area with her maternal grandparents from Nome and Ruby.

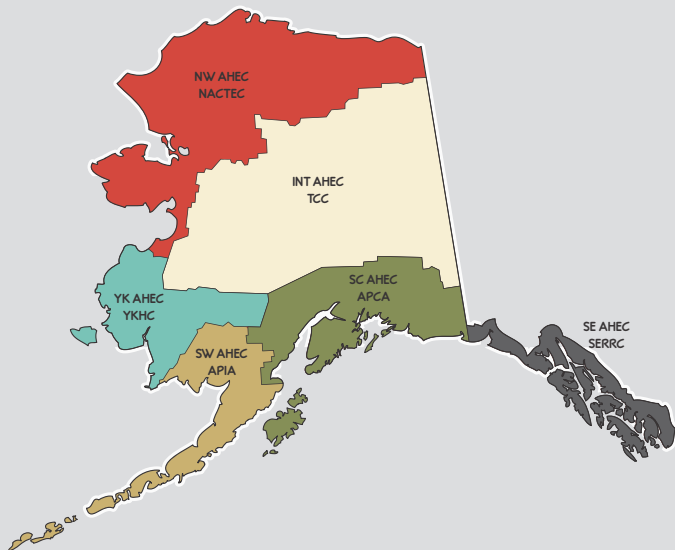
She has been working for Chief Andrew Isaac Health Center for 8 years where she first started as an intern. She graduated with her AAS in Medical Assisting in 2016 and has since held many roles at CAIHC in both medical and in administration. When she isn't working, she enjoys spending time with her husband, 2 children, and 3 dogs. As a proud hockey mom in the Fairbanks community, she has volunteered as her son's team manager for the last 3 seasons. Whitney loves working in the health field and is very excited to be a part of AHEC and to collaborate with our communities, and healthcare professionals around the state.



TERESA NOVAKOVICH

Teresa Novakovich is the new South Central AHEC director within the host organization of the Alaska Primary Care Association. Teresa started with the South Central AHEC in 2017 as administrative support staff. Her duties have grown both in complexity and responsibility working as a health education coordinator, pipeline programs manager, and now director. Before coming to AHEC, Teresa managed the personnel and accounting for her family owned business. Teresa will graduate from UAA in May of 2022 with a bachelor's degree in sociology.

We are happy to welcome Teresa to her new role as director. Her experience as a professional photographer and being a long-time Alaskan will be an asset. She enjoys teaching, traveling, learning new things, and being a grandmother.



NORTHWEST AHEC

Vince Villella, Center Director
NW Alaska AHEC
vincent.villella@bssd.org

INTERIOR AHEC

Whitney Paolino, Center Director
Interior Alaska AHEC
Whitney.Paolino@tananachiefs.org

YUKON KUSKOKWIM AHEC

Naomi Digitaki, Center Director
YK AHEC
naomi_digitaki@ykhc.org

SOUTH CENTRAL AHEC

Teresa Novokovich, Center Director
SC Alaska AHEC
teresan@alaskapca.org

SOUTHEAST AHEC

Mary McEwen, Center Director
SE Alaska AHEC
marym@serrc.org

SOUTHWEST AHEC

Amy Carlough, Center Director
SW AHEC
amyc@apiai.org

While successful at connecting students to a wealth of resources, the Program Office still sees room for growth in its outreach to rural and underserved communities. In an effort to expand this outreach, the focus of the next few years will be upon the rollout of a high school course intensives for 11th and 12th grade students in rural communities. This career and technical education program of study (CTEP) pathway was developed in partnership with the State of Alaska Department of Education and Early Development, adheres to high school state standards, and is modeled to complement University of Alaska curriculum. Over the course of two years, students will be exposed to different healthcare careers, learn medical science content, engage in hands-on activities, obtain nationally recognized certifications, and reflect on their relationship and other communities' relationships with healthcare. Crucially, it will also connect these students to the Rising and AHEC Scholars programs. In doing so, the pathway will formalize the Alaska AHEC's own pipeline and center it around the needs and desires of these rural students.

Introducing Alaskan students to healthcare careers at a young age is paramount if Alaska's communities desire is to create a sustainable healthcare workforce that is both locally and culturally informed. The Alaska AHEC's CTEP pathway is designed to meet this need by leveraging the organization's networks and resources and extending support to younger students.

IMAGINING NEW FUTURES

2021 programming clarifies need and motivates the development of 11th and 12th grade healthcare curriculum for rural communities

In 2020 the AHEC program office selected a cohort of students for an exciting new pilot program: the Rising Scholars. This program was born out of a desire to recruit students from rural and underserved backgrounds and to support students who were interested in healthcare careers but ineligible to become AHEC Scholars. Learning from the successes and failures of the program, Alaska's AHEC is building upon the Rising Scholars pathway by creating intensives for 11th and 12th grade students in rural communities.

The Rising Scholars pilot program has connected students, who otherwise may have seeped through the cracks of a leaky pipeline, to a supportive professional network of current and future healthcare providers. Most prominently, this is exemplified in the Rising Scholars mentorship program which paired students with current and alumnus AHEC Scholar mentors. The mobilization of these generous mentors has been both a fundamental component of the Rising Scholars program and suggestive of a larger success— the success of Alaska's AHEC in creating a network of responsive and civic-minded healthcare workers.

If you are interested in our CTEP pathway, please share your contact information at this <https://bit.ly/3gf3MD8>.



HEALTHCARE CAREER CAMPS GROW

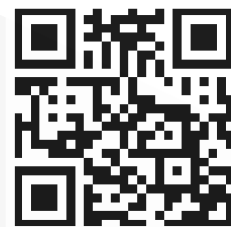
New high school partnerships empower students to explore healthcare professions and expand their professional networks

This December, 16 high school students from the Alaska Middle College School (AMCS) came to a three-day career exploration intensive while on winter break. The first event put on by AHEC for the AMCS, this camp emphasized experiential learning and connected students to UAA and WWAMI faculty and staff. Despite COVID-19, the Program Office of Alaska's AHEC is expanding its partnerships and empowering students with experiences and professional networks.



This career exploration camp could not have been accomplished without the help of UAA professors and students. With their help, students toured a virtual dissection table, the Human Performance Lab, the Physical Therapy Aid Lab, and Dr. Martinson and Dr. Kullberg's cancer research lab. When writing thank you notes, the students included the hands-on activities at the PTA lab and the introduction to laboratory equipment in their list of favorite parts of the camp. Additionally, feedback from students reiterates the importance of hands-on, interactive offerings such as field trips and suturing lessons.

If you are interested in volunteering in future camps, donating medical tools such as suturing instrumentation, or inviting students for a facility tour, share your contact information at <https://bit.ly/3HmuJAP> and join the group that is giving back to the future healthcare workers of Alaska.



"I thought this was a great program ... to not only explore different fields of healthcare, but to make connections at UAA (ex. WWAMI)."

-AMCS Student and Camp Attendee

AHEC SCHOLARS

GOAL

AHEC Scholars is a nationally recognized two year interdisciplinary program for health professions students within two years of graduation. The goal of the AHEC Scholars Program is to prepare a diverse, culturally competent primary care workforce, improve workforce distribution throughout Alaska, particularly among rural and underserved populations, and develop a workforce prepared to deliver high quality care in a transforming health care delivery system.

ACTIVITIES

AHEC Scholars learn together as interprofessional teams, completing both didactic and clinical training over and above their regular curricula with a focus on preparing them to care for Alaska's medically underserved populations. Each year of the two-year program, students complete 40 hours of didactic training and 40 hours of team-based community service learning. These hours of community learning include providing care to vulnerable and underserved patients in rural Alaskan settings such as homeless shelters, rural health clinics, Alaska Native/Tribal facilities, community health centers, health fairs and more.

AHEC Scholars enhance their knowledge and competence in the following core areas:

- Interprofessional Education (IPE)
- Behavioral Health Integration
- Social Determinants of Health
- Cultural Competency
- Practice Transformation
- Virtual Learning & Telehealth
- Connecting Communities and Supporting Health Professionals
- Current and Emerging Health Issues

CLASS OF 2021 SCHOLARS

- 43 students completed their requirements and graduated from the Scholars program in 2021
- 100% of students felt more prepared for further health education as a result of the program
- 93% reported an increased level of knowledge in all core topic areas
- Likelihood to work:
 - Rural- 70%
 - Urban underserved- 58%
 - In Alaska- 88%

SCHOLARS GRADUATE TESTIMONIALS

"This program encouraged and rewarded me for engaging in learning outside of the classroom, which put me far ahead of other students in my program."

The community connection was the most valuable portion of the program for me. AHEC created a platform I was able to utilize to connect with a variety of healthcare and public health professionals in Alaska. The community support gained from being in AHEC is immeasurable."

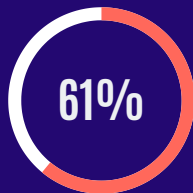
"The chance to experience health care in rural Alaska is what initially interested me in the AHEC scholars program. In March of 2020 AHEC facilitated a trip for me to Kotzebue, AK. It was beyond my wildest dreams!"

"I received training in topics that I wouldn't have seen anywhere else, and I feel SO much more prepared to become a competent health professional."

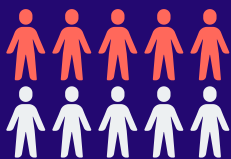
"Through [my CBEL] experience, I better learned how to communicate with and treat those from underserved populations. I was able to see how substance abuse and certain disease processes directly impacted individuals."

ALASKA'S 2021-2022 AHEC SCHOLARS

84
active Scholars



of AHEC Scholars are racially diverse or from a disadvantaged background



5 in 10 AHEC Scholars are from a rural background

Graduate

Medical School	9
Occupational Therapy	6
Nursing	5
Social Work	4
Pharmacy	3
Physician Assistant	1
Other Behavioral Health	6

Undergraduate

Nursing	35
Certificate programs	6
Allied Health	5
Other undergrad	4



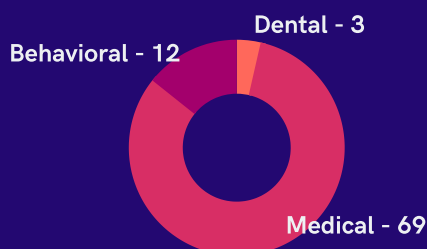
Female



Hybrid
Academic program is part in-person, part online



Full-Time



SCHOLARS LONG-TERM TRACKING

Scholars graduates are surveyed a year after they graduate and complete the program. Of those for who responded:

100% are currently in or still pursuing a health career

29% working in primary care

46% working in a medically underserved setting

21% working in a rural setting

Scholars graduates are working all over Alaska!

Facilities that Scholars alumni are currently working at include

- Alaska Native Tribal Health Consortium
- Anchorage School District
- Mat-Su Regional Medical Center
- North Star Behavioral Health
- Kodiak Island Borough School District
- Petersburg Medical Center
- Alaska Primary Care Association
- and more.

CONTINUING EDUCATION

As was first highlighted in the 2020 Annual Report, the Alaska AHEC has continued not only facilitating the training of COVID-19 Contact Tracers statewide but also housing a fully remote workforce. Over 1,480 contact tracers have been trained since the course launched. Of those trained, over 1,000 have been hired by UAA and other community partners. The UAA workforce expanded to meet community and statewide needs including statewide cluster management, staffing the Your Local 211 resource hotline, and administrative support at popup vaccination sites on an as-needed basis. Currently, the Contact Tracing workforce is wrapping up operations with plans to fully close the workforce by March 31, 2022.

The partnership with the State of Alaska Division of Public Health to facilitate Contact Tracing training expanded into offering additional public health education. The last half of 2021 was dedicated to developing a course addressing vaccine hesitancy. The Training to Improve Vaccine Confidence in Alaska Communities launched January 31, 2022 and was developed with the College of Health Master of Public Health faculty. The training is offered as two courses, one designed for licensed providers and one for community members, students and unlicensed providers. The provider training has continuing education contact hours co-provided by the Alaska Native Medical Center Interprofessional Continuing Education (IPCE) program. Registration is open for the [Provider](#) course or the [Community](#) course now through June 2022!

In addition to these courses the AHEC co-provided 41 other professional development opportunities, many offered with continuing education contact hours. Highlighted topics for 2021 include:

- Geriatric Education
- Mental Health First Aid
- Complex Trauma IV
- Updates for Reproductive Health in Rheumatic Disease Series
- Wellness through Equity & Healing-Centered Engagement
- Compassion Fatigue

41

Number of Events

82.25

Continuing Education Contact Hours

7305

Attendance

152

Total Contact Hours

RESILIENCE RECOVERY PROGRAM

The Alaska AHEC is proud to announce a new set of program offerings through the COVID-19 Resilience Recovery Program. With a focus on restoring wellness to frontline workers across the state, and building primary resilience in students entering the field of healthcare, the COVID-19 Resilience Recovery program seeks to bring immediate relief to those experiencing acute burnout and compassion fatigue. Through a wide array of services, including 1 and 2-hour seminars, seminar and webinar series, support groups, team and leadership retreats, and 3, 6, and 12 month employee retention programs, the COVID-19 Resilience Recovery Program can be tailored to fit the needs of any organization or team. The program is built on the philosophy of Relational Leadership Theory, espousing that the objective truth of any organization is created by the people that comprise that organization and the interactions between them. We bring resilience rescue through a focus on increasing presence through self-awareness, strength through coping skills, and connection through boundaries. Work can be done at every organizational level to establish a culture of wellness that is authentic to the team creating it. The Alaska AHEC is scheduling services today, so please contact us for more information!

Thank you for your service!

On June 30, 2021, Education Network Manager Pat Sammartino retired from UAA after over 10 years of employment with the AHEC Program. Pat was instrumental in the development and implementation of Continuing Education Programming. She was known as the "CE Guru" due to her extensive knowledge regarding all things related to healthcare continuing education. Pat had an innate ability to build and maintain strategic partnerships on a local, state and national level. She spearheaded training in veterans health, HPV vaccinations, geriatrics, forensic nursing and contact tracing (to name a few). Pat was always willing to lend a helping hand and enjoyed sharing her love for the State of Alaska with others, most notably our Rural Immersion Institute of the North (RIIN) students whom she took under her wing for Alaskan adventures. Pat is currently enjoying retirement with her husband Carlo as they explore the Lower 48 in their brand new truck and travel trailer. Thank you Pat for your decade of service and best of luck to you in your future adventures.



Pat Sammartino

SOUTHEAST AHEC: YAKUTAT SPEAKER SERIES

In the first week of December, the Southeast Alaska AHEC held a weeklong virtual speaker series with the students in the Health class at Yakutat School. This marked the AHEC's first activity in this community. As part of the series, students were introduced to a wide range of health careers ranging from behavioral health, to nursing, to medicine, to allied health. Students then had the opportunity to hear from current and future healthcare providers from communities in Southeast and around Alaska. As such, they became connected to a range of professionals from different provider organizations across the region.

Students connected with health professionals doing Emergency Response with Capital City Fire and Rescue, ER Nursing and Behavioral Health with Bartlett Regional Hospital, Flight Nursing with Airlift Northwest, and Social Work with the Rainforest Recovery Center. They also spoke with a current WWAMI student, who talked about how his future career as a doctor would allow him to serve in the community in which he grew up.

During this speaker series, the students were able to learn and ask questions about the range of fields, schedules, passions, skills and lifestyles that came with each career. Following the program, a student remarked, "It was really interesting to see how far health careers stretched out".

SOUTHWEST AHEC: HEALTH CAREER CAMPS

Like all the Alaskan AHEC Regional Centers, the Southwest AHEC offered Allied Health Career Camps and Behavioral Health Career Camps in 2021. The purpose of AHEC Health Career Camps is to introduce high school students to the wide variety of careers available in the sector by leveraging the expertise of health professionals in the community. The Health Career Camps inspire and nurture students' curiosity to learn about the field through various hands-on activities, learning simulations, daily career speakers and lecture series. Career planning resources are also available to students throughout the duration of the camp via VirtualJobShadow, a powerful career exploration platform with interest assessments, professional development lessons, college search and over 1,000 professionally-produced job shadowing and career advice videos. These interactive tools help students and job seekers develop career paths based on choice, not chance. Students will leave with a better understanding of how to find a career path and the steps required to succeed.

"I learned a lot about CPR BLS and more about the career I'm interested in." - Alexandra Esnardo

"I think the camp was great." - Henry Kushin

"Learning about social workers and counseling were my favorites. But all the presentations were very informative and helpful." - Carly Eldridge

The Southwest Alaska AHEC continues to seek and apply for new funding opportunities to enhance services across the region. We are grateful for the current partnerships that have developed with existing activities. Our programming could not be as vast and effective without our partner organizations in the Bristol Bay area. Their support and services are vital to reaching the long-term goals of the Alaska AHEC Program.

Qağaasakung (thank you)!

Please visit APIA's new AHEC page! www.apiaia.org > Services > Health Care > Alaska's Southwest AHEC Program

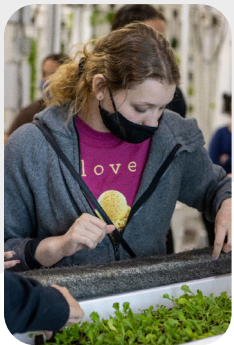


Example of a student's final project.

Southwest AHEC is seeking individuals who are interested in assisting with future youth prevention programming efforts in the Aleutian Pribilof Islands and Bristol Bay region. If you are interested in joining other like-minded community members on this cause, please contact Olivia Bridges at oliviab@apiai.org.

SOUTH CENTRAL AHEC: EXPLORE CAMPS

“... [Explore Camp] is a wonderful opportunity and if I had the chance to learn all over again, I would definitely choose this program.” This is a quote from one of the students who participated in the South Central Alaska AHEC’s Winter Explore Camp that was held in December 2021. Explore Camps are healthcare career exploration camps for Alaskan youth ages 15-18. These camps provide quality educational experiences, introduce healthcare career opportunities, and create a safe space for students to connect – with instructors, with each other, and with nature. Explore Camps promote a holistic approach to health and wellness.



Behavioral Health Camp,
Anchorage, June 2021

The SC AHEC team held ten high school camps in 2021 and had approximately 88 students who participated. These camps offered certifications including First Aid/CPR/AED, BLS, Teen Mental Health First Aid, Bloodborne Pathogens, and Mandt Training.

The impact of these camps goes beyond preparing students for healthcare careers. During the Winter Explore Camp held in

Anchorage, students crafted handmade blankets as part of an Art Therapy project. The students donated the blankets to Covenant House Alaska, a non-profit organization that serves homeless, at-risk, and trafficked youth in Anchorage. Students appreciated participating in a hands-on learning activity and being able to make a positive contribution to other youth in their own community.



Explore Camp, Soldotna, June 2021

Additionally, students who participated in the Wellness Camp in August took the initiative to create a student-led club, called the Sprouting Spirits Club. Topics being addressed and explored in this club include healthcare pathways, improving the environment, mental health, and building leadership and communication skills. Students meet about once a month and have done all the recruitment and planning for meetings and activities themselves.



Behavioral Health Camp, Anchorage, June 2021

It is with mixed emotions that we say goodbye to Mari Selle, the South Central Alaska AHEC Director. In a little over six years, Mari grew the SC Alaska AHEC organization from a staff of one to a powerhouse organization in healthcare workforce development leading 16+ staff members. She was instrumental in developing healthcare pre-apprenticeship and apprenticeship training in the state of Alaska. Her passion and advocacy for health and wellness will have a positive impact for years to come in communities across the state.

Mari has accepted a position as Chief of Staff with the Alaska Primary Care Association. Though she won't be far, her presence and leadership will be missed.

Mari, Alaska's AHEC is glad to have had you, and we're grateful for your contributions to the organization. May your new position bring you much happiness and fulfillment!



NORTHWEST AHEC: DUAL-CREDIT CLASS

In FY 2021 NW AHEC reached 194 students, both adult and youth, with health care career aligned training and classes. As an inaugural year for Vincent as director and the first year for the center to be based in Nome, the NW AHEC focused on new programming in the Nome region and providing support to the region to aid partners in like-minded projects. They continue to form new partnerships across the Northwest region, strengthen existing partnerships and secure additional and new match funding. COVID safety concerns created the need not only for additional virtual training but also for new and creative learning opportunities in general.

A highlight for the center this year was the creation of a Nome-based dual credit class. The class, Introduction

to Health Careers, provided high school students in the region with a chance to explore health careers and the skills that are needed in this field. Plans are in place to offer more dual credit classes co-taught with health professionals from Norton Sound Health Corporation. Long term plans involve creating a high school level certificate that can be offered to students who complete a certain number of allied health/behavioral health classes and complete an internship with a local provider.



INTERIOR AHEC: NEW PARTNERSHIP WITH TANANA CHIEFS CONFERENCE

The Interior AHEC has a new host organization, Tanana Chiefs Conference (TCC), an Alaska Native non-profit corporation that also provides outpatient health services to Indian Health Service beneficiaries for the Interior region. TCC and Interior AHEC determined three main goals for their partnership starting point: providing CE opportunities for TCC health staff, supporting TCC's current student services, and exploring opportunities to expand TCC's health workforce.

A large group of TCC staff participated in the Program Office's Adverse Childhood Experience (ACEs) workshop in June 2021. AHEC and TCC will be providing ACEs workshops for the Interior region, a big investment in the mental and emotional health of both youth and adults.



TCC has been an important partner in providing clinical rotations and job shadowing for many years. With the addition of the Interior AHEC office to support these student services, students now have the opportunity to accompany their preceptor on village trips. This will expand the student's clinical experience, help them become more comfortable practicing medicine in rural villages, immerse students in rural life, and offer students the chance to consider rural practice as part of their career.

The Interior AHEC and TCC continue to collaborate on productive ways to mutually benefit and fill the regions' health workforce needs. The first year of this collaboration has highlighted that we are indeed stronger together.

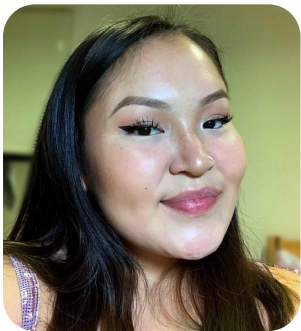
YUKON-KUSKOKWIM AHEC: SUPPORTING LOCAL STUDENTS

The YK-AHEC is proud to have concluded another year of supporting local students in their health education and budding careers. They were able to continue to provide support to resident physicians and students on clinical rotations throughout 2021, thanks to the support of YKHC's HR/Workforce Development Division. Dental, Optometry, and Pharmacy are the most popular specialties and the program plans to expand the number of students, preceptors, and specialties in 2022.

In late 2021, AHEC worked closely with CHAP and partners YUUT and AVCP to increase the number of candidates in the Community Health Aide Trainee pipeline to serve communities in the YK Region. It is encouraging to see the increase in trainees due to the concerted, ongoing effort by CHAP, YK-AHEC and community partners.

The Work Based Learning (WBL) program is back on track following the pandemic and high schools are scheduled to begin their WBL experience in Q1 2022. Raising awareness of health careers and supporting students through scholarships, internships, rotations, and placement in health careers continue to be focus areas.

Below are three inspiring students from the YK Region who are paving the way for aspiring health professionals.



Mikayla Kassaiuli (Yup'ik name Ayapan)

Newtok, AK

Dental Health Aide Therapist student.

I'm proud of being part of the DHAT program as I gained new skills and increased my career knowledge. I've always enjoyed working in the dental field and I'm thankful to be in the Alaska Dental Therapy Educational Program (ADTEP). My advice for anyone who wants to further their education is keep going and strive for success. Doesn't matter where you come from, you can still do it! My mom once told me, "If it doesn't help you in the short run, then maybe it's time to do something for the long run."



Tamija Woods

DHAT Provider, UAF Graduate- Masters of One Health

As a DHAT provider, I share as much knowledge as I can with my patients to do their part in their oral health and hygiene. It is my hope and desire to see our people be healthy and do their part in taking that step. As a successful young Native female, I would like to inspire and encourage others in my generation and the following generations to dream big and make your dreams come true. Nothing is impossible. There are many positive role models that can help guide and share helpful tips. It is my desire to always be a strong advocate in helping others learn and set goals for themselves.



Amber Bukowski

Chevak, AK

Nursing, KUC

I am pursuing a nursing career because I want to inspire others to follow their dreams and career ambitions. If I can do it, so can you! I would like to see more people from our region grow into career paths and make a difference. I want to encourage and influence homegrown, local people to take the steps and begin and/or continue their journey into leadership positions and health professions careers. Working for our people and inspiring others to do the same is something that I am passionate about.

Education opens doors. I would love to see others start on their pathways as well. If you have not started and/or you're thinking about it, begin today! Anything is possible! You can do it.

STEERING COMMITTEE MEMBERS

JOHN MCCARTHY

WWAMI AHEC Director, Regional Affairs and Rural Health
(WWAMI Rep), University of Washington, School of Medicine

SHEILA BOX

State CTE Administrator, AK Career and Technical Education, State of
Alaska, Department of Education & Early Development

RAHNIA BOYER

Vice President, Village Health
Yukon Kuskokwim Health Corporation

TRICIA FRANKLIN

Health Program Manager III, Office of Healthcare Access,
State of Alaska Division of Public Health

NATHAN DAHL

Administrator, Maple Springs of Alaska

TERRI DOUGHFMAN-BILLING

Assistant Director of Nursing, Maniilaq Health Center

BARBARA DOTY, MD

Assistant Dean, Alaska WWAMI Regional Affairs, UW School of Medicine

VERNÉ BOERNER

President/CEO, Alaska Native Health Board

TARA FORD,PHD

Community Health Services Director. Aleutian Pribilof Island Association

PATTY LINDUSKA

Sr. Director of Training & Technical Assistance
Alaska Primary Care Association

JEANNIE MONK

Senior Program Officer, Alaska State Hospitals and Nursing
Homes Association

CARLA HAGEN, PHD, MPH,RN

Director, School of Nursing

RITA KITTOE

Director, RRANN

DOUG WALRATH

Director, NACTEC

CHRISTA GACKSTETTER

Clinical Staff Office Director, Tanana Chiefs Conference

SHERYL WEINBERG

Executive Director, SERRC

DALLAS HARGRAVE

Director, Human Resources, Bartlett Regional Hospital

Continuing Education Opportunities

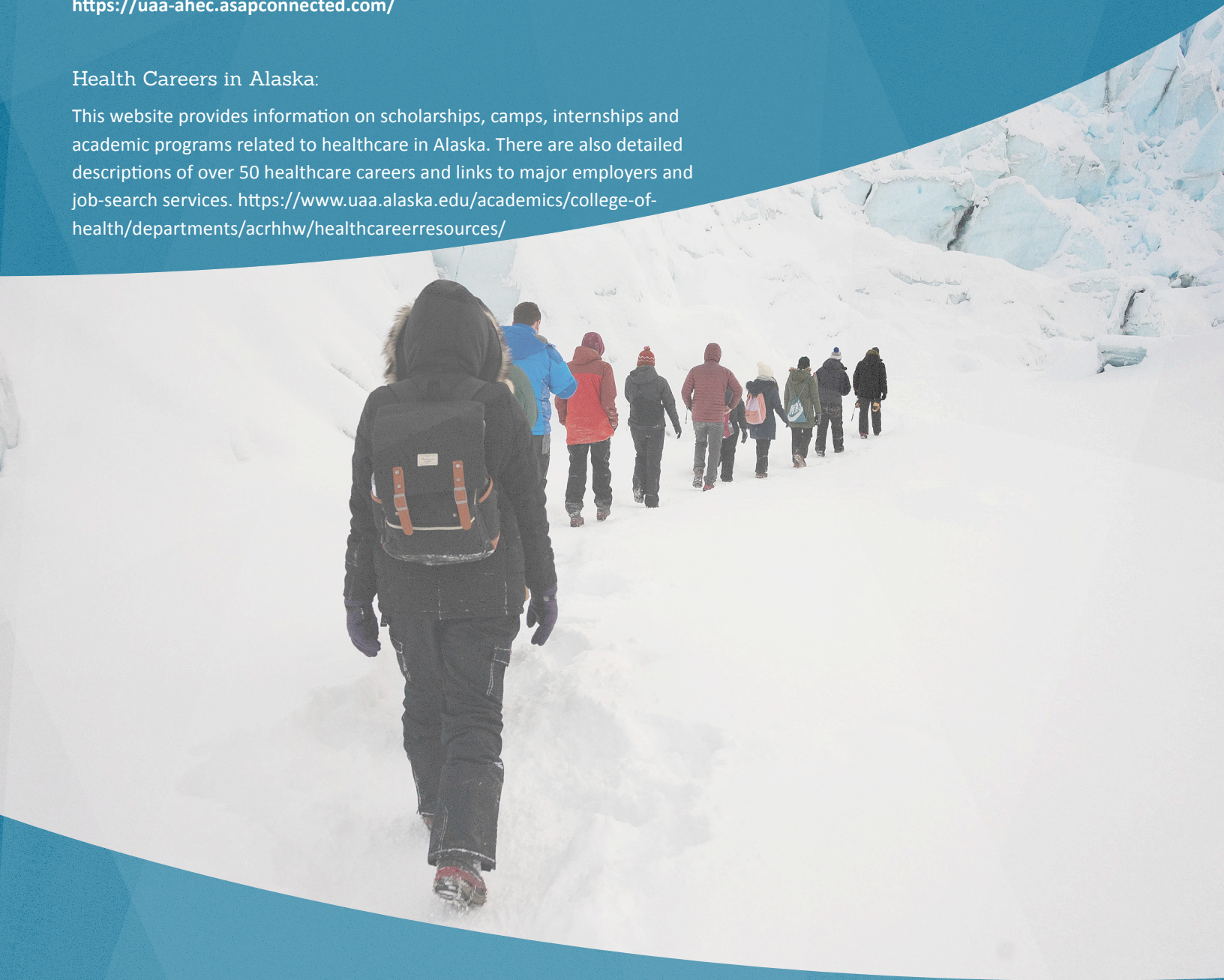
Alaska AHEC works with the UAA College of Health and our partners to offer continuing education credits for healthcare professionals across Alaska. You can find a list of course offerings as well as registration instructions at <https://uaa-ahec.asapconnected.com/>



UAA College of Health
UNIVERSITY of ALASKA ANCHORAGE

Health Careers in Alaska:

This website provides information on scholarships, camps, internships and academic programs related to healthcare in Alaska. There are also detailed descriptions of over 50 healthcare careers and links to major employers and job-search services. <https://www.uaa.alaska.edu/academics/college-of-health/departments/acrhhw/healthcareerresources/>



UAA Alaska Center for
Rural Health and Health Workforce
UNIVERSITY of ALASKA ANCHORAGE



Find us on YouTube!

Phone: 907-786-6705 // Fax: 907-786-6511 // Email: uaa_ahec@alaska.edu // AHEC Website: www.uaa.alaska.edu/ACRHHW/



The AHEC program is made possible through support provided by the University of Alaska, Anchorage / Anchorage Center for Rural Health and Health Workforce -Alaska's AHEC, and HRSA # U77HP23073.

UA is a AA/EO employer and educational institution and prohibits illegal discrimination against any individual: www.Alaska.edu/nondiscrimination.