



RUBY COMMUNITY PLAN



2015

Table of Contents

VISION 4

EXECUTIVE SUMMARY..... 5

 PAST COMMUNITY PLANNING EFFORTS..... 6

COMMUNITY PROFILE 7

 HISTORY AND CULTURE..... 8

 LOCATION 10

 POPULATION 11

GOVERNANCE..... 12

 RUBY TRIBAL COUNCIL..... 12

 DINEEGA CORPORATION 13

 CITY OF RUBY 13

 VPSO/LAW ENFORCEMENT..... 13

 COLLABORATION..... 13

 REGIONAL CORPORATION: DOYON..... 14

 REGIONAL NON-PROFIT CORPORATION: TANANA CHIEFS CONFERENCE..... 14

PUBLIC UTILITIES 15

 WATER AND SEWER..... 15

 SOLID WASTE 15

 COMMUNICATIONS 16

 POWER/ENERGY..... 16

PUBLIC FACILITIES 18

 MUNICIPAL BUILDINGS 18

 EMERGENCY SERVICES 18

 ALTONA BROWN HEALTH CLINIC..... 19

 POST OFFICE..... 19

 PUBLIC PARK 19

 MERRILINE A. KANGAS SCHOOL 20

 RUBY WASHETERIA 21

 COMMUNITY HALL 21

 TEEN CENTER 21

COMMUNITY WELL-BEING..... 22

COMMUNITY EVENTS	22
COMMUNITY PROGRAMS	23
CHURCHES	23
LOCAL SAWMILL	23
ECONOMY	24
LOCAL STORES AND BUSINESSES	24
COMPOSITION OF EMPLOYMENT	25
HOUSING	26
TRANSPORTATION	27
EXTERNAL TRANSPORTATION.....	27
INTERNAL TRANSPORTATION	28
LAND USE AND ENVIRONMENT	29
LAND OWNERSHIP	29
ENVIRONMENTAL CONCERNS	29
SUBSISTENCE	30
COMMUNITY PRIORITIES.....	32
APPENDICES.....	40
REFERENCES	51
RESOLUTION	53

VISION

We the People of Ruby desire to preserve and promote a healthy village and traditional cultural values:

Through cooperative efforts, we can create employment and economic opportunities; improve public and private facilities; better educate our own people, and manage our natural resources in a holistic way.

We must be resilient and adaptive to social & climate change. To adopt alternative energy, agriculture and environmentally sustainable community development reflective of our tribal resolutions for a prosperous and healthy future for 7 generations.

EXECUTIVE SUMMARY

The history of Ruby has been one of boom and bust since its founding in 1907. The real possibilities of steady economic growth for the future are enhanced by a Memorandum of Understanding with the City of Ruby, the Ruby Tribal Council and the village Dineega Corporation. The memorandum helps create unity by working together for the health of the community and promoting beneficial economic growth with the establishment of a roadmap for future economic development projects and programs through a Comprehensive Economic Development Strategy plan (CEDS) providing guidance to the community for long-term stability.

The creation of this CEDS roadmap will benefit the residents of Ruby immensely and enable local residents to maintain the beauty of their small community while helping create economic and employment opportunities for local residents. This planning process will also enable the Tribal Council capture revenue now derived from the use of resources on Tribal land but that now bypasses the community of Ruby going entirely to outsiders.

The people of Ruby are one of its greatest assets; they want to ensure a good future for their children. The warmth and good feelings of the people of Ruby brings others to the area by word of mouth alone. Ruby Tribe has drafted a tourism implementation plan for generating economic income and trade within the next few years. Ruby has much to offer and is ready to begin the sustainable development that will bring outside income into the community.

This plan was compiled for the Ruby Tribal Council in 2014. The Tanana Chiefs Conference Village Planning and Development (VP&D) Program assisted with the development of the plan. Through the VP&D Program, local resident Ed Sarten, was hired by TCC and the Ruby Tribal Council to research, update, revise, and create new goals for our community plan. Information included in this plan is based off of interviews with community members, mass surveying of residents, community meetings, and reviewing past plans.

PAST COMMUNITY PLANNING EFFORTS

Tanana Chiefs Conference was involved in creating a draft Community Plan in 2010, at which time a community meeting was held on August 24, 2010 to gather comments from the community and update them on the progress that has been made on the planning process. That plan was never completed and formally adopted by the tribal council. However the information collected as a part of that planning effort has helped in creating the 2014 Community Plan.

Ruby completed a Community Plan in 2003 in partnership with the Tanana Chiefs Conference Planning and Development Department. The community meetings spanned over a few months. Updated and revised information was provided by the City of Ruby and the Ruby Tribal Council. Participants of those meetings included the President of the Council Donald Honea Jr., Council employees: Patricia Gustafson, Robert Cleaver, and Laura Vines; Community members: Eileen McGlynn, Ed Sarten, Annie Honea, and Dawn Greenway.

Ruby held a public meeting on April 24, 2007 to discuss the needs of the transportation in Ruby. On July 25, 2007 the community of Ruby gathered together to further develop goals for the community. Many goals outlined in that plan have been accomplished.

In 2009 the Ruby Tribal Council, Ruby City, Dineega Corporation, and Merrelaine A. Kangas School entered into a Memorandum of Understanding to work together to facilitate the growth of the community of Ruby.

Ruby has a Tourism Implementation Plan for economic development and the Yukon Access Road Plan will open our area to the outside population, and we will need to enforce these codes for the benefit of our community.

As one local resident said, "Ruby is the greatest place in the world to live but I think we can make it even greater."

COMMUNITY PROFILE

HISTORY AND CULTURE

There were originally 12 summer fish camps located on the Yukon River between the Koyukuk River and The Nowitna River maintained by Koyukon Athabascans of the Nowitna Koyukuk Band, a nomadic group who followed fish and game with the changing seasons.

A gold strike at Ruby Creek in 1907 and one at Long Creek in 1911, brought hundreds of non-native prospectors to the area. At one time over 1000 non-native miners lived in Ruby, Placerville, Poorman, Sulatna Crossing, Kokrines and Long Creek, with small mining camps everywhere. Ruby was incorporated in 1911 and a post office had opened in 1912. The largest gold nugget in Alaska was found close to Long Creek near Ruby in 1998 weighing 9.15kgs.



Fish Camp near Ruby, 1911. Photo Courtesy of Alaska Digital Archives



Ruby 1920s. Photo Courtesy of Alaska Digital Archives

Initially, the City was governed by miners meetings, then later by Pioneer Igloo Number 5. After the gold rush the population declined rapidly leaving Ruby just a little more populated than a ghost town of empty buildings and houses. In 1939 there were only 139 remaining residents with very few of those original residents left before the 1950s.

This opportunity opened more permanent housing and village life for the now much less nomadic Alaska Native population who now follow more economic opportunities, and less subsistence activities such as following the fish and game, plants and berries. Many native people in Ruby came from the native settlement of Kokrines and some from surrounding native villages and camps which increased the population of Ruby to approximately 200 people. Ruby incorporated to a second class city in 1973 .A clinic, water plant, school and electricity were constructed and available in the mid-70s and during the 1980s telephone and television were provided. By the late 90s internet had become available. By 2005 a new laundromat was constructed and in 2014 a new health clinic.



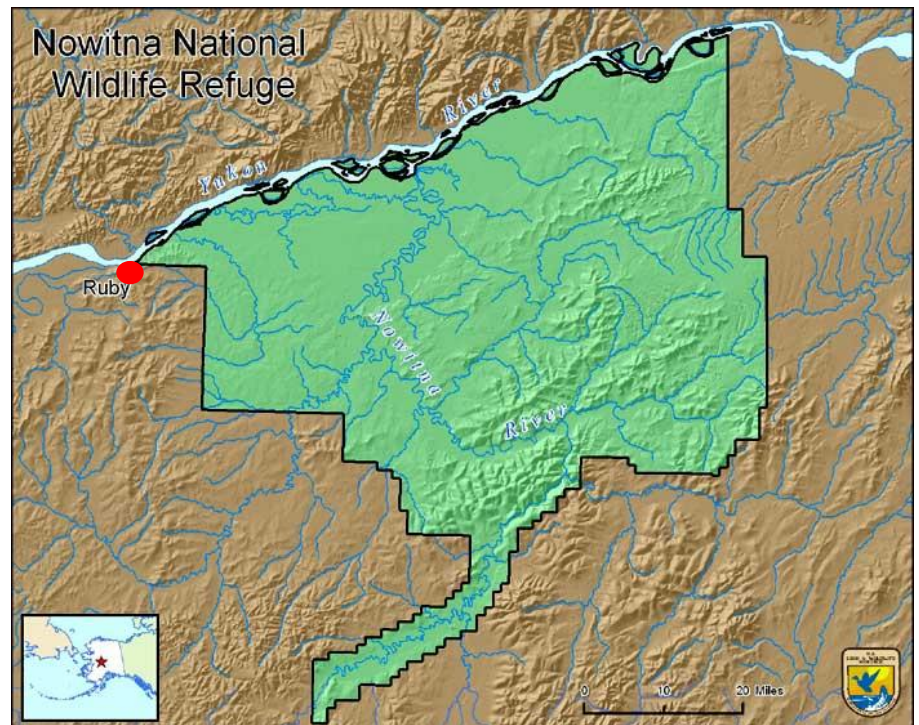
Ruby Main Street, 1930. Photo Courtesy of Alaska Digital Archives

LOCATION

Ruby is located on the south bank of the Yukon River near the Kilbuck-Kuskokwim Mountains. Ruby is about 50 air miles east of Galena and 230 air miles west of Fairbanks. It is located in the Nulato Recording District in an area that encompasses 7.6 sq. miles of land. Ruby's Latitude coordinates are 64 degrees 7394 North and Longitude 155 degrees 487 west. The average daily high temperature is in the 70s while in winter the average winter temperature in January is around zero degrees plus or minus and temperatures of minus 40 degrees are common for up to a week or more. Extreme temperatures have ranged from -60 degrees in winter to almost 100 degrees plus in summer. Snow and rain amounts can vary year to year and climate change is creating more unpredictable weather patterns and conditions in our area.



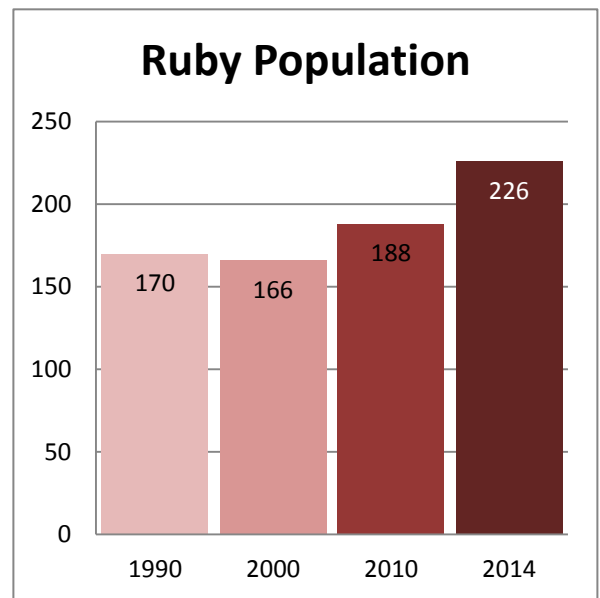
Ruby lies adjacent to the Nowitna National Wildlife Refuge which boasts 2.1 million acres of pristine wildlife. The Refuge consists primarily of the wetlands and boreal forests along the Nowitna River which flows into the Yukon River. The refuge provides ideal breeding grounds for migratory birds with its marshy swamps and shallow lakes. There is upwards of 120 different species of migratory birds that feed and nest on the Nowitna Refuge. The refuge is plentiful in fish and game including different species of salmon, grayling, pike, and whitefish. Large mammals include moose, bears, wolves, and lynx.



POPULATION

The 2010 U.S. Census recorded the local population at 188 people. Knowing this number to be inaccurate of the true population the Ruby Tribal Council conducted a survey in November 2014, which gave a recent population count of 185, with more people returning for holidays in December. This reflects a growing population due to people moving back home, new residents moving into the community, and new births.

There has been an upward trend in Ruby’s population. According to the US Census in 2000 residents identified themselves as: 156 Alaska Native, 26 Caucasian, 6 Mixed Race and 1 Japanese. Due to the high number of residents classified as “Alaska Native” the Ruby Tribe provides services to a majority of the population (approximately 86%).



GOVERNANCE

RUBY TRIBAL COUNCIL

The Ruby Tribal Council consists of a seven member council, a Tribal Court, and ten employees. The council serves three year terms that are staggered for re-election every two year. Council members meet every month to discuss current grant proposals, programs, mitigating tribal issues, and relevant information sharing. The Tribal Court consists of elected board members and the Traditional First Chief. Their terms of service end when their council member term ends. In 2014, the Tribal Council updated and adopted new codes of operation. The staff works in the tribal office and run programs including:

- IGAP Program
- Consolidated Tribal Government Program
- Tribal Transportation Program
- ICWA
- Family Violence Protection Program
- Tribal Workforce Development
- Natural Resources - Subsistence



Tribal Council meeting. 11/15/2014

Ruby's Tribal Constitution was passed in 1978. The most recent updates to the Ruby Tribal Constitution include the community's Codes and Ordinances made in 2008. Ruby Tribal Council has established codes to protect our cultural and natural resources and preserve our cultural heritage. Protection of artifacts and human remains, cultural use of fish, wildlife, vegetation, intellectual property, cultural places and property is addressed. Any research, information, photographs, and stories recorded by non-tribal members in and around Ruby need to pass Ruby Tribal Council approval before doing so. Any sharing of these resources should be compensated by non-tribal members to tribal members for this service.

The Ruby Tribe also has an active Tribal Court that hears Indian Child Welfare Act ICWA cases. A panel of three judges presides over each case. The panel of judges consists of Tribal Council members.

DINEEGA CORPORATION

As a result of the ANCSA land settlement, Ruby's village Dineega Corporation owns 115,000 acres surrounding the community. These lands are primarily used for subsistence activities, biomass harvest, and some mining. Staffing for the corporation includes three full-time employees and a president. There is no land management plan for corporation lands at this time.

CITY OF RUBY

The Ruby City office consists of seven board members and five staff. The board members serve three year terms, with staggering re-elections every two years. The city runs the local laundromat, community electrical plant, sewage lagoon, and partial oversight on the new health clinic. The staff consists of a city administrator, generator operator, laundromat maintenance, and custodian.

VPSO/ LAW ENFORCEMENT

The community does not have a Village Public Safety Officer (VPSO). As of 2014, Ruby doesn't have housing designated for the VPSO. The nearest Alaska State Trooper is located 52 miles away and is stationed in Galena. Local Tribal Government makes legal decisions in tribally enrolled client custody cases, domestic violence and trespassing violations.

COLLABORATION

In 2009, The Ruby Tribal Council, City of Ruby, Dineega Corporation, and Merrelaine A. Kangas School entered into a Memorandum of Agreement (MOA) for Economic Development. As of 2014, each party is interested in updating that agreement with a new MOA to reflect staffing changes. This cooperation has implemented the building of our new clinic and electric generator plant. A multipurpose building, an emergency response and VPSO program is still in the planning process. The Ruby Tribal Council and City of Ruby have a MOA which is specific to the new Altona Brown Clinic and the VPSO program.

REGIONAL CORPORATION: DOYON

Doyon Limited was established in 1971 as the regional for-profit corporation for the Interior Region of Alaska. Headquartered in Fairbanks, the 13-member Board of Directors employs 2,800 individuals with 19,000 tribally enrolled shareholders (Doyon Company Overview).



REGIONAL NON-PROFIT CORPORATION: TANANA CHIEFS CONFERENCE

Tanana Chiefs Conference (TCC) is the regional non-profit corporation for the Interior Region of Alaska. Established in 1962, the organization provides services to meet the health and social service needs of tribal members and beneficiaries of the 42 tribal communities in Alaska's interior (About Us: Who We Are).



PUBLIC UTILITIES

WATER AND SEWER

Ruby's water plant is owned and operated by the City of Ruby which provides water to the washeteria and watering plant. Many residents self-haul their water to small holding tanks from the main watering plant. Roughly 30 homes have individual wells and septic system. The city is able to pump septic systems with their septic tank truck. The cost of operating the water plant is a tremendous burden to the City; a possible solution would include biomass boilers, which would allow Ruby to utilize local timber and reduce its reliance on outside fuel.

The Merrelaine A. Kangas School has their own self-contained well system, which has untreated water.

SOLID WASTE

Ruby has a Class III landfill which is operated by the City of Ruby. Ruby's current landfill has reached its maximum capacity and no longer meets the needs of the community.

During a community meeting held in June 2010, constructing a new landfill and closing out the current one emerged as the community's highest immediate priority. Because of its great importance the community of Ruby has already begun preparations for building a new landfill site in anticipation of securing funding to do so. The Tribal Council identified the IGAP program as the lead organization to secure funding for a landfill design. Progress has already been made in identifying an appropriate site for the new landfill and nominating a new road to the site. The new landfill will be constructed during the summer of 2015.



Picture of current landfill at full capacity

COMMUNICATIONS

Yukon Telephone Company (offices located in Wasilla) provides telephone services through land lines to homes and provides internet. GCI provides cell phone services. In 2014, DRS installed two microwave towers near Ruby. The new towers will provide broad range fast internet for the community and will improve existing cell phone coverage.

POWER/ENERGY

BULK FUEL

The Dineega Fuel has bulk fuel tanks. The bulk fuel facilities received an upgrade in 2012 holding 100,000 gallons. The current cost of gasoline is \$7.00 per gallon. A bottle of Propane is \$220.00, and #1 oil is at \$6.00 gal. Fuel shipments for the community are delivered by barge from Nenana to Ruby twice a year. The primary source of heating for residents is a mixture of oil and wood usage.



Dineega Fuel Tanks

In 2012, City of Ruby did a bulk fuel renovation for the main electrical generator and it holds 7,000. The Dineega Corporation offers a discount price for the city to run the generator.

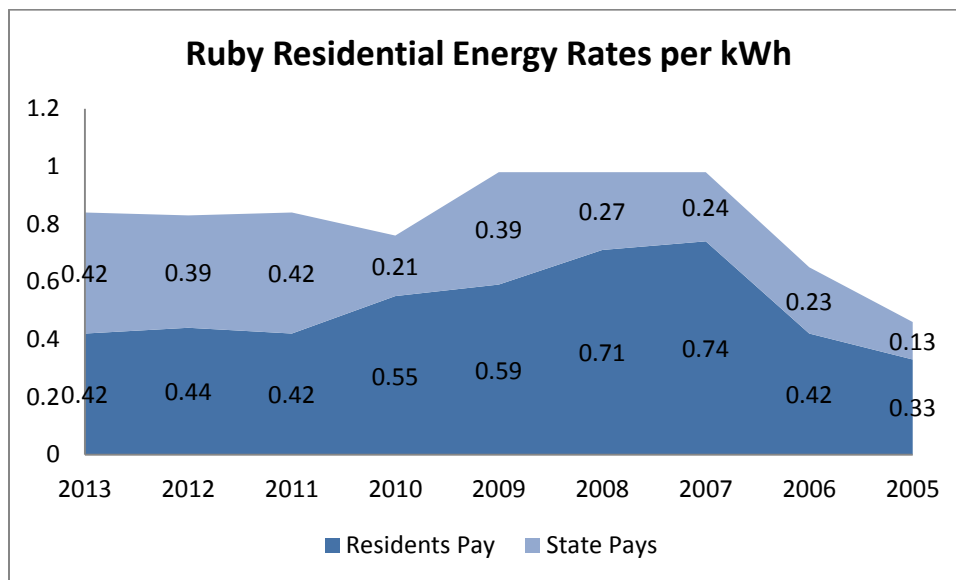
The Merrelaine A. Kangas School owns bulk fuel tanks which hold 14,500 gallons.

- Two bulk fuel containers for boilers (6,000 gallons each)
- 1,000 gallon reserve tank
- 5,000 gallon tank for bus barn
- 500 gallon tank for teacher housing
- 300 gallon for ski shop
- 55 gallon emergency generator

ELECTRIC

The electricity in Ruby is owned and operated by the City of Ruby. Power is generated by diesel generators. Current prices are 84 cents per Kilowatt/h which are down from .98 cents per Kilowatt/h.

The City of Ruby receives an energy subsidy from the State of Alaska Power Cost Equalization Program. The program is designed to assist local residents in offsetting the high prices of energy, which is common in rural Alaskan communities. The current PCE rate is approximately a little more than $\frac{1}{2}$ of the 84 cent kWh. The PCE rate changes often as fuel prices change. The following graph depicts the PCE and energy trends for the last decade.



There was a hydrokinetic turbine pilot project underway in Ruby that lasted 4 years (2008 to 2012). The turbine put power into Ruby's electricity grid and produced enough energy to power three homes. The hydrokinetic pilot project was being administered by the Yukon Intertribal Watershed Council and was the only one of its kind in the nation. The community of Igiugig is now experimenting with this technology. An installation of over 20 solar panels tied into our electric grid being utilized at our laundromat and new clinic to reduce diesel use at our new power plant. Waste heat from the generator helps to heat the laundromat, fire garage and clinic to offset heating fuel in those buildings. Ruby Tribal Council has a resolution and feasibility study to use a biomass heat source when it's applicable to new development or remodeling existing buildings.

PUBLIC FACILITIES

MUNICIPAL BUILDINGS

The city office is used primarily to hold public meetings and as office space for the city clerk. The Dineega Corporation owns the tribal council building, and the Tribal Council is currently renting office space. The current tribal office building doesn't have running water or outhouse facilities, so the tribal council staffers return home to use their personal facilities. The community also currently uses the tribal office building for sewing/craft nights, environmental education program, and U.S. Department of Fish and Game meetings. In 2014, the tribe received an ICDBG grant with the purpose of constructing a multi-use facility. The new facility will contain the new tribal council offices.



Residents using the tribal council building for craft night.

EMERGENCY SERVICES

As of 2014, the community has no formalized search and rescue response team. The tribe completed a Small Community Emergency Response Plan in August 2014. The plan establishes a community-wide emergency response so that a local disaster response will be faster, more effective, and more organized.

The community of Ruby has several pieces of equipment which help during times of emergency. The City of Ruby owns and operates the fire truck. In 2014, the city replaced the water valves in the truck which were leaking due to water freezing. The tribe owns and operates the ambulance, water truck, satellite phone, Search and Rescue radios, VHF (to communicate with airplanes), 2 gurneys, snow-machine, four-wheeler, and boat. The fire truck and ambulance are housed in the fire hall throughout the year which is own and maintained by the City of Ruby. The boat is housed near the washeteria during the winter months. The two-way radios and four-wheeler are housed at the tribal council office for regular use.

ALTONA BROWN HEALTH CLINIC

The Altona Brown Clinic provides the health services for the community. The clinic is named after the late Altona Brown, who was the last traditional medicine woman in the area. The current clinic was built in 2013, it is owned and operated by the Ruby Tribal Council. It was constructed through a partnership between the City of Ruby, Alaska Denali Commission, and Alaska Native Tribal Health Consortium (ANTHC). The city provides additional funding for maintenance.

TCC Community Health Aide Program (CHAP) provides funding for permanent health clinic staffers, two-full time and one part-time health aides. Health aides were hired February 2014 and are receiving additional training with the goal of eventually being able to see patients one-on-one. TCC also provides itinerant nurses and physicians which travel to the community frequently to provide additional services to residents. If an individual has a greater need for health care services beyond routine, a majority of residents are treated at the Chief Andrew Isaac Health Center, in Fairbanks.



Altona Brown Health Clinic

POST OFFICE

Post Office facilities are operated 5 days a week (9:00am-5:00pm). The post office is maintained by a staff of one person. Mail is received daily by air by Ravn Air.

PUBLIC PARK

The community has a small park downtown; located next to the Yukon River it has a covered picnic area and campground. The area is used mostly used by river rafters, travelers, and tourists. It utilized by community members for social picnics and barbeques.

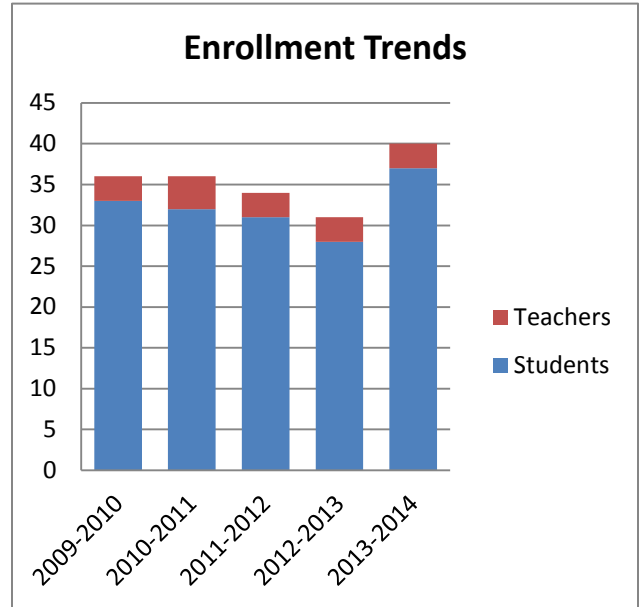
MERRELINE A. KANGAS SCHOOL

Merrelaine A. Kangas School was built in 1978. The school has 3 teachers and 37 students K through 12th grade. The school operates a breakfast and lunch program, Head Start, an archery program, seasonal culture camp, culture week, and gym nights. Other than what the school offers, there are no youth programs in our community. The tribe is working on further developing the existing teen center facilities for future programs and activities for youth.

In 2013, the community received capital improvement project funding for school renovations.

The Alaska Department of Education awarded Ruby \$6,791,484 to complete the project. A new playground was completed for the school in 2012. The new playground has slides, swings and monkey bars that meet current safety standards. In 2009, the school was also awarded a grant totaling \$421,367.00 for the construction of two new teachers housing units.

In 2014, Merrelaine Kangas School, Ruby Tribal Council and The U.S. Fish & Wildlife Service collaborated in the preparation of native plants and tree garden in front of the school. In August of 2014, lower grade students hand planted and transplanted shrubs and trees for the garden. In spring 2015, the garden will be expanded to include vegetables, which will be eaten in the school lunch program.



Merrelaine A. Kangas School

RUBY WASHETERIA

The Ruby Washeteria is open for public use all week-long from 10:00am-7:00pm. The current facility was built in 2005. The construction was funded through a grant from the Alaska Native Tribal Health Consortium (ANTHC). The facility features three showers, four washers and six dryers. It is staffed by one water plant operator 5 hours each day.

It is used by approximately 75 residents each week. Many of the residents are rely on the water services at the washeteria. The majority of the community doesn't have running water and those with private wells suffer from poor water quality due to high traces of iron present in local soil.

COMMUNITY HALL

The Ruby Community Hall was built in the mid 1970's and has no running water. In 2010, the building logs were restored and upgraded for weatherization purposes through the American Recovery & Reinvestment

Act (ARRA) grant-a one-time grant to stimulate the economy. It is used for public meetings, dances, cultural dances, potlatches, and funerals. The Community Hall is where most community events take place. However, the school gym is an alternative facility for performances or presentations.



Ruby Community Hall

TEEN CENTER

In the summer of 2014 Ruby Tribal

Council upgraded, weatherized, and painted the interior of our teen center. It is now open to public use after being closed for 12 years. Activities and events are being planned regularly for youth at the teen center. The Ruby Tribal Council Family & Youth Services Specialist is leading the planning effort for regular youth activities and events for the teen center, with volunteer support.

COMMUNITY WELL-BEING

COMMUNITY EVENTS

Most of our cultural events in Ruby revolve around potlatches. Potlatches are celebrations and feasts that can last for several days. The Potlatch ceremony is dedicated to deceased relatives, friends and or ancestors. Attendees sometimes travel hundreds of miles to the hosting community to bring food and gifts to share with families of the deceased. There is much sharing, feasting, playing traditional music and usually ending with a dance. Many years of preparation goes into planning a potlatch.

Other community events include the annual spring carnival; which welcomes the passing of winter. It is celebrated with dogsled and snowshoe races, games for the kids. Many people visit from neighboring communities, likewise many Ruby residents attend spring carnivals in neighboring communities, as they are all planned so they fall on different dates.

Ruby has a native youth singing and dance group which performs during major social events. Currently the group has been inactive for several years, so memberships and practices need to be reestablished. Ruby maintains the Athabascan tradition of Potlatches which are ongoing. Community members do skin sewing, beadwork, crafts ,preparing subsistence foods and cooking individually.

Fundraising in our community is usually done through raffles and events dedicated to the cause of raising money whether it be for emergency needs of a community member, a project or issue that needs more funding & help.



Ruby Spring Carnival

COMMUNITY PROGRAMS

The Tribe operates an education, employment and training program with BIA funds. The funding is utilized to assist tribal members with higher education scholarships, job placement, training or direct employment.

The Ruby Tribal Council has personal care attendants for our elders a few hours a week. They provide much needed help for elders in our community, assisting with daily chores and checking on their health needs.

Local Resident, Dwight “Ed” Sarten, is a certified nutritionist who is available for nutrition counseling for community members who would like to prevent or combat disease through healthy diet, nutrition practices and exercise.

CHURCHES

The community has a Catholic Church *St. Peter in Chains Church* and a Bible Church. They hold services every Sunday at 11:00. The bible church offers a summer vacation bible school and weekly bible study on Wednesdays. Each congregation is respectful of each other’s denomination and unites during shared funerals or religious ceremonies.

LOCAL SAWMILL

Timber represents another small industry in Ruby. There is a community saw mill which some residents use for constructing new homes. Ruby is looking more and more to wood fired boilers to assist in reducing their extremely high energy costs.



ECONOMY

LOCAL STORES AND BUSINESSES

The community has two local stores. The Ruby Commercial sells groceries, tobacco and liquor 10:00 to 5:00 pm. McCarty's Services a home based store, which is open in the evening and sells groceries, snacks, and tobacco (no alcohol).

Many of our local residents utilize their knowledge of traditional crafts to sell pieces to interested buyers. Many local residents utilize their knowledge of traditional beading, skin-sewing, and crafting to sell items upon request. A few of the prominent craftsmen in the community include:

- Wolfgang Hebel who sells carved antlers and fossil ivory
- George Albert sells birch dog sleds and snowshoes
- William McCarty Jr. sells finely crafted birch dog sleds.

Additionally many local residents expand their hobbies for an additional income. Ed Sarten, master gardener and certified nutritionist, sells organic produce, herbs, eggs, honey and tans furs for local trappers and skin sewers. A few residents sell/trade smoke dried fish and berries to local people. There are no restaurants or cafes in the community but it is common for local residents to cook foods, take orders and just sell directly to interested community members. Trapping is considered a subsistence activity for monetary income, clothing and food. There are up to 12 residents who trap marten and other furbearers mostly in the winter and early spring.



Ruby Commercial



McCarty's Services



George Albert making snowshoes

Near Ruby, there are at least five small (2-5 man operations) gold mining camps operating, with a majority off of Poorman Road. The gold industry in the community promises to be ongoing and possibly expanding with new prosperous finds every year. In 1998, the largest gold nugget ever found in Alaska was discovered in Ruby. In addition to gold mining endeavors, Ruby has one permanent construction contractor, heavy equipment operator, and well driller; Gary Kangas, who does a lot of work in the village and subcontracts in many of our local building projects.

Ecotourism is starting to grow interest among residents as a future local industry. The community already sees a few international tourists each year, who boat down the Yukon River. Tourists who experience Ruby have a history of returning and bringing many others to visit Ruby. These visitors contribute to our local economy. There are a variety of bed & breakfasts that have opened in the community as a result of the increasing number of visitors. The Wild Iris is owned and operated by Rachel Kangas, Rivers Edge by Clifford and Marie Cleaver, and The Empty Nest owned and run by Katie Kangas.

COMPOSITION OF EMPLOYMENT

According to the community survey completed in 2013, the top employer in the community was local government with 43 workers; trade, transportation and utilities ranked second, with 18 workers followed by construction at 13 workers. Mining, education, fuel sales and other jobs amount to less than 20% of the overall people employed in Ruby.

The last construction projects of the new health clinic and generator facility in 2013 helped increase income for the community. Future planned projects such as a new multipurpose building and home improvement grants are on the agenda for construction. State and Federal agencies such as U.S. Fish & Wildlife Service, BLM and other agencies temporarily employ residents firefighting state and nationwide. These positions include firebreaks & forestry contracts locally, fish & game surveying, and taking biological samples and other data.

Ruby Tribal Council posts jobs, trainings, education and other economic opportunities available locally and abroad and assists community members to be placed in those positions.

HOUSING

Based on 2010 U.S. Census information, Ruby has a total of 108 housing units. 62 of which are occupied (45 owned by the occupant & 17 rented) and 46 vacant (17 are used seasonally). The average number of occupants per household is 2.68. There are 37 family households and 25 non-family households (State of Alaska Community Database).

Prefabricated homes are built in Ruby by the Interior Regional Housing Authority (IRHA) which serves tribes in the Doyon Region. Ruby is on a five year funding schedule, which means that roughly every five years new homes are built. In 2012, IRHA completed roof rehabilitation and weatherization services on 60 homes in Ruby. The most recent HUD housing units (6 total) were also built by IRHA in 2006.



IRHA Weatherization Improvements on Ruby Home

There are 18 homes in the community that were built by their owners that are still currently being used. The construction of these homes is typically of local spruce timber. There are currently several small private home renovation and improvement projects underway in Ruby.

TRANSPORTATION

EXTERNAL TRANSPORTATION

Ruby is not located on the Alaska road system. The majority of our community members who travel into or out of Ruby utilize commercial airline services. Commercial air services are possible through our 4,000ft gravel airstrip, which is owned and operated by the State of Alaska. There is an airport facility that is used only to house a caterpillar grader and a cade loader, both of which are in good working order. The state utilizes this equipment to maintain the airstrip.

Most residents fly monthly or semi-annually into Fairbanks or Anchorage for shopping, medical appointments, meetings, special events, job related or just visiting. During the summer season, some people travel by boat and during the mid-winter months a few by snow-machine. Also during the summer months the community utilizes barge services out of Nenana. It is during that time that residents have vehicles, construction materials and other large scale items brought into the community.

In May 2013, the Alaska Department of Transportation (AKDOT) decided to stop providing basic summer maintenance to the 40-mile Poorman Road in Ruby. The road is a vital resource in ensuring the community members maintain subsistence activities in their region. It also provides necessary transportation to a number of mining claims. AKDOT cited that it costs the state roughly \$115,000 annually, by not clearing icy drifts or thawing culverts. Ruby was the only community in the Northern region to receive a funding cut. As a result the City of Ruby and Ruby Tribe have had numerous discussions with the State of Alaska Department of Transportation (DOT) on extending funding to maintain the 40 mile Poorman Road.



Ruby-McGrath Proposed Road. Photo Courtesy of the Yukon-Kuskokwim Delta Transportation Plan.
Page | 27

Despite the funding cut to Poorman Road there are discussions of utilizing the existing Poorman Road to create a road between Ruby and McGrath. The proposed road would provide intermodal connections between the Yukon and Kuskokwim River. Additionally it would give Ruby access to McGraths significantly larger hub airport which would increase the volume and quality of the transportation of goods from Fairbanks. Additionally the “Road to Nome” project includes the road to Tanana- which bypasses Ruby by a few miles north.

INTERNAL TRANSPORTATION

All of the roads in and around Ruby are maintained gravel roads. In 2008 the City of Ruby turned over the responsibility of maintaining local roads and trails over to the Ruby Tribal Council. After retaining the responsibility for roads and trails, Ruby Tribal Council began contracting directly with the Western Federal Highway Lands Administration (WFHLA). From 2008-2011 the Ruby Tribal Council successfully secured \$341,000 for planning, scoping, engineering, and the Environmental Impact Statement of several of its roads. They have also secured over \$1.27 million through BIA for road improvements. The Ruby city office manages the roads on city property.

Ruby has 14.4 miles of roads that are listed in their Long Range Transportation Plan accepted by the Bureau of Indian Affairs Road Inventory. In addition to this there is a 30 mile road to Poorman. Ruby currently contracts with Federal Highways to maintain their roads. The Tribe secured \$341,000 for a recently approved road to do Planning, Scoping, Engineering, and the Environmental Impact Statement. The City of Ruby turned over ownership of the local roads to the Ruby Tribal Council so that the RTC could include the roads into the BIA Road Inventory program. The Ruby Tribal Council was awarded 1.27 million from Bureau of Indian Affairs to construct a road to access natural resources important to the community.

The tribe completed an updated long range transportation plan which includes information on Ruby’s current road inventory. The road inventory covers future planning and maintenance for road construction. Identified in that plan was the need for a school bus system since the current setup is considered a hazardous route.

In 2010, Ruby Tribal Council purchased a water truck for a village dust control program. The Tribe is currently discussing using a palliative that would be applied to our roads occasionally as needed to decrease dust. We will be working with NRCS and Alaska Trails Committee in coordination with DOE to maintain and rebuild our off road trails for better travel and subsistence opportunities.

LAND USE AND ENVIRONMENT

LAND OWNERSHIP

The Dineega Native Corporation owns approximately 115,200 acres around the City of Ruby which the ANCSA 14(c) 3 conveyance agreement gave the amount of 880 acres to the City of Ruby most of which is privately owned. The nearby Nowitna Wildlife Refuge covers 2.1 million acres just east and upriver adjacent to Ruby. The refuge was established in 1980 through the Alaska National Interest Lands Conservation Act (ANILCA). There are numerous native allotments, BLM, and state land in Blocks surrounding Ruby. There is a limited amount of city and a few Native allotments available for sale. See appendices for detailed map of land ownership.

ENVIRONMENTAL CONCERNS

Climate change is beginning to negatively effect our community. The Yukon River is not frozen as long as it was, and travel is more limited because of dangerous conditions. Hunting season is warmer which seems to affect animal behavior relevant to subsistence activities, grassy ponds are losing more water every year and there were no berries in the summer of 2014 which people rely on. Unpredictable weather patterns increase situations for accidents and other consequences in daily living. We have seen insects, birds, and other flora and fauna that has never been seen in Ruby before. We don't know how much this will determine the future of our local environment and eco system.

Our public dump/landfill is full and overused and ready to be closed. Ruby's dump pollution problems began with the increased introduction of non-biodegradable products and toxic materials. Wild animals and birds eat from the waste and water runoff and is polluting the area. We have a recycling initiative with a back haul program but it needs to be improved and enforced as the pollution problem still persists with even more foreign, non-renewable materials and toxins brought in to the village. The bulk of the garbage problem includes construction materials, discarded appliances, disposable use design, and food and product packaging. Ruby does have a dump plan to be initiated, a new landfill site and a high temperature trash burn unit on the way this summer to eliminate part of the garbage. Construction of a new dump site is on the horizon.

SUBSISTENCE

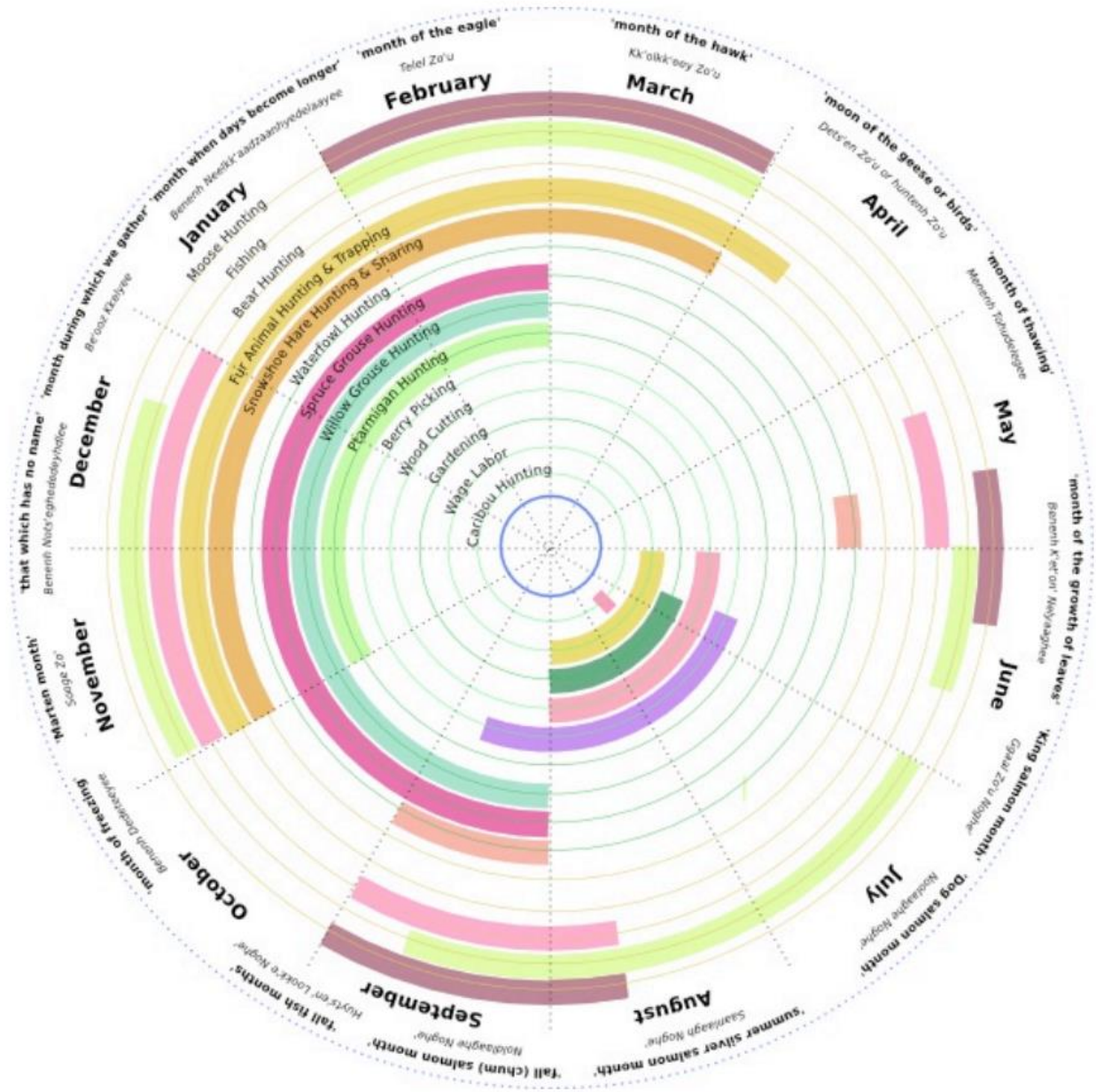
The harvest of subsistence foods is not what it once was before the 1950s, when people moved from camp to camp following the “cycle of life.” Seasonal subsistence activities are slowly being replaced by store bought foods. However, subsistence harvested food is still traditionally shared throughout the whole community which offsets the high price of food, encouraging healthy diet practices, offsets high costs of living, and gives a good foundation to traditional cultures. A subsistence harvest survey conducted in 2011 by the Alaska Fish & Game Department found that Ruby residents consumed:

- 32,075 lbs of edible salmon
- 4305 lbs non-salmon fish
- 1,040 lbs berries and greens
- 16,160 lbs moose bear and other mammals
- 505 lbs. birds
- 22 lbs outside hunted marine mammals

Boat hunting areas are on the Nowitna ,Yuki and Melozi Rivers and tributaries with the remainder of hunters using the 40 mile long Poorman Road with trucks and ATVs. Most of the berries are picked and grouse hunted on and near the road. Most of subsistence fishing is done with set nets on the Yukon River where we harvest Salmon and other species; fresh water fish such as grayling are caught in the Melozi River by fishing pole.

Changes in subsistence activities can be attributed to changing climates and increasing state regulations. More than 100 years ago caribou were much more abundant in this area and was the main ungulate harvested for subsistence food when moose were rare at the time, caribou are rarely seen now. The community used to participate in livestock herding, raising reindeer but the practice went away over time. Restricted fishing regulations and closures drastically limited a large percentage of subsistence fishing in our community. The same can be said with hunting regulations in the area. Hunting regulations are difficult to understand with antler cutting, timeframes, and specific use areas. Our local fish and game advisory committee submits proposals to all federal and state authorities to modify and change regulations in support of required subsistence harvest and maintaining high fish and wild life populations and cooperate with authorities.

In 2012, Cornell University MS Student, Nicole Wilson completed a case study on the history environmental and hydrological changes in Ruby. As a part of her research she conducted interviews with local residents. The following figure was created as a portion of her thesis. It shows the cycle of traditional activities as they relate to the time of year.



Wilson. Seasonal Round Diagram. Page 71

COMMUNITY PRIORITIES

GOAL: IMPROVE COMMUNITY WELL-BEING

Priority: Create More Community Activities

Action Item: Create a Variety of Group Exercise Clubs (i.e. Yoga, Meditation, Workouts, etc)

- Determine what activities are wanted by community members
- Use existing school gym (or parks during the summer months) to schedule meeting times
- Create a list of individuals who have skills necessary to conduct exercise events
- Partner with TCC Health to look into the feasibility of having their gym staff make a few visits to the community throughout the year

Action Item: Expand Community Services for Local Elders

- Determine what activities are wanted by elders
- Find funding for an Elder Meal Program
- Elder accessibility- railings and wheelchair ramps for public buildings
- Elder transportation- funding for snowmachines and four-wheelers to help transport elders to health clinic and airport for medical needs

Action Item: More Cultural and Language Activities

- Classes in the community on traditional craftmaking- i.e. fishwheel, snowshoes, martin hats, etc.
- Elder and youth mentorship events
- Summer culture camp

Priority: Create VPSO Position

Action Item: Obtain Necessary Housing and Facilities Needed To Support the Position

- Identify places that a VPSO can rent or vacant homes available for purchase
- Locate funding to construct a holding cell in the community

Action Item: Work With TCC VPSO Program to Determine Further Requirements

Priority: More Flowers around the Community¹

Action Item: Obtain Funding to Purchase Flower Seed Packets for the Community

- Look into existing funds and grants available to purchase seed packets
- Fundraising with youth in the community to raise money for seed packets
- Purchase low maintenance perennial flowers

¹ Goal was created through discussions with all 37 Ruby youth during school hours August 2014.

Priority: Improve Emergency Response²

Action Item: Create Search and Rescue Response Team

Through the community planning process individuals in the community were identified as having skills and equipment necessary to start a search and rescue team.

- Contact individuals to set up regular meetings to establish a community wide response plan
- Educate residents on existing emergency response plan

Action Item: Obtain Training for Ambulance Driver

- Look for existing trainings in the Fairbanks and Anchorage areas
- Work with TCC Employment and Training Program to help assist with funding for local residents to attend training

Priority: Provide Alternative Nutritional Options for Residents

Local resident, Dwight “Ed” Sarten, is a Master Gardener in our community with alternative healthcare training and knowledge. During the planning process, he volunteered his time and knowledge to educating and promoting healthy living to our community.

Action Item: Encourage More Gardeners in the Community

- Work with TCC Cooperative Extension Agriculture Program to provide workshops in the community
- Collaborate with other local gardeners to create a list of necessary existing items for gardening in our community
- Identify and seek funding to provide community members with tools necessary to start their own gardens

Action Item: Educate Residents and Promote Smart Nutritional Choices

- Continue to work with the Inter-Tribal Bison Cooperative to determine the feasibility of starting a bison farm in the community
- Collaborate with local stores to determine healthy food items that can be sold in the community
- Work with TCC Cooperative Extension Agriculture Program to provide workshops on how to store and process subsistence and garden items

² Goal was determined by adult and youth responses

GOAL: IMPROVE COMMUNITY INFRASTRUCTURE

Priority: Improve Community Utilities³

Action Item: Need of Public Restroom Near Ruby Commercial Store⁴

There are currently no public restroom facilities in the main downtown area of Ruby. Many of the visitors and residents employed in buildings downtown have to either return home to use the restrooms or ask to use private resident facilities.

- Determine what public buildings are near and around the main downtown area that would be feasible to support a public restroom area
- Look into the feasibility of building and maintaining a separate restroom facility that can be used year-round

Action Item: Need to Improve the Quality of Water At The Washeteria

The quality of water at the washeteria needs to be regularly checked to ensure that proper levels are managed. There is also an issue of water leaking around the self-haul area- which has proven to cause many accidents for residents, especially when it ices over during the winter months.

- Issue a Request for Proposal for an estimate on the cost of repairs
- Contract with local tradesman or construction company to fix the leaking water hazard
- Provide more training for washeteria maintenance position
- Look into alternative filtration systems for washeteria

Action Item: Seek Alternative Energy Sources for More Sustainable Energy for the Community

The current PCE program rates as described on page 17 can only be applied to residential homes that use less than 500 kWh per month. Additional energy sources and smart energy usage in our residential homes can help to further reduce the cost of energy in our community. There are also issues with the current power plant in the community where power outages are frequent those issues are currently being addressed with proper system maintenance.

- Community workshops on smart energy choices in residential homes

³ Goal was determined by adult and youth responses

⁴ Goal was created through discussions with all 37 Ruby youth during school hours August 2014.

Priority: Maintain Quality Roads in and Around the Community

Action Item: Ensure that Poorman Road is Continually Maintained

The road is used by local residents who have mining interests off of Poorman Road. It is also utilized by the residents for access to traditional subsistence trapping and hunting areas. There have been discussions in recent years to extend the existing Poorman Road so that it connects with McGrath.

- Continue discussions with AK-DOT officials and continue to advocate the importance of the road
- Get written testimonials from community members and mining operations to support advocacy work

Action Item: Encourage Active Community Discussions Surrounding the Road to McGrath And the Road to Nome Efforts

During the 2014 community plan surveying, 80 community members were asked their opinion of the road to McGrath and road to Nome efforts. Those results revealed that the community was equally split in support/opposition to the construction of the roads. More in-depth discussions need to take place with residents so they are fully aware of how either road construction may impact our community.

Action Item: Improve Drainage and Culverts in the Community to Ensure that Roads Can Still Be Utilized During Wet And Rainy Seasons.

- Partner with the Alaska Tribal Technical Assistance Program to Complete a Transportation Safety Plan outlining transportation safety goals
- Use plan to acquire grant funding to improve trail

Action Item: Improve the Trail to the Cemetery

- Partner with the Alaska Tribal Technical Assistance Program to Complete a Transportation Safety Plan outlining transportation safety goals
- Use plan to acquire grant funding to improve trail

Action Item: Improve Street Signs around the Community

- Partner with the Alaska Tribal Technical Assistance Program to Complete a Transportation Safety Plan outlining transportation safety goals
- Use plan to acquire grant funding to improve trail

Action Item: Improve Street Lighting throughout the Community

- Create a long range transportation plan
- Use plan to acquire grant funding to improve street lights

Priority: Construct a New Community Hall/Multipurpose Building

The community hall is used year-round to host a number of community events and traditional gatherings. The current log structure was built in the 1970's and is falling into disrepair. The facility also does not have a restroom for public use during the events. The Ruby Tribal Council, as of 2015, is currently seeking funding to construct a new Community Hall and Multipurpose Building.

- Request for Proposal- on estimated cost of designing and constructing the multipurpose facility
- Look into feasibility of an attached garage for community use to support residents fixing their snowmachines and trucks during the winter months
- Look for funding for the project

Priority: Improve Community Safety by Addressing the Old Homes and Buildings Scattered around the Community

Action Item: Contact Home Owners to Determine Their Intentions of the Buildings

- Create a list of homes that are not being used because of poor condition
- Use existing land allotment surveying map to determine ownerships of the individual plots

Action Item: Assist Individuals in Rehabilitating or Tearing Down Old Buildings

- Look into feasibility of using Brownfield assessment and funding to help with equipment rentals necessary to remove hazardous structures
- Organize volunteers and community members to help with the cleanup

Action Item: Demolish Old Community Sawmill

- Purchase a new portable community sawmill

Priority: Meet Community Housing Needs

Action Item: Improve Existing Homes

- Coordinate with UAF Cold Climate Housing Research Center to provide community workshops
- Coordinate with Regional Housing Provider And Alaska Housing Finance Corporation to provide home maintenance workshops in the community

Action Item: Build Additional Homes to Meet the Growing Needs of the Community

- Coordinate with HUD to construct homes for low income residents
- Coordinate with Alaska Housing Finance Corporation and Interior Regional Housing Authority to provide information for residents interested in home loans to construct their own housing units

Priority: Improve Recreational Facilities for Youth

All 37 Ruby youth were surveyed in August 2014 to determine what they felt could improve the community. The following actions items were created from those discussions.

Action Item: Create an Outdoor Ice Skating Rink

- Local area that can be utilized for the rink (i.e. clearing a portion of the river, or constructing one near the school)
- Research tools needed for building a rink & upkeep of equipment
- Seek local donations for tools, volunteer time, and equipment needed for construction
- Local fundraising efforts to purchase additional tools
- Identify which parties will be involved with maintaining the rink and equipment
- Look for a short term small grant to help purchase ice skates (for rentals) for local youth

Action Item: Repair Existing Outdoor Basketball Court

- Identify potential funders for the project
- Look into the feasibility of using youth volunteers to help with the construction and getting UAF credit for construction

Action Item: Expand School Garden

- Seek for additional funding to better establish a community garden

Action Item: Have a Small Cafe in the Community

- Identify existing bed & breakfasts or stores that would be willing to expand their services to offer a café for the community

GOAL 3: ENCOURAGE COMMUNITY-DRIVEN ECONOMIC DEVELOPMENT

Priority: Create and Promote Local Job Opportunities

Action Item: Provide Child Care in the Community

- Due to the increase of youth in our community, we would like to provide additional services to support local parents. Many of our residents have expressed the need for childcare, in order to return to work.
- Identify existing homes or residents that would like to provide daycare services
- Identify the number of residents that are interested in daycare options
- Assist residents with opening a daycare
- Look into the feasibility of building a daycare facility in the community

Priority 2: Increase the Number of Residents Seeking Higher Educational Goals

Action Item: Partner with Interior Aleutians Campus and Tanana Chiefs Conference to Host Community Trainings and Courses Based on Community Interest

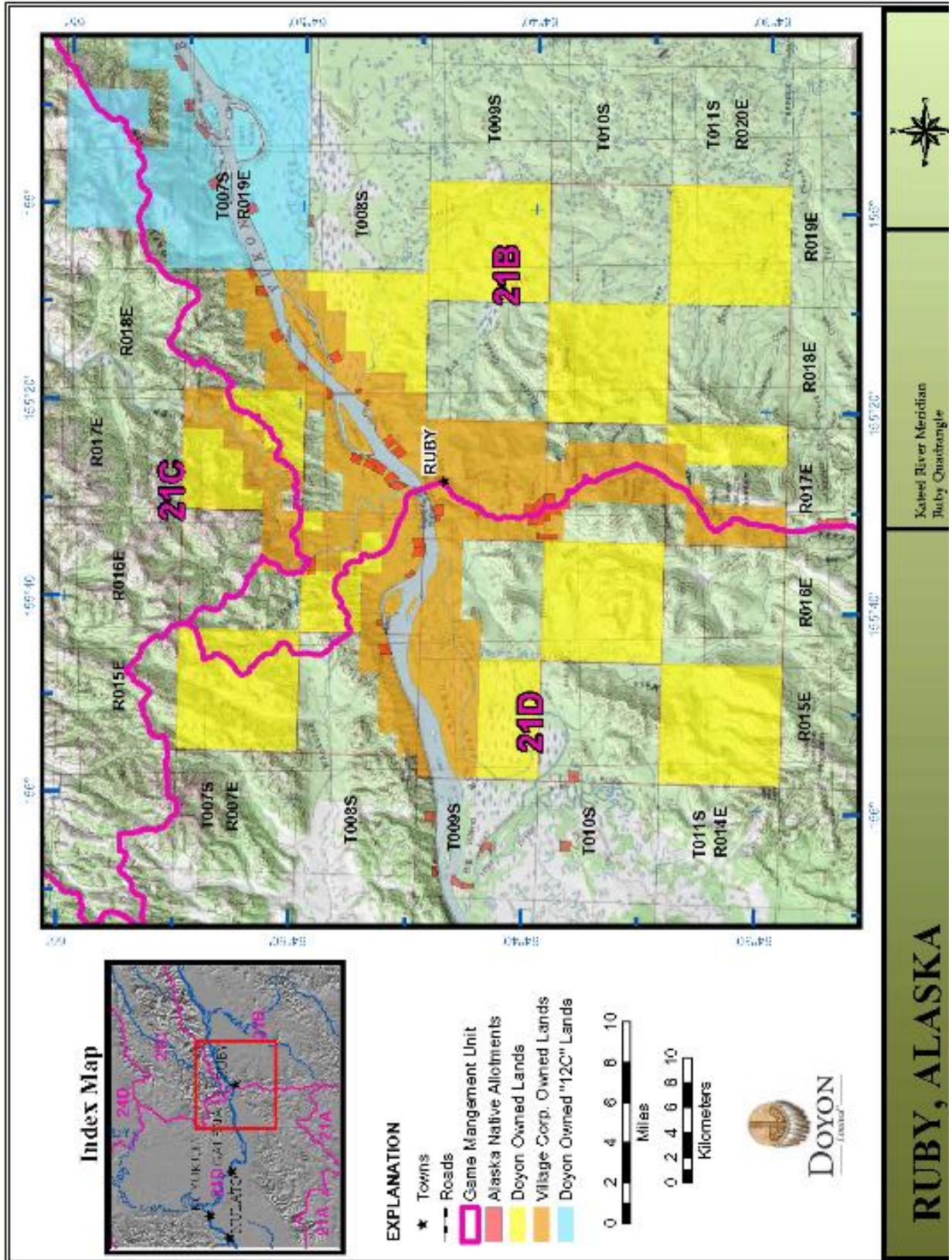
- Identify what trainings are available
- Circulate a sign up list for trainings, once a large enough group number is reached- contact IAC and TCC about offering training in the community

Action Item: Work with the Yukon Koyukuk School District to Find Programs that Help Encourage Youth to Attend College

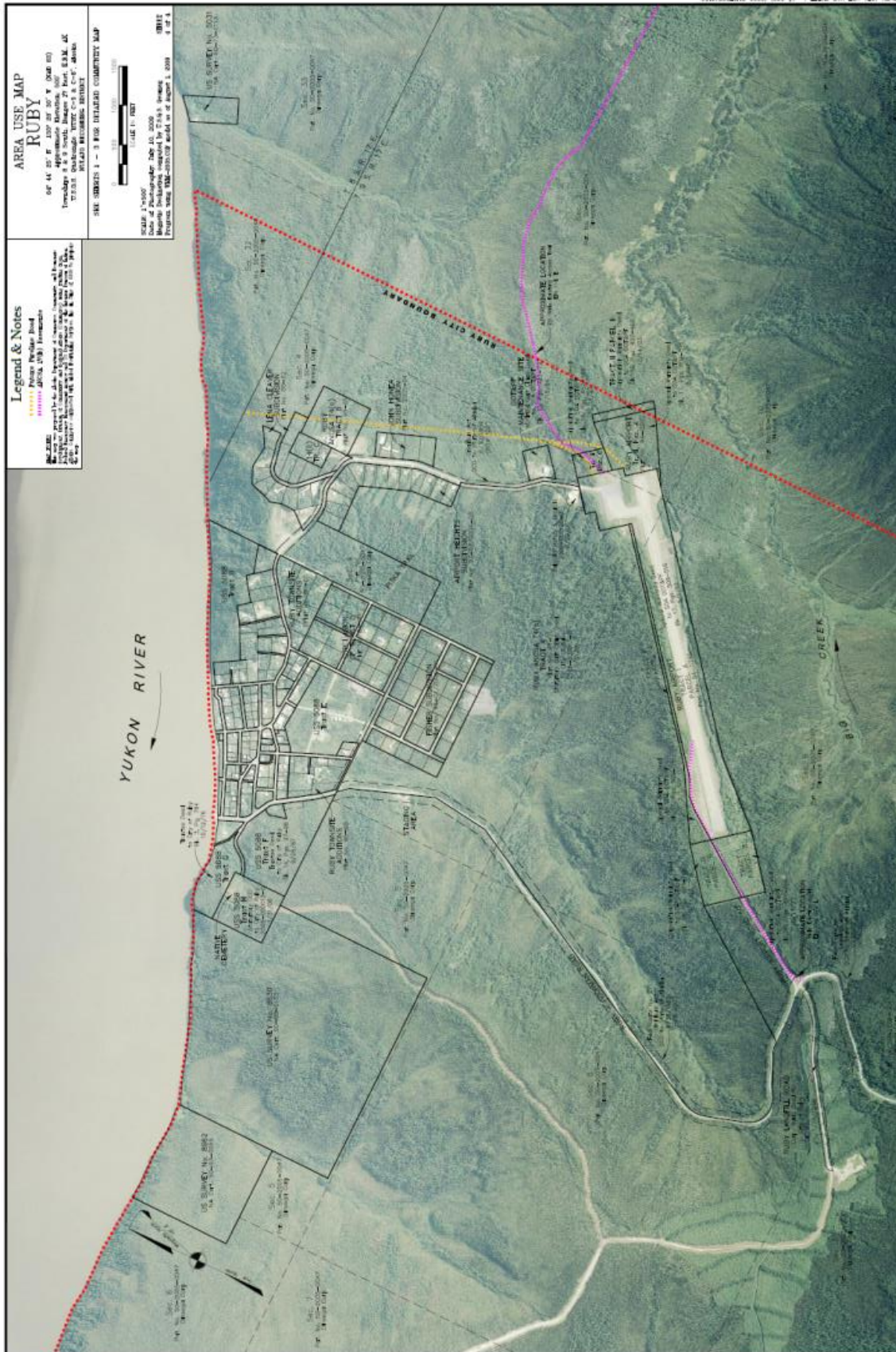
- Identify what programs are available and which are successful
- Target teens and youth to become involved programs

APPENDICES

Land Ownership Map



Ruby Ariel Map- 2009



2014 Community Survey

How satisfied are you with the current public water system? Why or why not?

How satisfied are you with the electrical system in the community? What can be done to make it better?

How satisfied are you with your current housing situation and would you be interested in a home maintenance workshop ? Should we use research from cold climate housing research from UAF in planning new construction?

What do you currently do for child care? Do have additional needs beyond your current child care? Would interested in seeing a child care center for Ruby?

How satisfied are you with our emergency response situation and what are your suggestions? Would you be willing to donate your time or equipment times of emergency? If yes, what do you have available?

Are you interested in starting a business? If yes, what would be the focus, what would you offer, what type of assistance would you need in starting that up?

Are you satisfied with local job opportunities? Are you aware of current openings? What types of training/degrees would you be interested in getting to increase your job opportunities?

Would you like to see a road to McGrath or the Yukon River Access?

How does the Poorman road not being on the DOT list impact you?

What subsistence activities do your participate in? Berry picking, harvest of fish and game? what percentage of your food comes from subsistence ? Are you interested in other subsistence activities- example a bison farm?

Kids: What do you think can be done to make Ruby a better place to live?

Ruby Survey Results Continued....

Are you satisfied with local job opportunities? Are you aware of current openings? What types of training/degrees would you be interested in getting to increase your job opportunities?

not satisfied ~~|||||~~ ~~|||||~~ ~~|||||~~ ~~|||||~~ ~~|||||~~

Satisfied ~~|||||~~ ~~|||||~~ ~~|||||~~ ~~|||||~~ ~~|||||~~

grants - Hazmat - more jobs - Vocational studies - Construction, fire fighting training equality
 Would you like to see a road to McGrath or the Yukon River Access? Why or why not? elders

RS → road to McGrath	 	
→ road to Yukon Nome - Fairbanks	 	NO →

How does the Poorman's road not being on the DOT list impact you?

1. Want Poorman road fixed - ~~|||||~~ ~~|||||~~ ~~|||||~~ ~~|||||~~ ~~|||||~~

Where is existing rd money available?

What subsistence activities do you participate in? Berry picking, harvest of fish and game? what percentage of your food comes from subsistence? Are you interested in other subsistence activities- example a bison farm?

Subsistence all activities - ~~|||||~~ ~~|||||~~ ~~|||||~~ ~~|||||~~ ~~|||||~~

Some activities - ~~|||||~~ ~~|||||~~ ~~|||||~~ ~~|||||~~ ~~|||||~~

garden - agriculture ~~|||||~~ ~~|||||~~ ~~|||||~~ ~~|||||~~ ~~|||||~~

Kids: What do you think can be done to make Ruby a better place to live?

Comp - Indian dancing + culture + culinary class, Home economics shop - Adult respons

Flowers, ice skating, fix basketball court, fix road cuts in Spring - erosion
 play ground by teen center, better water source, swimming pool/kids table.
 Improve teen center with bathroom, cate library, insulate bible church.
 Sauna, more better food at store, animals, bathroom + water near store. Kids

Ruby Vision Planning Results → 11/17/14

11/15/14
+ meeting

- ① VPSO - Search & rescue
Alcohol? Fire truck - Ambulance driver - training
Emergency Mgmt. Plan implementation
- ② Improve Water System
alternative filtration - ultraviolet - wells
Central Village bathroom
- ③ Road improvements - potholes
Culverts - drainage - fix runway
Street Bumps
Traffic improvement (see above)
- ④ Reuse - rehabilitate or tear down
old buildings - determine new uses
- ⑤ HUD Housing - self help building
local housing - Grants
- ⑥ Employment - Training opportunities
Co-ops - Industries - free attendance
- ⑦ Childcare - facilities?
- ⑧ Portable Community Sawmill
demolish old Mill

- ⑨ Subsistence, Natural Cultural
and agriculture resource Mgmt.
and development - training - Camp,
Fish wheels, bins, reinder, gardening
- ⑩ Alternative Health Care Native
Medicine Diet Counseling, Herology
Health Club - Gym - yoga - Exercises
Meditation, local Counselor
- ⑪ Tourism Study & development
Natural resource Cultural Codes
- ⑫ Alternative energy - biomass -
Solar wind hydro power -
green building environment planning
Construction - buildings development
- ⑬ Teen Center playground - park
development - basketball court
improvements - library - use
- ⑭ Elder Programs activities -
Meals - Care - Programs

Present Were: Katie Kangors, Billy McCarty Jr., Scotty Starr, Elisa Rhoker,
Dawn Greenway, Don Honear Jr., Shaeline Nicolini, Ed Sartan, Joe Peters, Annie Hanea

Ruby Visioning Meeting Notes Continued

- ⑨ Subsistence, Natural Cultural and Agriculture resource Mgmt and development - training - Carp, fish wheels, bio, re, indoor gardening.
- ⑩ Alternative Health Care Native Medicine Diet Counseling, Herbolagy Study - Health Club - Gym - yoga - Exercises Meditation, local Counselor
- ⑪ Tourism Study & development Natural resource & Cultural Codes
- ⑫ Alternative energy - biomass - Solar Wind hydro power - Wires Lights green building environmental planning Construction - buildings development
- ⑬ Teen Center playground - park development - basketball court - improvements - library - use
- ⑭ Elder Programs activities - Meals - Care - Programs
- ⑮ Community Hall - Multi Purpose building & Garage
- ① VPSO - Search & rescue
Fire truck - Ambulance driver - training
Emergency Mgmt, Plan implementation
- ② Improve Water System
alternative filtration - ultra violet wells
Central Village bathroom
- ③ Road improvements - potholes
culverts - drainage - fix runway
trails improve ~~ment~~ ~~cent~~ ~~er~~ ~~ty~~ ~~ro~~ ~~ad~~
Street Signs
Bumps
- ④ Reuse - rehabilitate or tear down
old buildings - determine new uses
- ⑤ HUD Housing - self help building
local housing Grants
- ⑥ Employment - Training opportunities
College Industries ~~free~~ ~~fit~~ ~~and~~ ~~is~~ ~~ag~~
- ⑦ Child Care - facilities?
- ⑧ Portable Community Sawmill
demolish old mill

Draft Goals Created in 2011

Goal 1: Transportation: Ruby's governing institutions provide transportation services to their community.

Objective1: Establish a road to the Ruby Slough gravel resource.

Action Plan

- Work through the Ruby Tribal Council Indian Reservation Roads program to elevate this desire to federal and state agencies.
- Complete Planning Specifications and Estimates (PSE) with the FLHWA.
- Seek additional partners to generate funding.
- Complete design and surveys.
- Developing construction strategy.

Objective 2: Replace City equipment that includes a 12 foot width grader, dump truck, loader, dozer, and water truck.

Action Plan

- Work with the RTC IRR program to assist in developing proposals.
- Create a Capital Improvement Proposal.
- Submit CIP to both of our Alaska State Legislators – Honorable Senator Albert Kookesh and Honorable Representative Alan S. Dick requesting that they include the City of Ruby CIP in the legislative budget.

Objective 3: Establish public signage for street names on the corner section of local routes, and stop or yield postage at intersections and places of traffic warning.

Action Plan

- Work with the RTC IRR program to assist in developing proposals.
- Create a Capital Improvement Proposal.
- Submit CIP to both of our Alaska State Legislators – Honorable Senator Albert Kookesh and Honorable Representative Alan S. Dick requesting that they include the City of Ruby CIP in the legislative budget.

Objectives 4: Create a strategy to address the lack of street drainage within our community. The number one need is to put in culverts in driveways where the driveway connects to the road.

Action Plan

- Work with the Ruby Tribal Council IRR program to develop proposals for this community need.
- Develop a CIP to the Alaska State Legislature for design and engineering funding.

Objectives 5: Construct Airport Improvements through the State of Alaska Department of Transportation and Public Facilities (ADOT&PF) that includes lengthening the airport runway, removing the dip in the middle of the airport runway, new runway lighting, and other detail common to airport upgrades.

Action Plan

- Develop a working relationship with the Alaska Department of Transportation to put the Ruby Airport improvements and upgrade need into the State Transportation Improvement Plan.

Goal 2: Health: Ruby's governing institutions provides health care to their community beneficiaries.

Objective 1: Provide a better health care facility in Ruby.

Action Plan

- Work with the City consultants.
- Enlist the aid of Alaska Native Health Consortia for a new clinic and housing for an itinerant study
- Work with the City and Tribal consultants to develop an approach strategy.

Objective 2: Seek Design funding to house vital community equipment such as Fire Tender, Nursery Tender, and Ambulance.

Action Plan

- Research different funding.
- Partner up with other entities in Ruby to combine funds together.

Objectives 3: Promote community awareness of substance abuse and need for mental health services.

Action Plan

- Solicit partnerships to develop healthy alternatives to drinking, tobacco and drug abuse common to our community.
- Work with kids in establishing sports as an alternative activities.
- Solicit RTC assistance in working with the Galena Mental Health Program to initiate village based services.
- Develop a long range strategy to address the shortage of office space for the mental health program at Ruby.

Goal 3: Housing: Ruby's governing institutions provides services that address the housing needs of the community.

Objectives 1: Rewrite Ruby's Five Year Indian Housing Plan.

Action Plan

- Develop survey of housing needs
- Develop strategy for providing running water and sewer services of the homes of Elders and village residents.
- Develop Housing Rehab strategy with IRHA

Goal 4: Education: Ruby's governing institutions works towards educating and improving the well-being of their community.

Objectives 1: Develop a fully equipped playground at the Merrelaine A. Kangas School.

Action Plan

- Develop a working relationship with the Ruby MOU Committee to solicit support.
- Partnership with Ruby's Entities to seek alternative energy technology for the MAK school building.

Goal 5: Economic Development: Ruby's businesses and institutions desire to develop economic growth in their community.

Objectives 1: Promote the establishment of a 501 (c) 3 non-profit corporation to function as a historical society to initiate the preservation of the history of Ruby.

Action Plan

- Solicit citizens and business discussion and support to implement.
- Designate someone to take the lead role to organize discussion and meetings.
- Apply for funding to create the infrastructure development needed to sustain the undertaking of tourism that includes training and subject matter for business development and public planning.

Objectives 2: Build a Multipurpose building to house the major businesses around town.

Action Plan

- Partner with Ruby City, Health Clinic, Mental Health, and Ruby Tribal Council.
- Research and Secure funding to do design, and estimate cost of construction.
- Research best location for the building.

Goal 6: Environmental: Ruby's governing institutions provide a safe environment to live in.

Objectives 1: Develop a solid waste management plan for the community.

Action Plan

- Work with the RTC Environmental Indian General Assistance Program.

Objectives 2: Build new landfill and road to landfill.

Action Plan

- Write in the IGAP program to research funding for the planning, scoping, and estimates on the design of a new landfill in Ruby.
- Work with Dineega and Ruby City to develop a landfill strategy.
- Include the landfill and land fill road into the IRR inventory.

REFERENCES

Alaska Department of Commerce, C. a. (n.d.). *Alaska Community Database Community Information Summaries*. Retrieved June 1, 2010, from Division of Community & Regional Affairs: <http://www.commerce.state.ak.us/dca/commdb/CIS.cfm>

Alaska Division of Fish & Game. (2010). *Harvest by Community*. Retrieved October, 2014, from Community Subsistence Information System: <http://www.subsistence.adfg.state.ak.us/CSIS/index.cfm/FA/harvInfo.harvestCommSelYear>

Denali Commission. (2010). *Distressed Community Criteria 2010 Update*. Anchorage: Denali Commission.

Energy: Ruby Hydrokinetic Turbine. (2008). Retrieved August 10, 2010, from Yukon Intertribal Watershed Council: <http://www.yritwc.org/Departments/Energy/tabid/79/Default.aspx>

McBride, R. (2009, June 2). Ruby Testign Innovative Solutions to Energy Needs. *Alaska's News Source* .

Nowitna National Wildlife Refuge. (n.d.). Retrieved August 10, 2010, from State Parks: <http://www.stateparks.com/nowitna.html>

Sherwood ,M.B., Alaska and its History,1967. Shiinkwin,A.D. 1976 A review of Anthropological Data in Central, Alaska .Symposium on the Archeological Visibility of Athabascan Culture

State of Alaska. (2001). *Ruby's Master Plan*. Ruby.

Tanana Chiefs Conference Planning & Development Program. (2004). *Ruby Community Economic Development Strategies*. Fairbanks: Tanana Chiefs Conference.

TCC with Hughes Tribal & City Council. (2006). *Hughes Ten-Year Community Plan*. Hughes: Tanana Chiefs Conference in Cooperation with Hughes' Community.

Wilson, Nicole. *The Human Ecology of the Koyukon Athabascan, People of Ruby Village, Alaska*. Print. 2012

Yukon-Kuskokwim Delta Transportation Plan. An Element of the Alaska Statewide Transportation Plan. March 2002. Print. Pages 23-24

Yukon Intertribal Watershed Council. (2009). *Ruby Hydrokinetic Energy Genretion Project*. Ruby: Alaska Energy Authority.

Wilson, Nicole. Human Ecological dimensions of change in the Yukon River Basin: A Case Study of the Koyukon Athabascan Village of Ruby, AK. Seasonal round diagram. Cornell University. MS Thesis. Print. 2012 Page 71

RESOLUTION



RUBY TRIBAL COUNCIL

AGNES M. WRIGHT BLDG.
P.O. Box 68210
RUBY, ALASKA 99768

TELEPHONE: 907-468-4479
FAX: 907-468-4474

Resolution 2015 -14

Adopting Community Plan

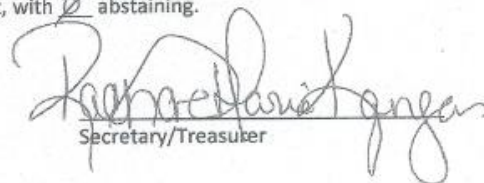
- WHEREAS,** this Community Plan is important to the future growth and development of Ruby; and
- WHEREAS,** this plan was created through a public process which captured the values and goals of our community; and
- WHEREAS,** this plan is a tool that helps us manage change in our community; and
- WHEREAS,** this plan is intended to coordinate future community development and service delivery; and
- WHEREAS,** we ask all public, private, and non-profit entities serving our community to recognize and use this plan; and

NOW THEREFORE BE IT RESOLVED, that the parties of this resolution agree to work together to pursue the values, goals, and vision express in this plan.

CERTIFICATION

This certifies that the above resolution was duly adopted at a convened meeting of the Ruby Tribal Council on May 1, 2015 by a vote of 4 for, 0 against, with 0 abstaining.


Chief


Secretary/Treasurer